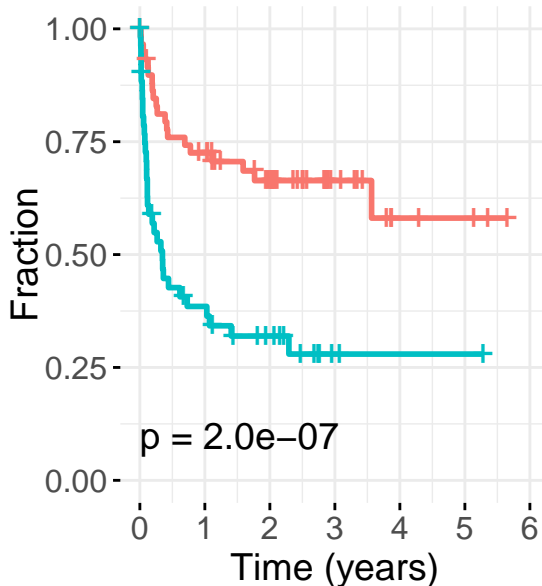


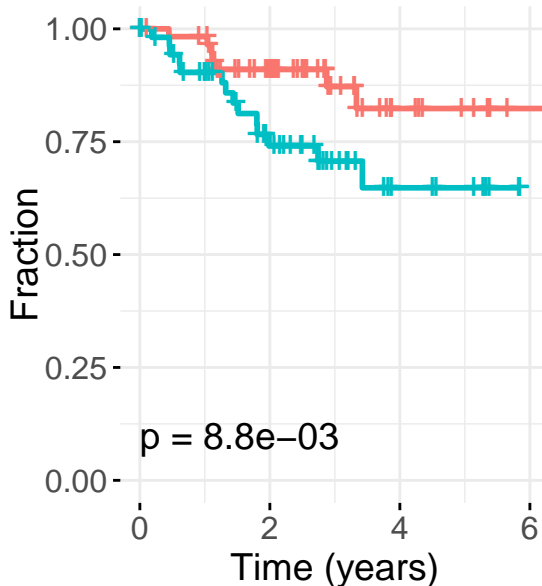
ONO-4059~ TTT

Strata high low



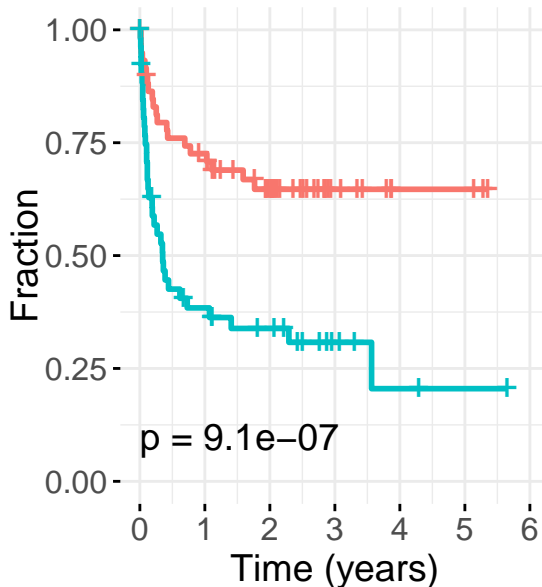
ONO-4059~ OS

Strata high low



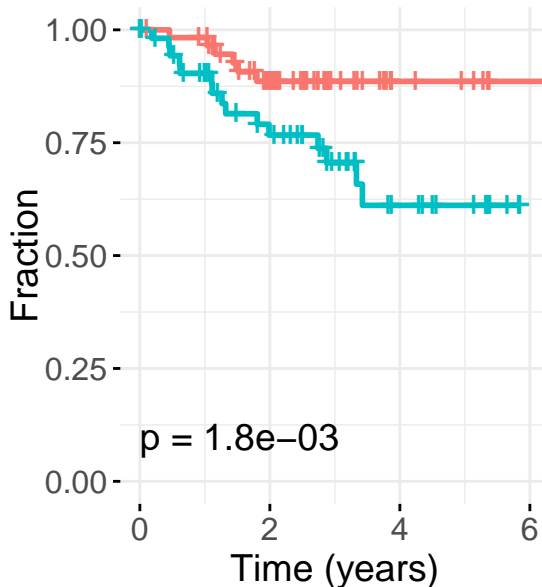
PRT062607~ TTT

Strata high low



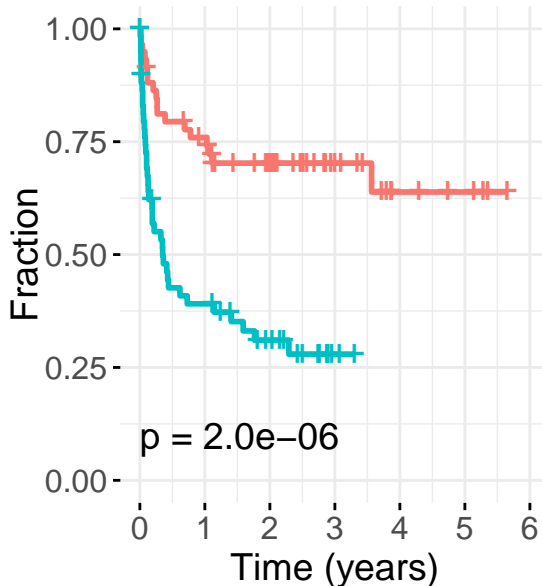
PRT062607~ OS

Strata high low



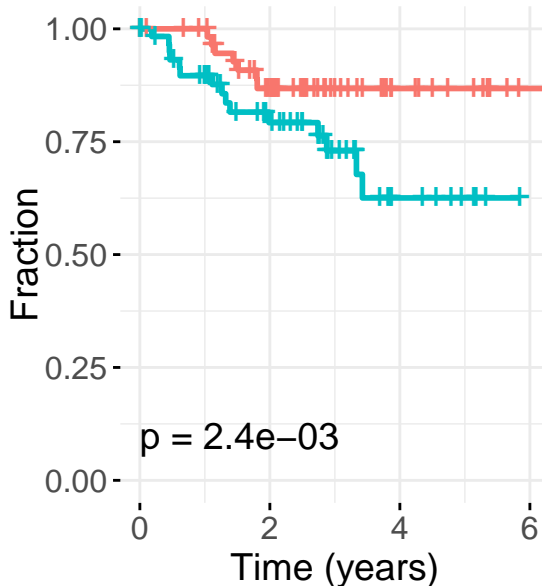
SGI-1776~ TTT

Strata high low



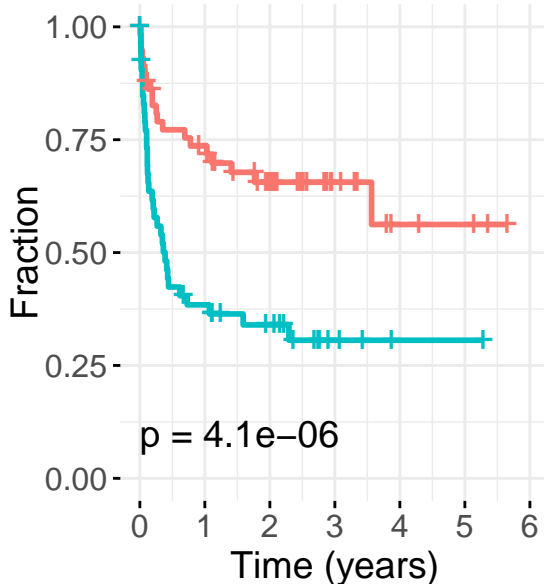
SGI-1776~ OS

Strata high low



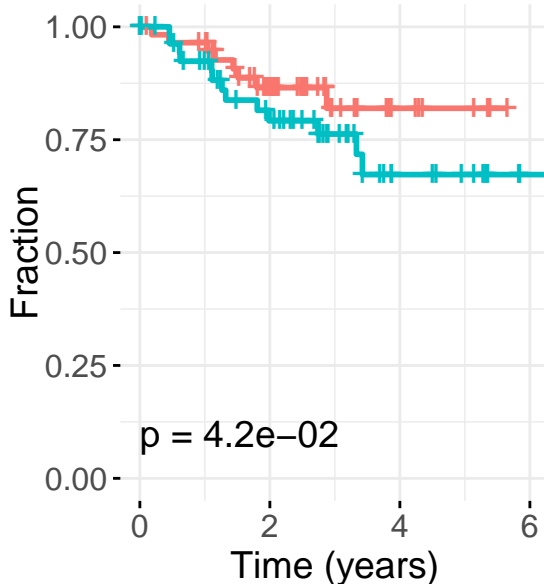
Cobimetinib~ TTT

Strata + high + low



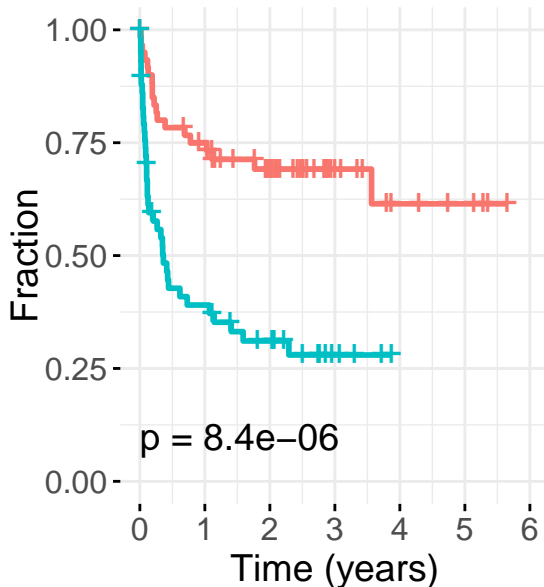
Cobimetinib~ OS

Strata + high + low



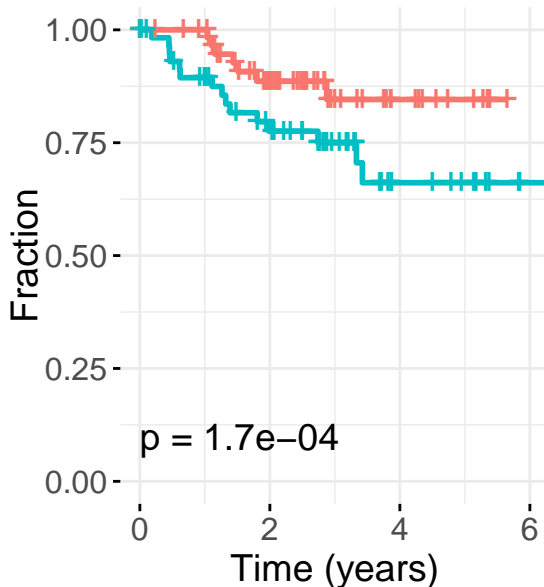
AZD7762~ TTT

Strata + high + low



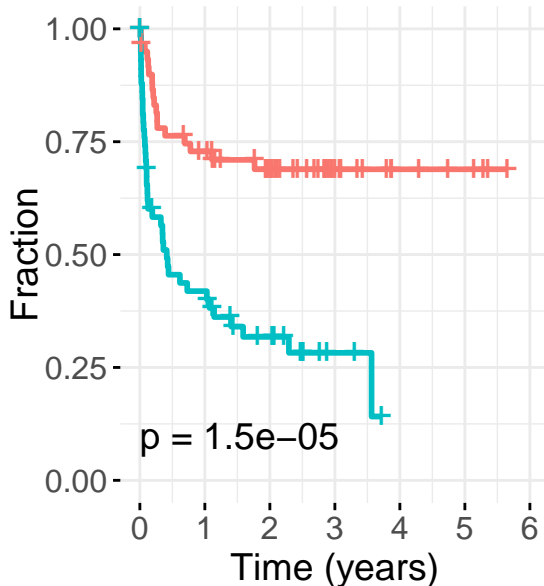
AZD7762~ OS

Strata + high + low



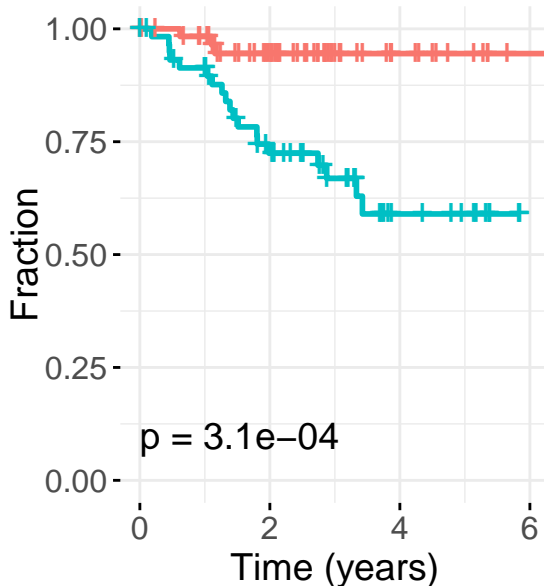
MK-1775~ TTT

Strata + high + low



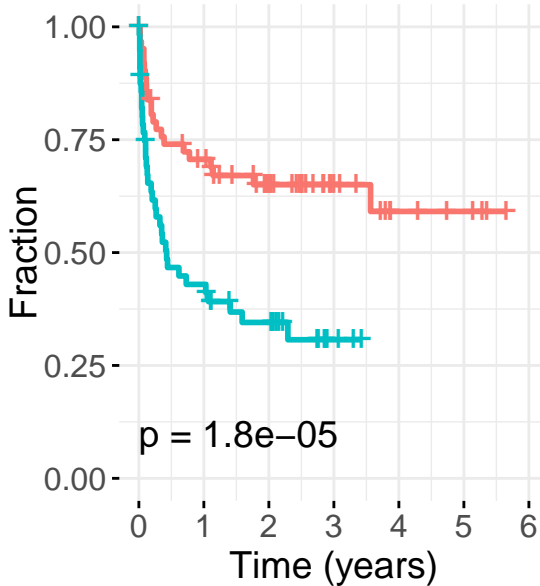
MK-1775~ OS

Strata + high + low



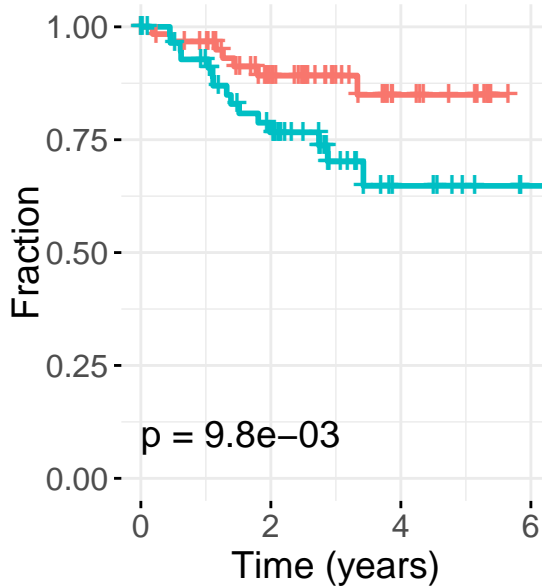
MK-8776~ TTT

Strata + high + low



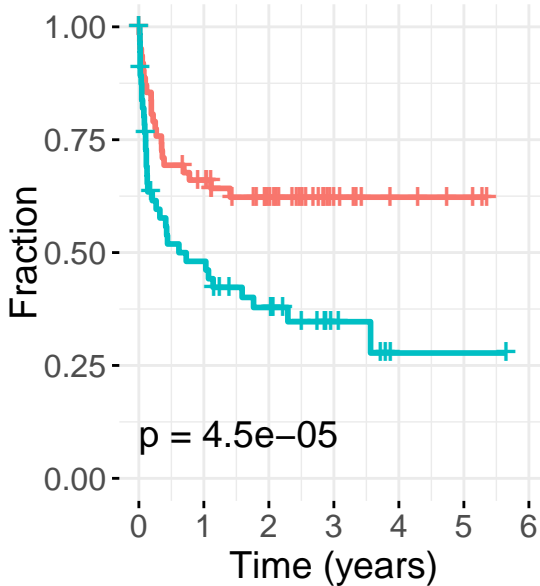
MK-8776~ OS

Strata + high + low



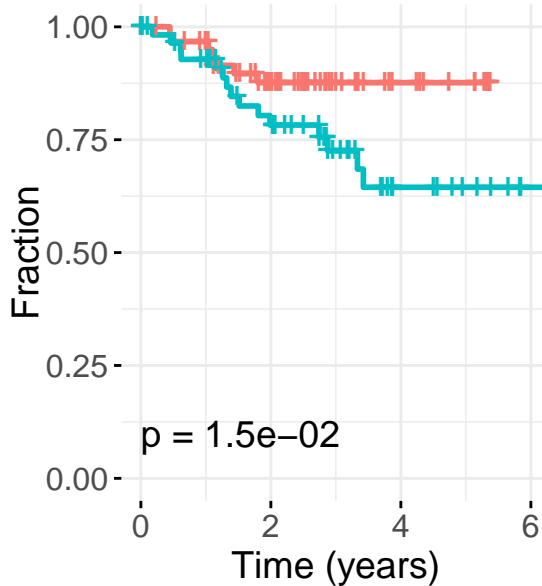
Sunitinib~ TTT

Strata + high + low



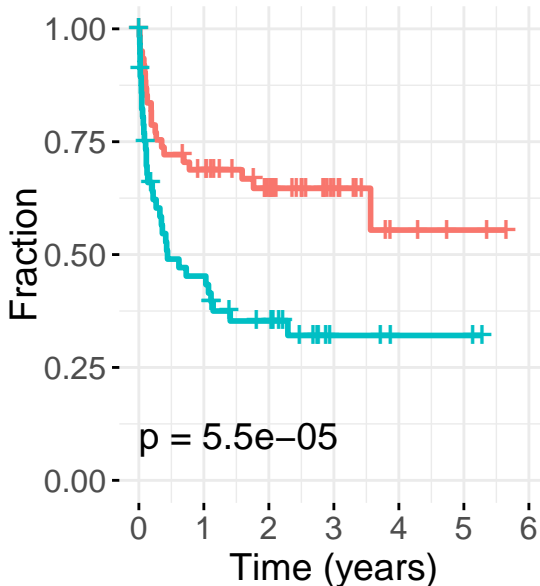
Sunitinib~ OS

Strata + high + low



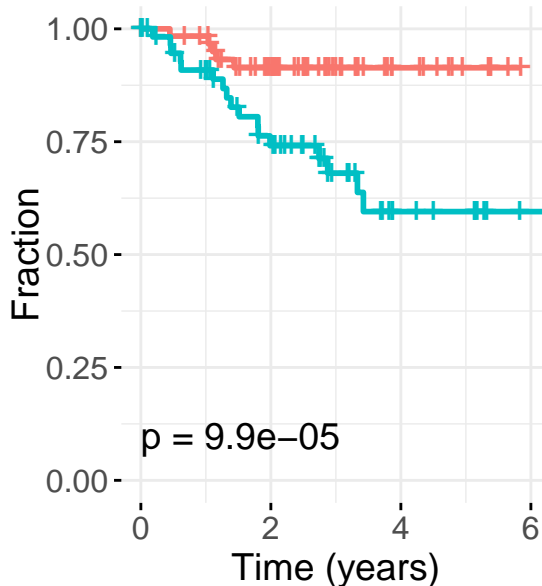
Ponatinib~ TTT

Strata + high + low



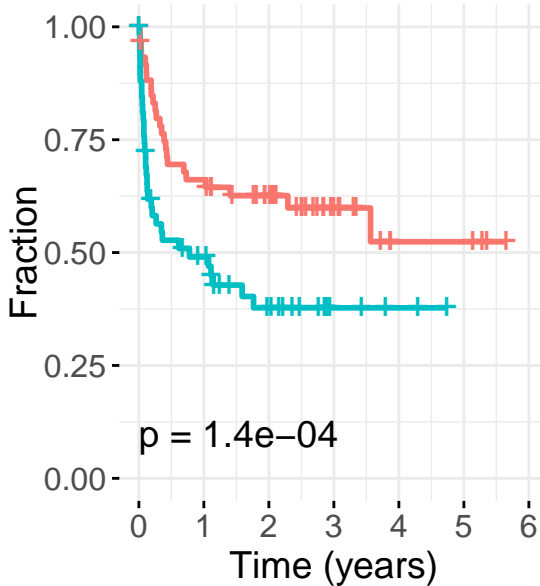
Ponatinib~ OS

Strata + high + low



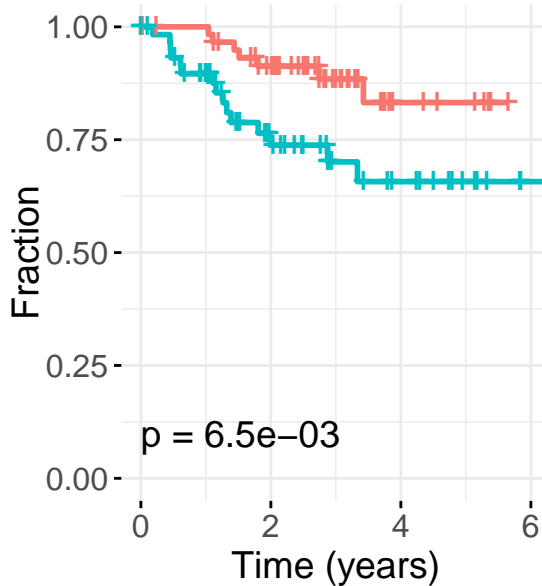
Vandetanib~ TTT

Strata + high + low



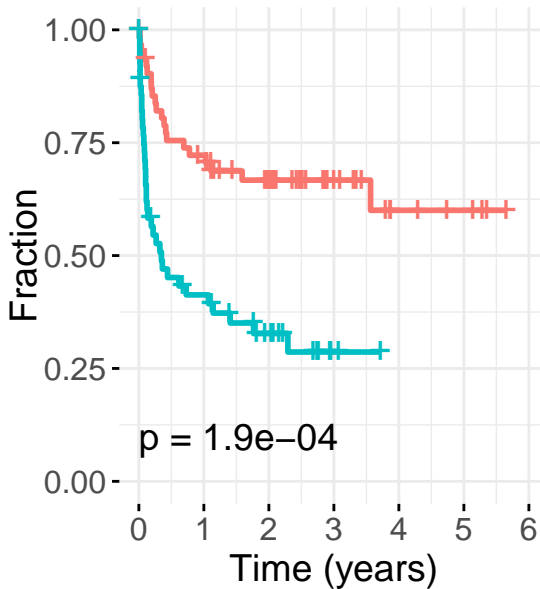
Vandetanib~ OS

Strata + high + low



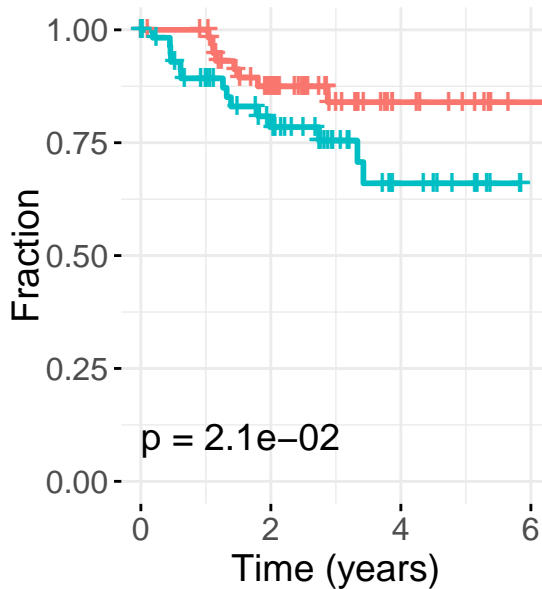
Ibrutinib~ TTT

Strata + high + low



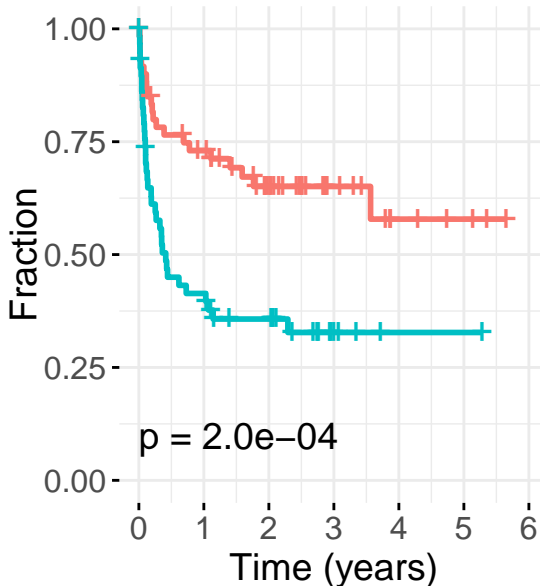
Ibrutinib~ OS

Strata + high + low



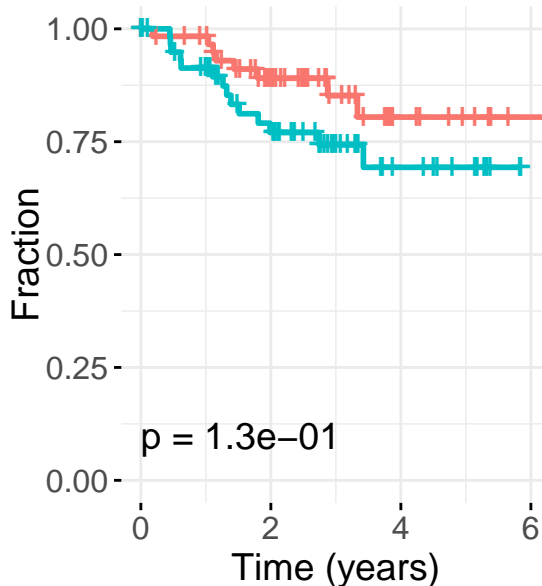
Midostaurin~ TTT

Strata + high + low



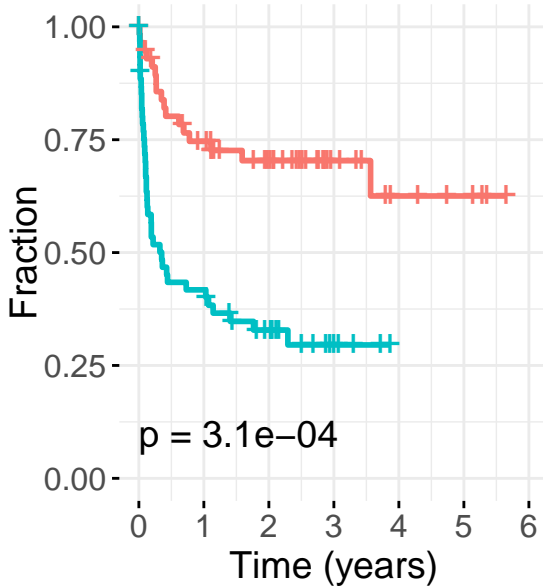
Midostaurin~ OS

Strata + high + low



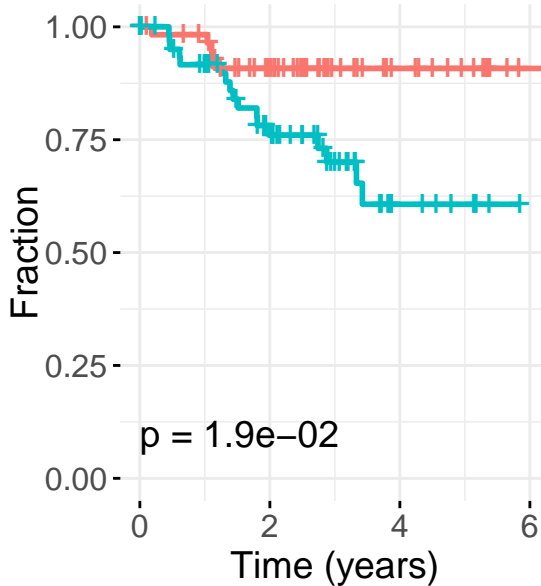
Sotrastaurin~ TTT

Strata + high + low



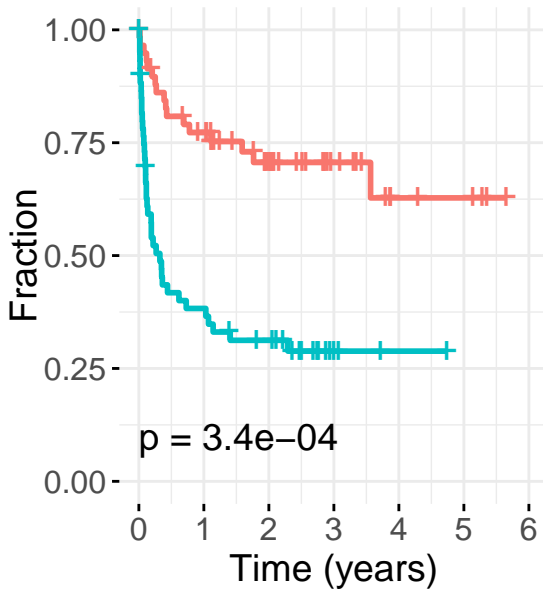
Sotrastaurin~ OS

Strata + high + low



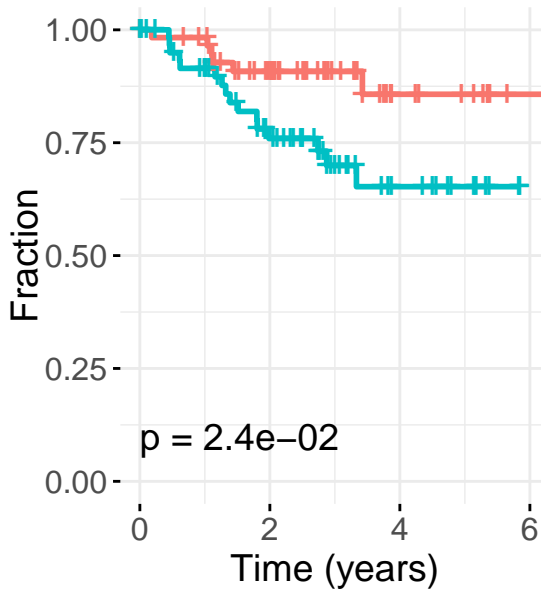
Spebrutinib~ TTT

Strata + high + low



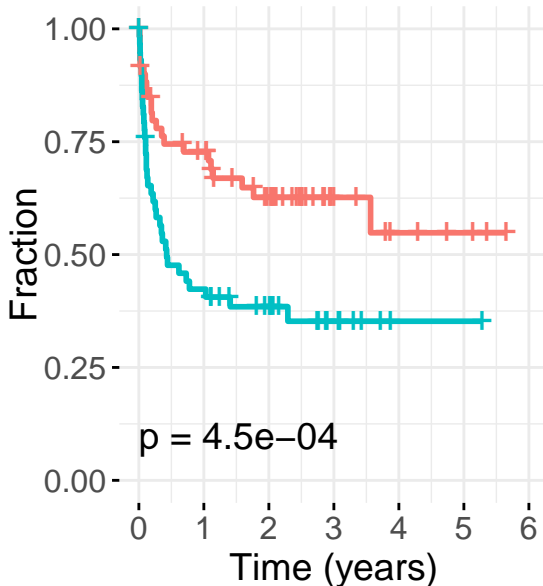
Spebrutinib~ OS

Strata + high + low



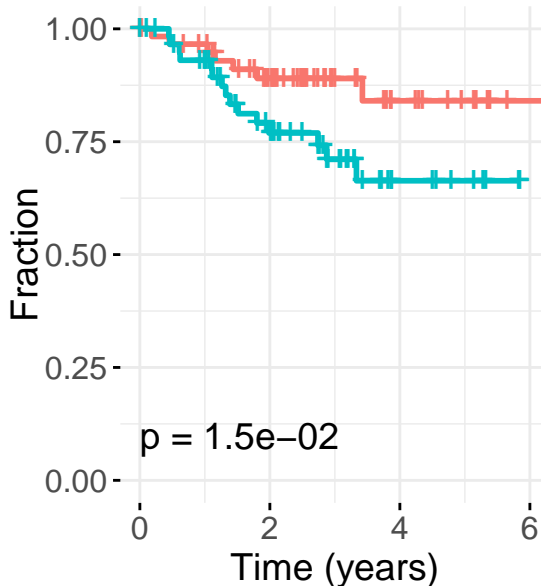
PD318088~ TTT

Strata + high + low



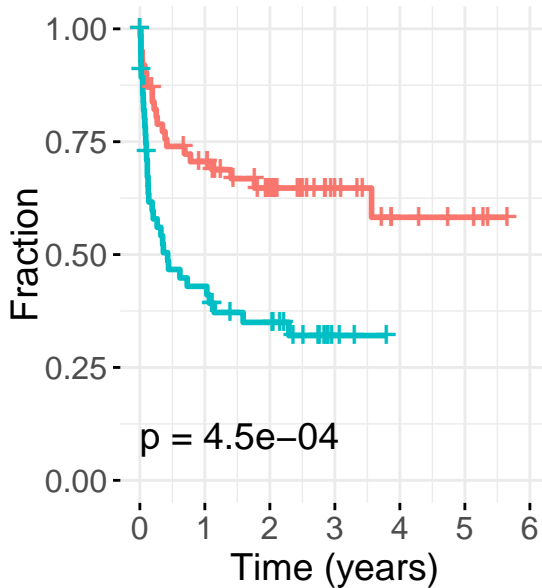
PD318088~ OS

Strata + high + low



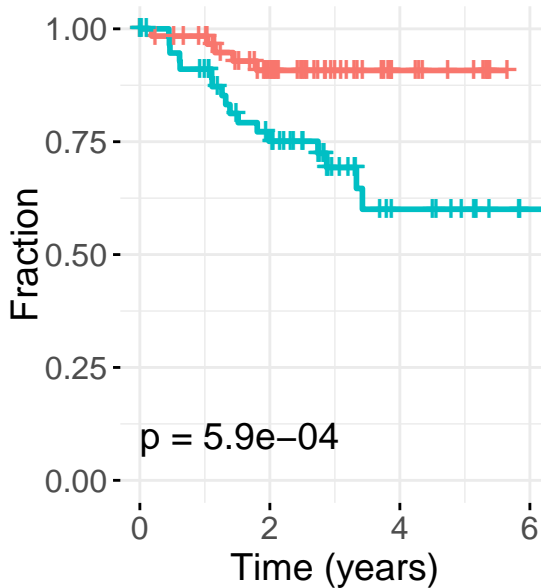
Onalespib~ TTT

Strata + high + low



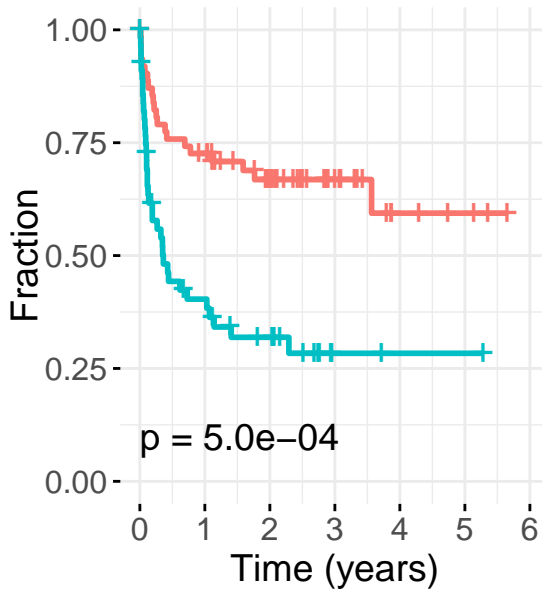
Onalespib~ OS

Strata + high + low



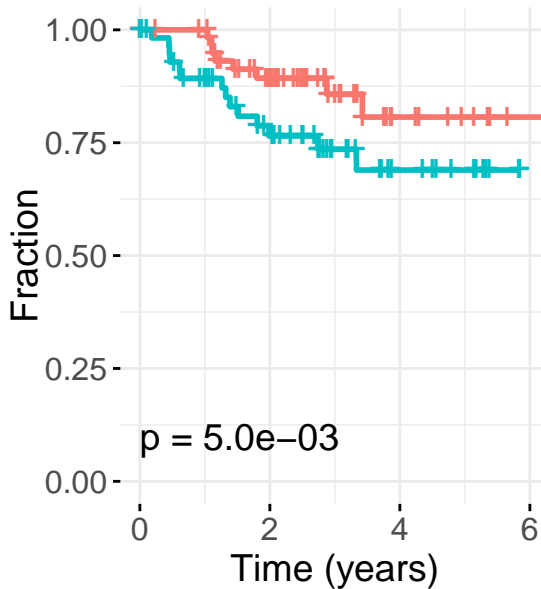
PF-477736~ TTT

Strata + high + low



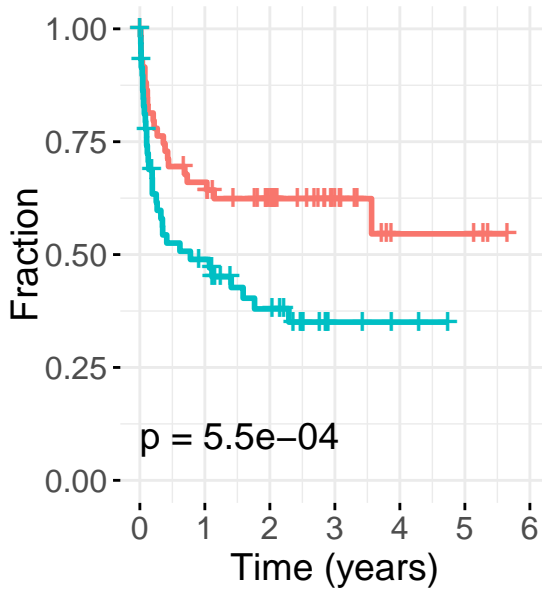
PF-477736~ OS

Strata + high + low



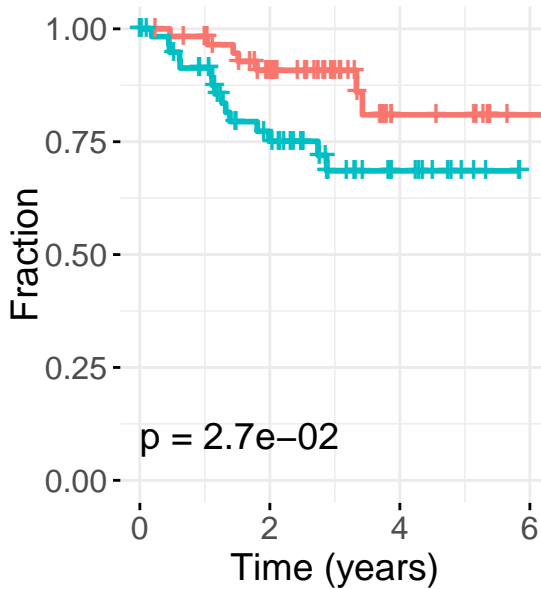
Docetaxel~ TTT

Strata + high + low



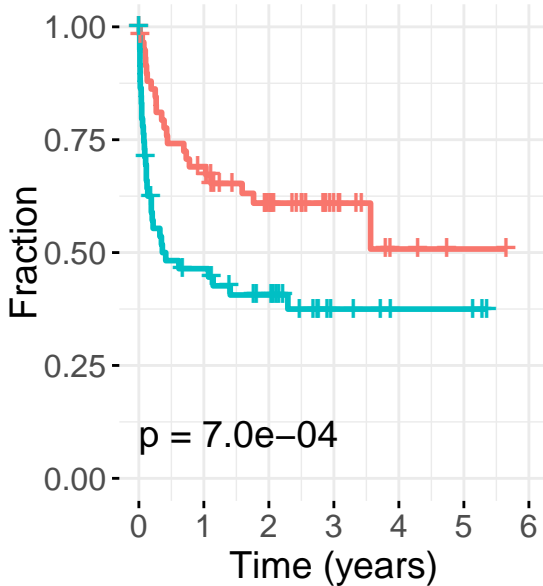
Docetaxel~ OS

Strata + high + low



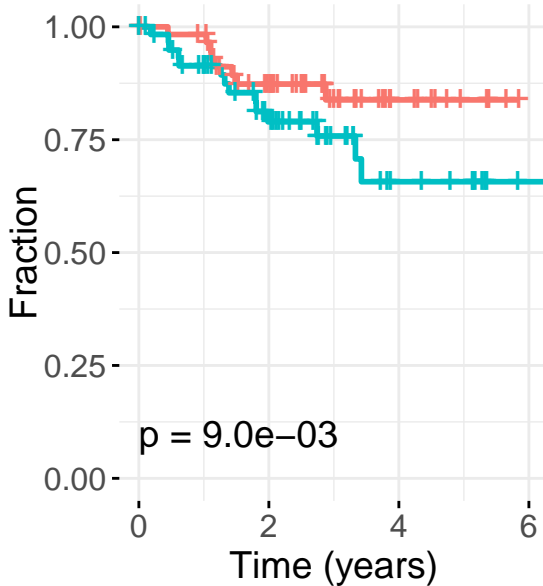
KW 2449~ TTT

Strata + high + low



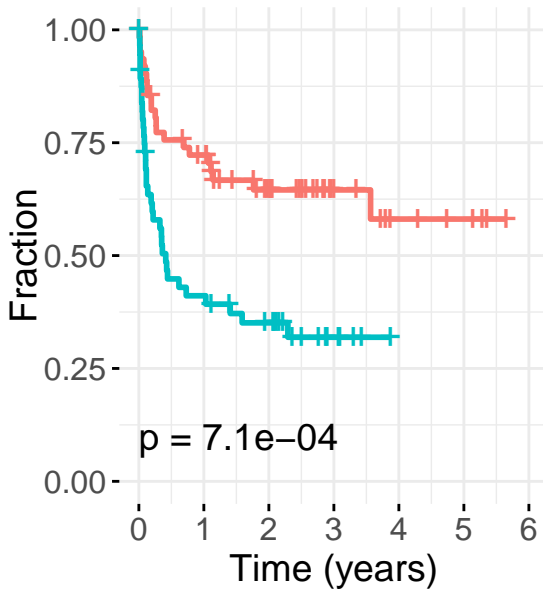
KW 2449~ OS

Strata + high + low



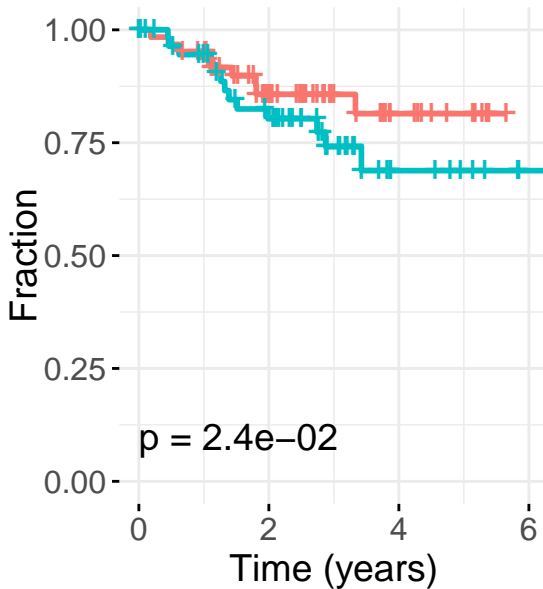
R406~ TTT

Strata + high + low



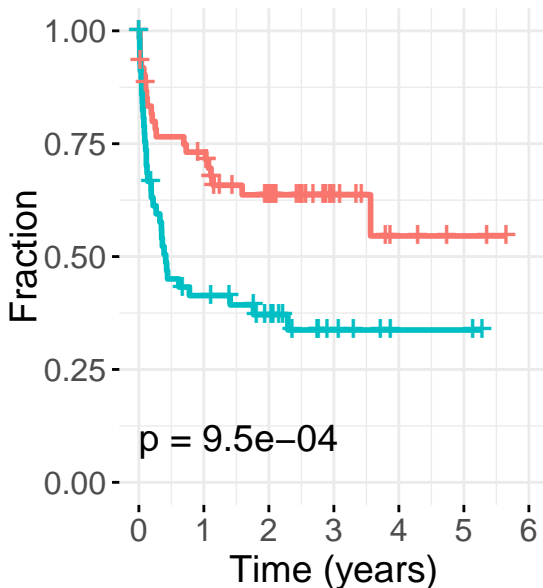
R406~ OS

Strata + high + low



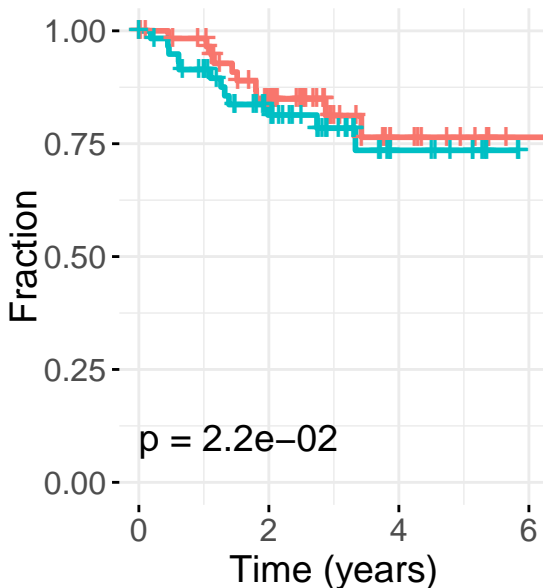
Trametinib~ TTT

Strata + high + low



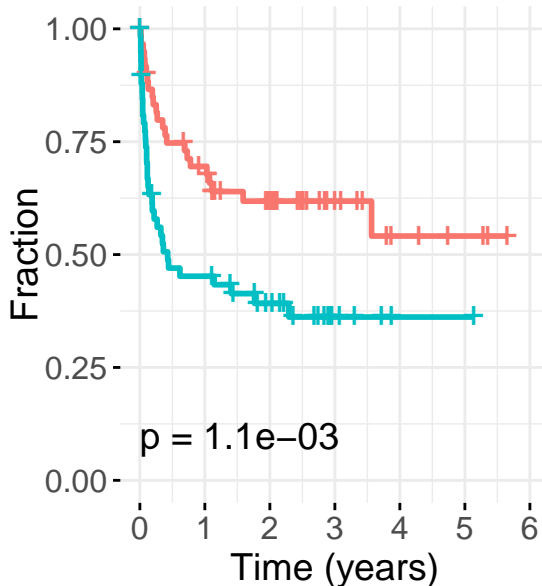
Trametinib~ OS

Strata + high + low



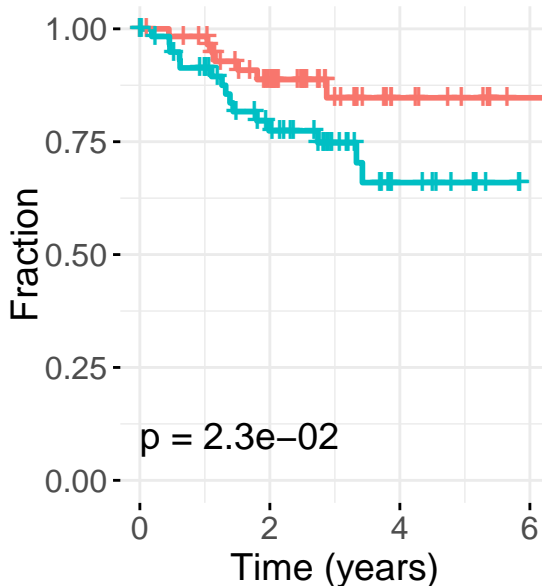
Ompalisib~ TTT

Strata + high + low



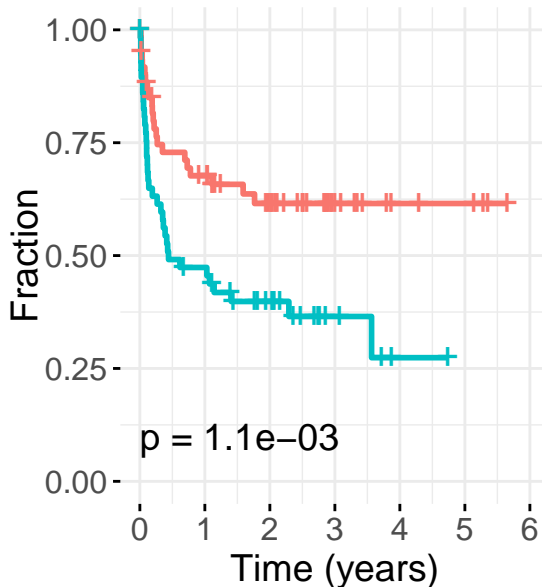
Ompalisib~ OS

Strata + high + low



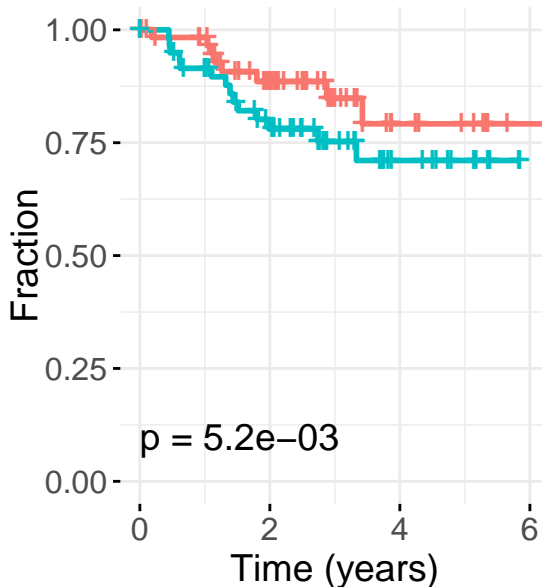
PD0325901~ TTT

Strata + high + low



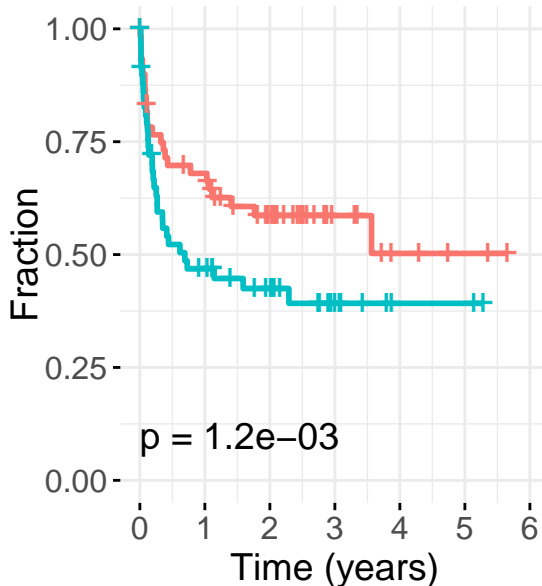
PD0325901~ OS

Strata + high + low



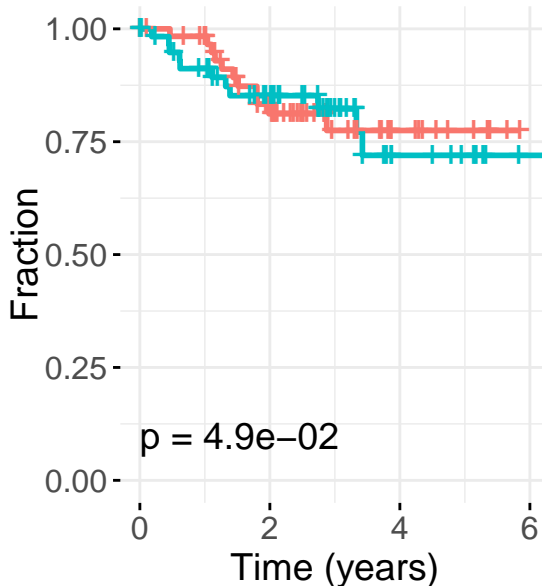
VU 0155069~ TTT

Strata + high + low



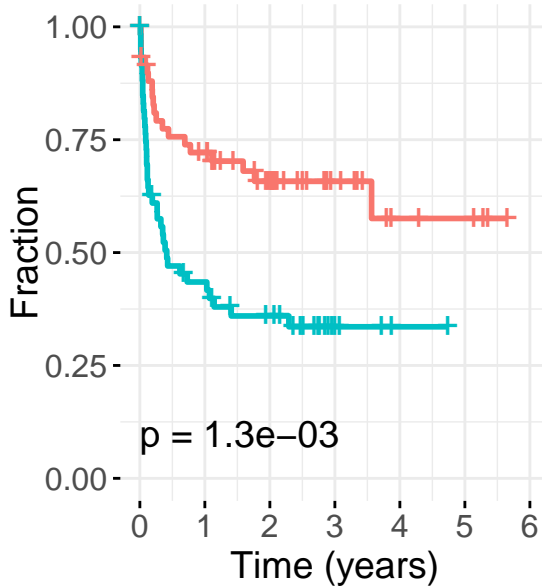
VU 0155069~ OS

Strata + high + low



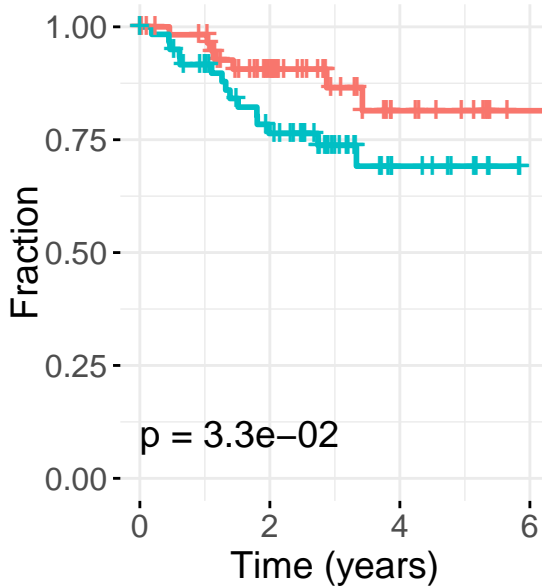
Selumetinib~ TTT

Strata + high + low



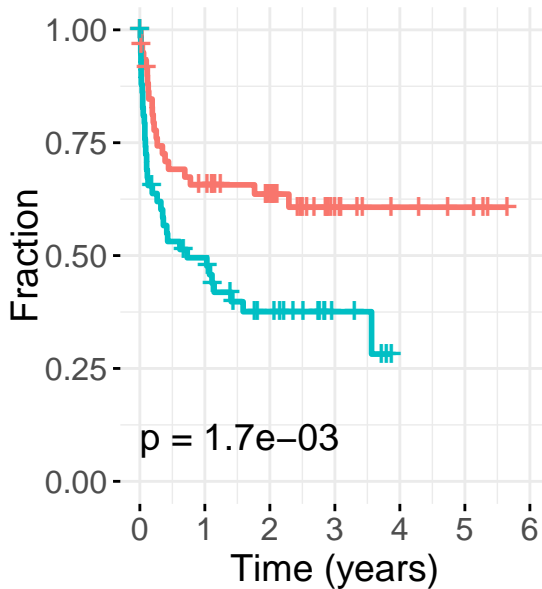
Selumetinib~ OS

Strata + high + low



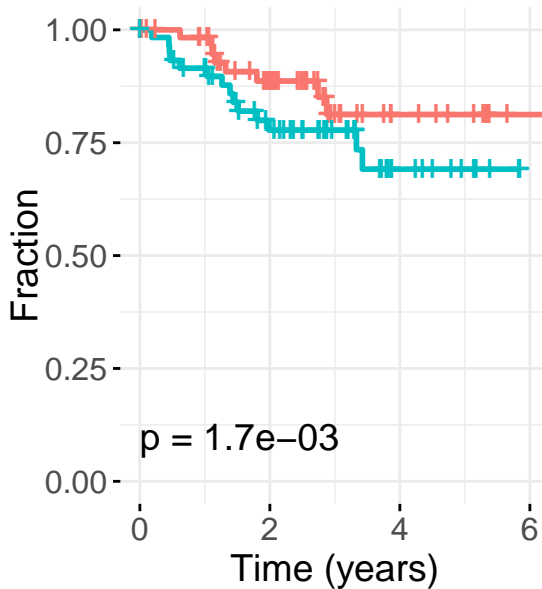
GSK461364~ TTT

Strata + high + low



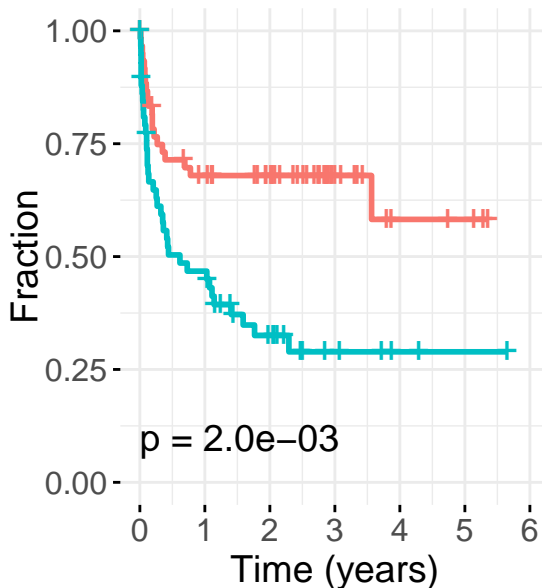
GSK461364~ OS

Strata + high + low



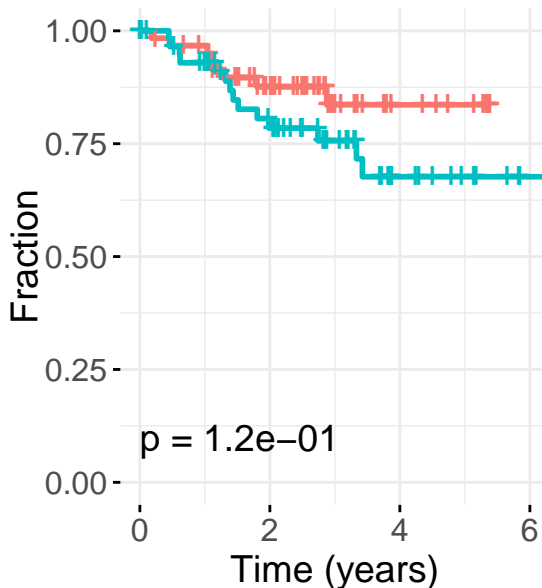
AZ191~ TTT

Strata + high + low



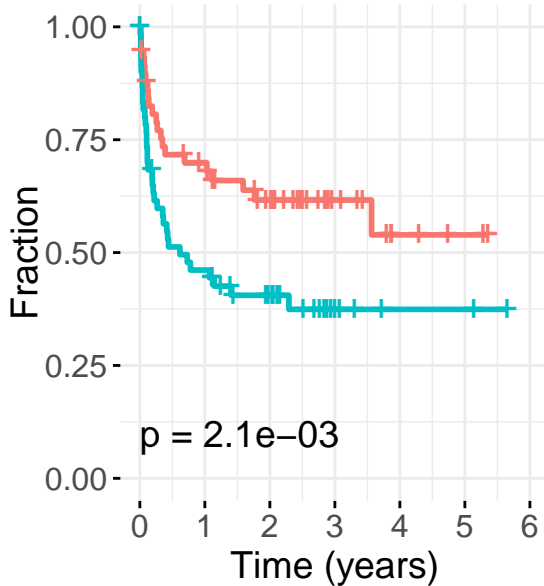
AZ191~ OS

Strata + high + low



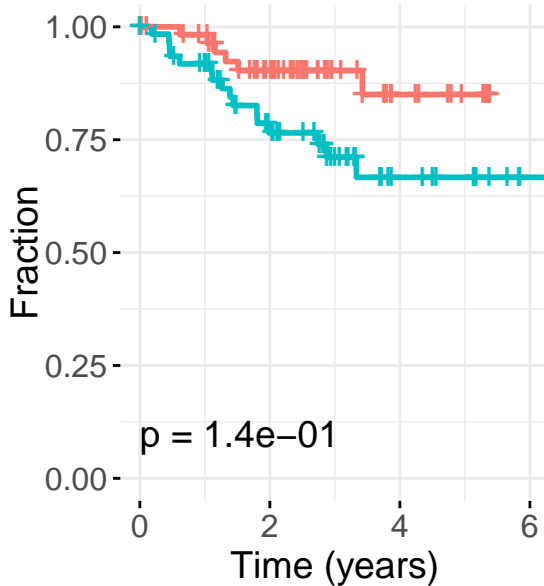
CCT251545~ TTT

Strata + high + low



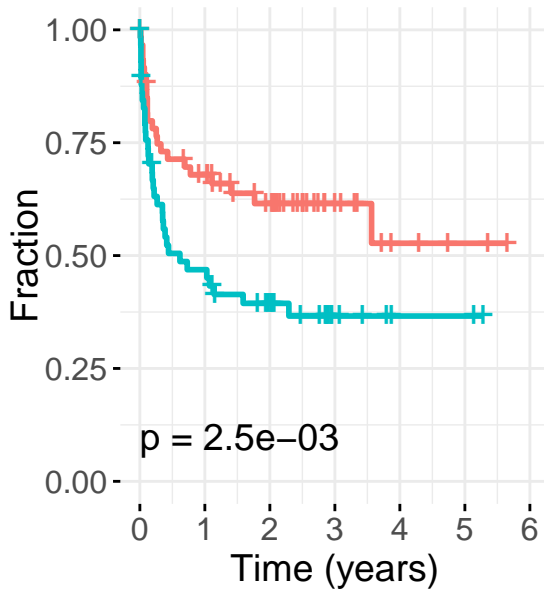
CCT251545~ OS

Strata + high + low



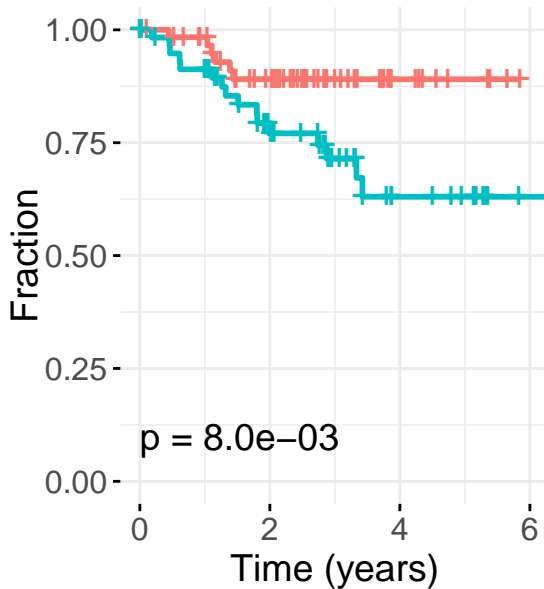
Ruboxistaurin~ TTT

Strata + high + low



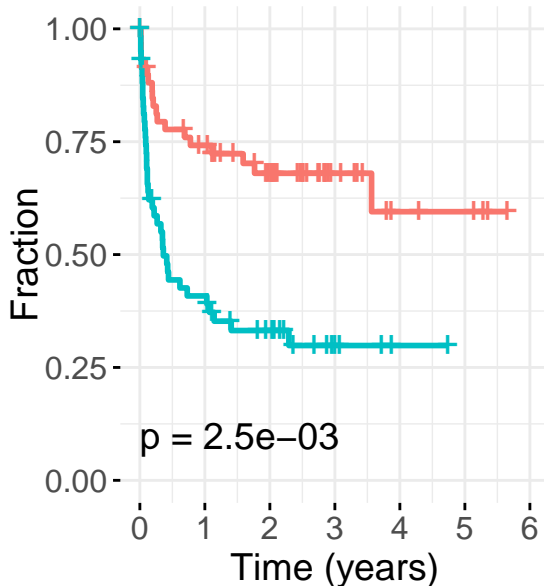
Ruboxistaurin~ OS

Strata + high + low



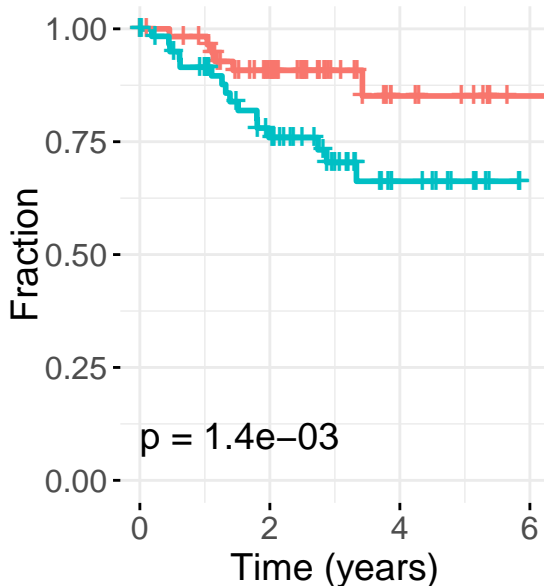
GDC-0032~ TTT

Strata + high + low



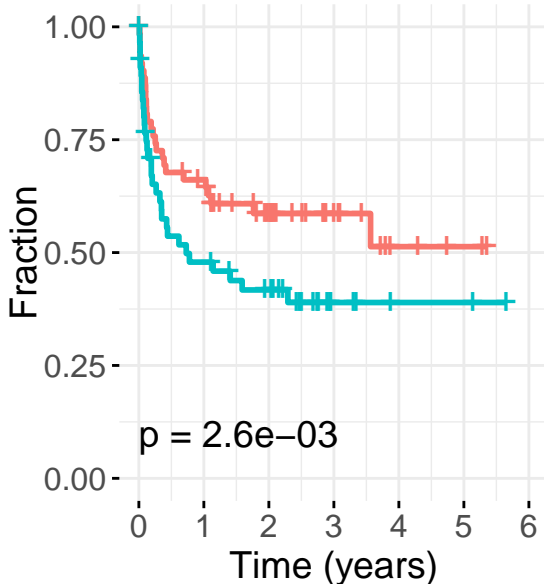
GDC-0032~ OS

Strata + high + low



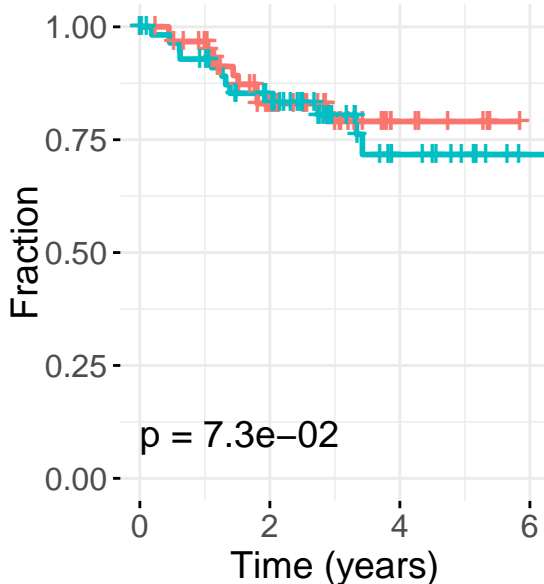
IKK-16~ TTT

Strata + high + low



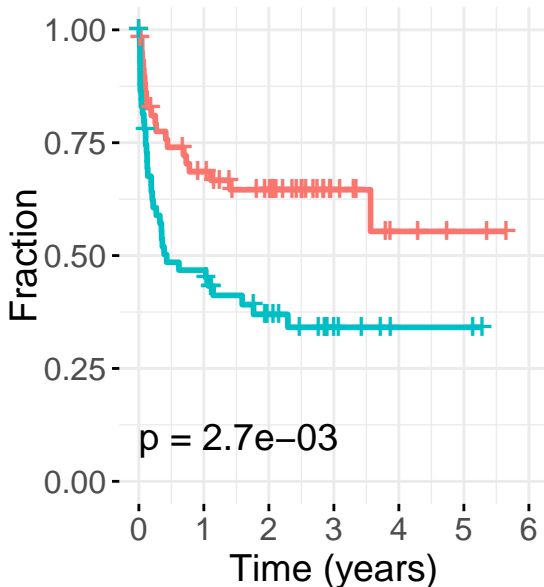
IKK-16~ OS

Strata + high + low



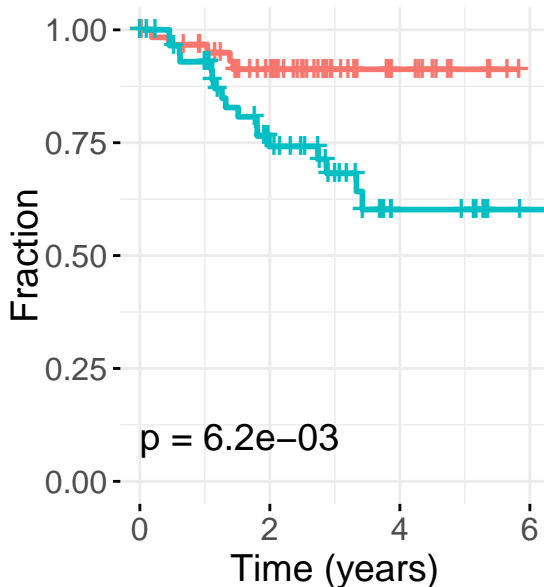
Sodium dichloroacetate~ T

Strata + high + low



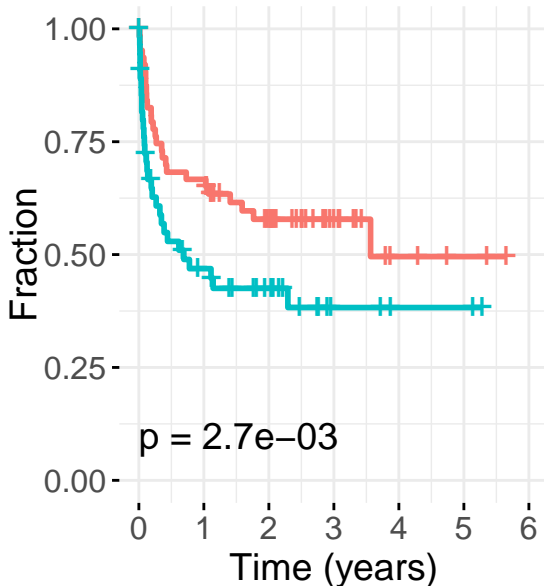
Sodium dichloroacetate~ C

Strata + high + low



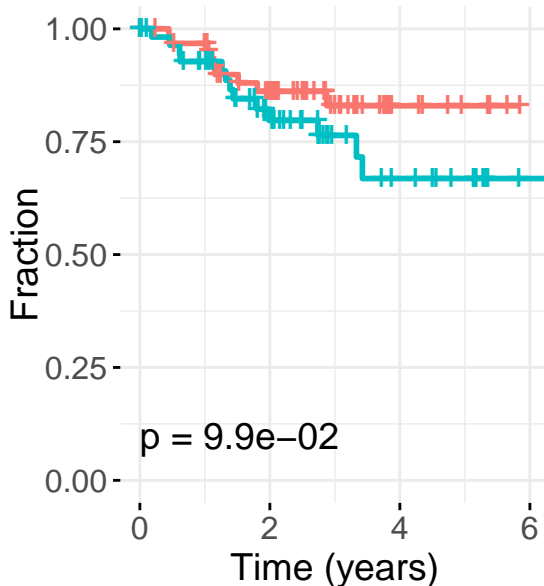
R428~ TTT

Strata + high + low



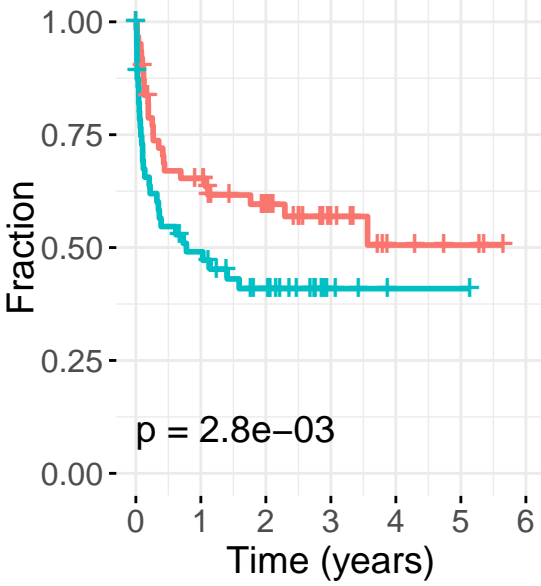
R428~ OS

Strata + high + low



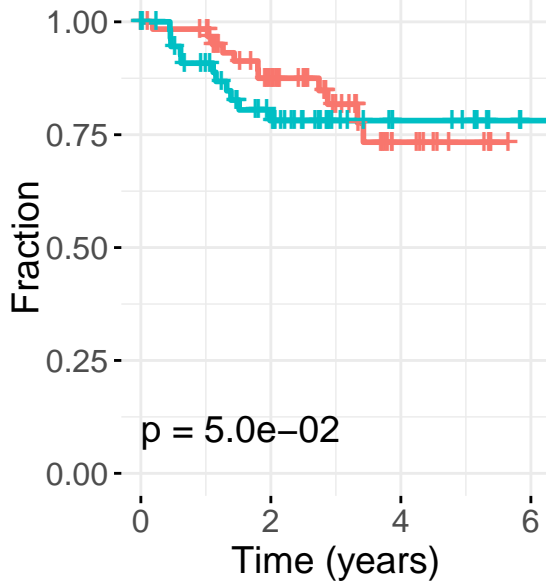
Tozasertib~ TTT

Strata + high + low



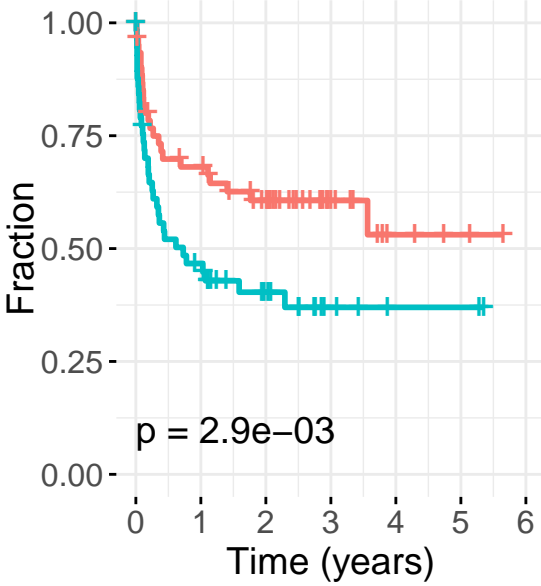
Tozasertib~ OS

Strata + high + low



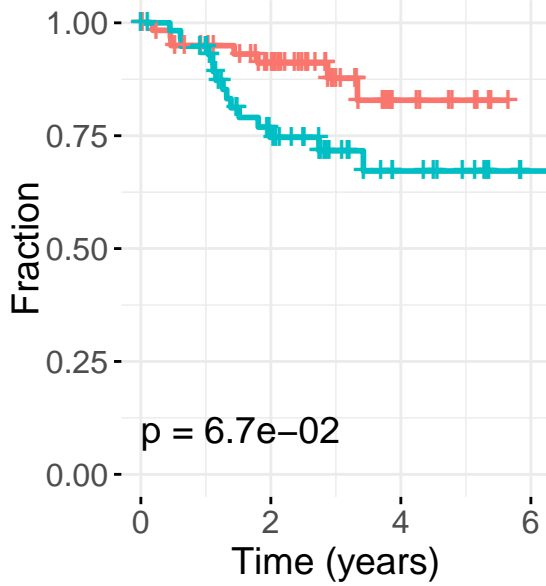
Hydroxychloroquine~ TT

Strata + high + low



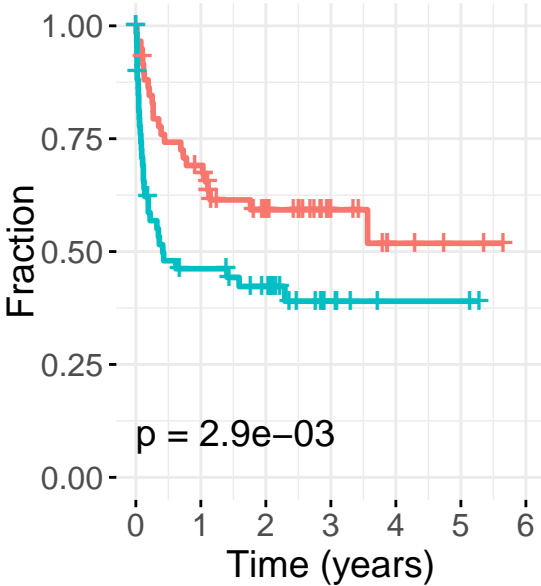
Hydroxychloroquine~ OS

Strata + high + low



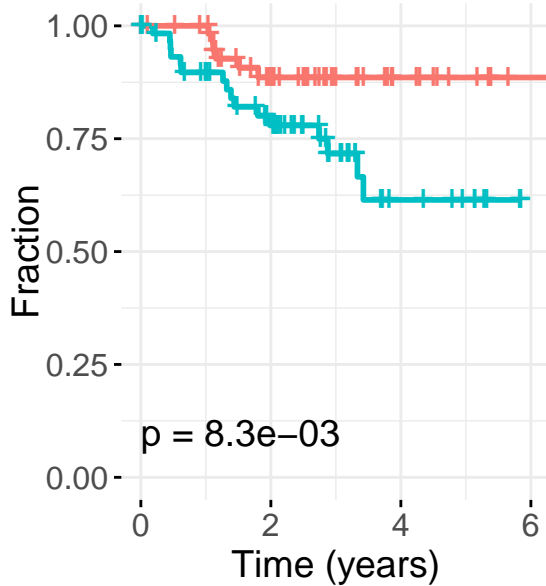
PF-573228~ TTT

Strata + high + low



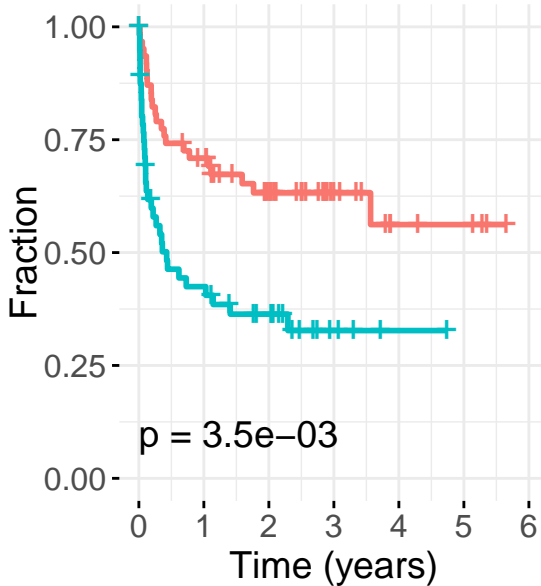
PF-573228~ OS

Strata + high + low



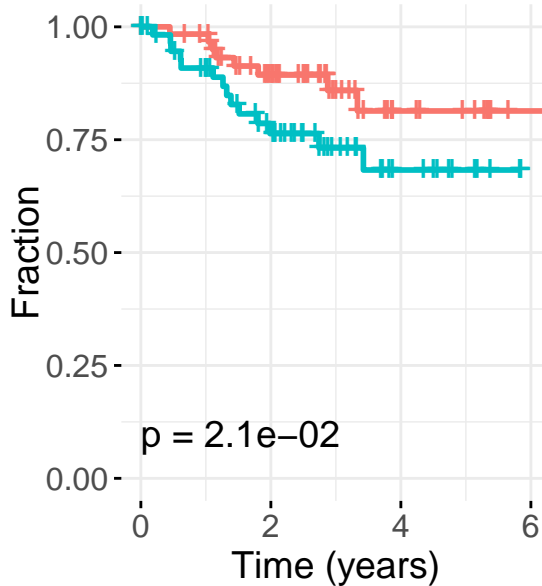
Dasatinib~ TTT

Strata + high + low



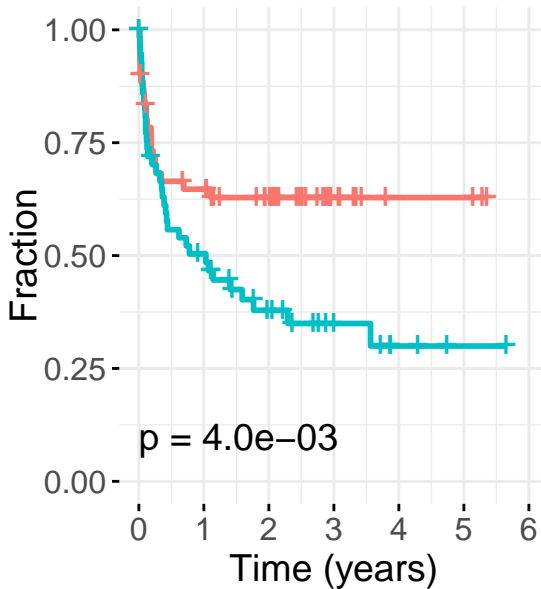
Dasatinib~ OS

Strata + high + low



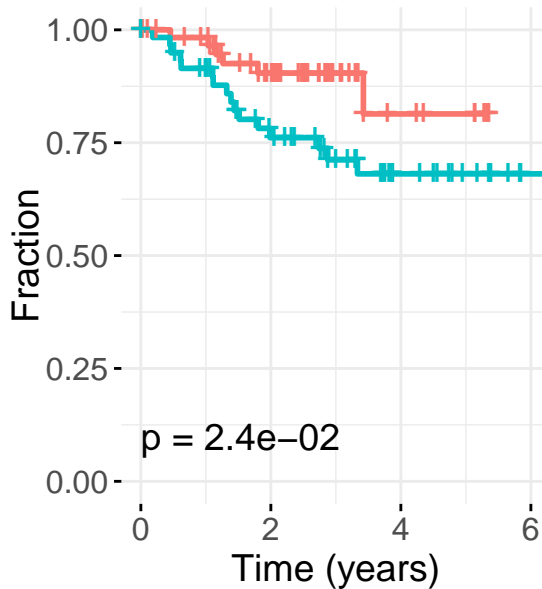
TGX-221~ TTT

Strata + high + low



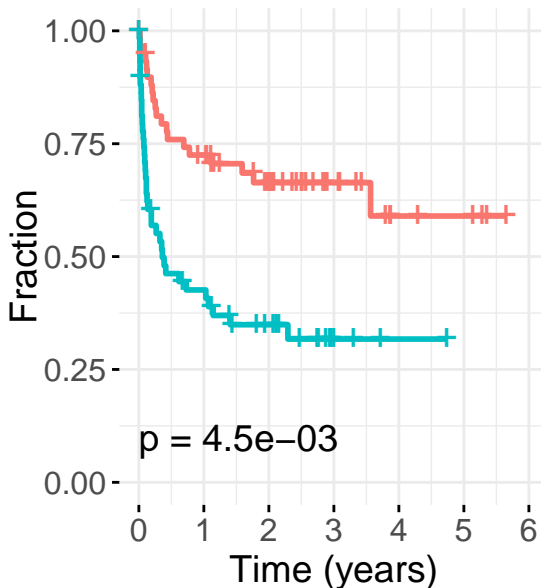
TGX-221~ OS

Strata + high + low



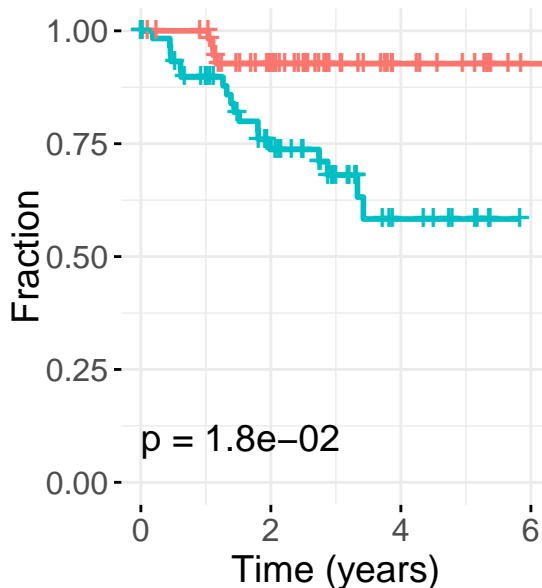
TG101209~ TTT

Strata + high + low



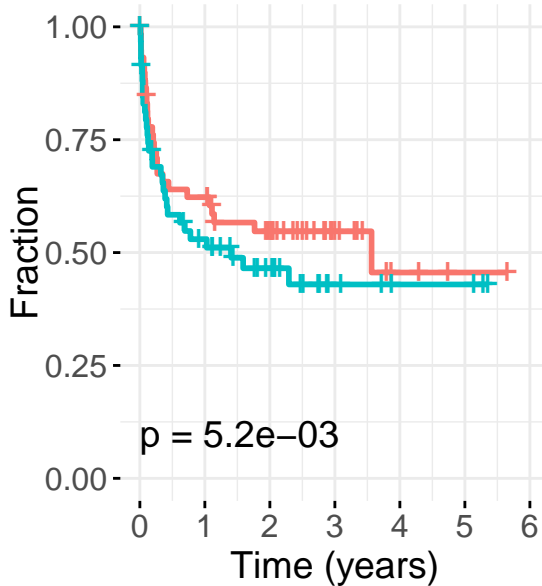
TG101209~ OS

Strata + high + low



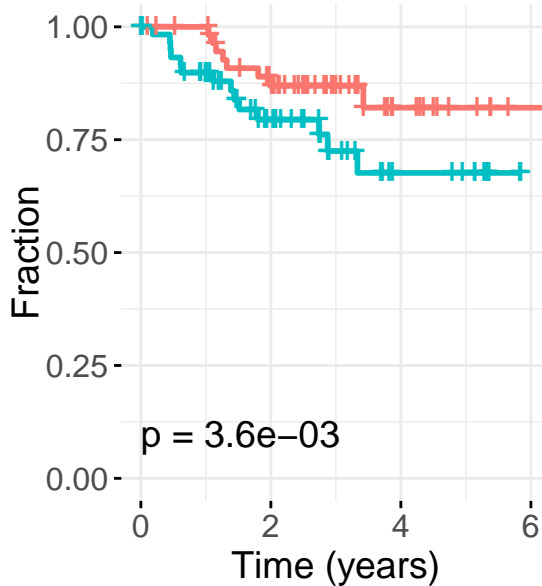
SP600125~ TTT

Strata high low



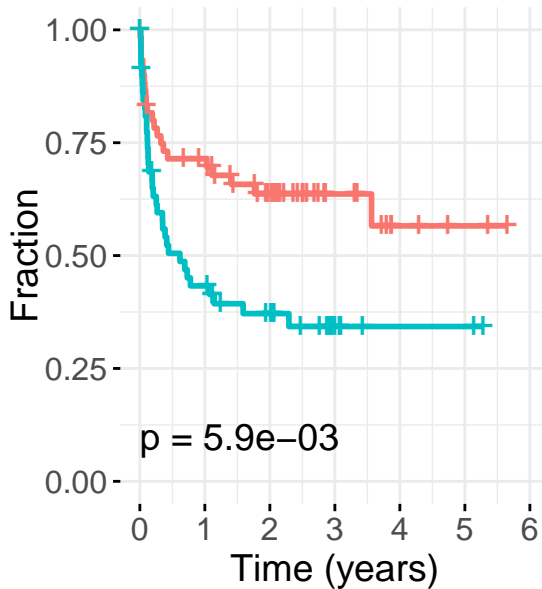
SP600125~ OS

Strata high low



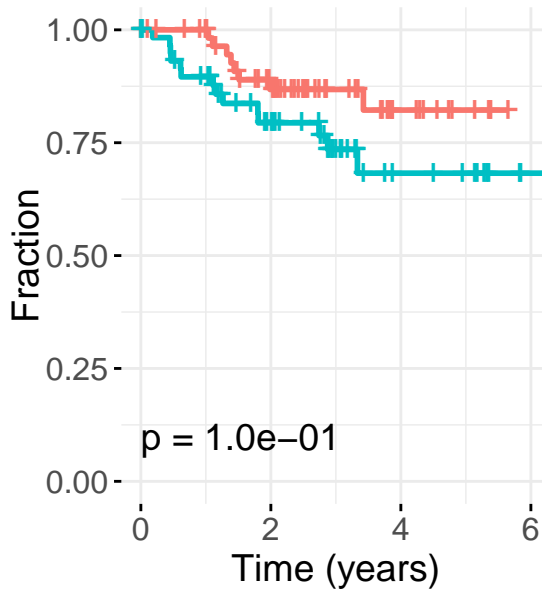
NOX1 Inhibitor~ TTT

Strata high low



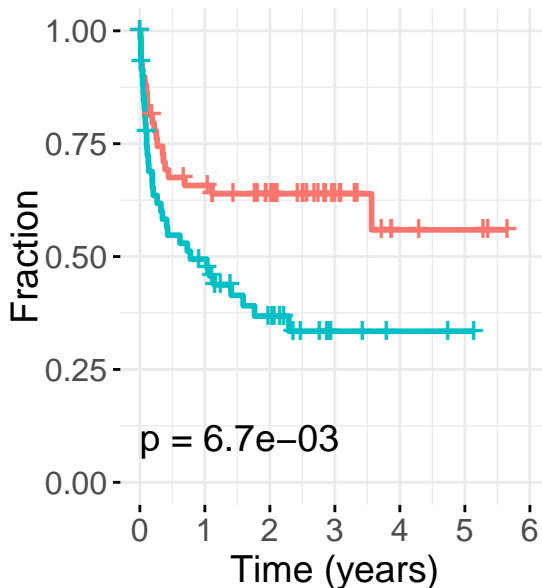
NOX1 Inhibitor~ OS

Strata high low



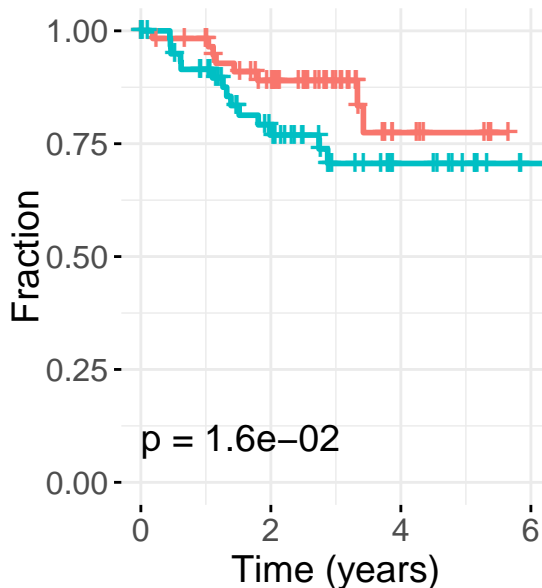
PD173074~ TTT

Strata high low



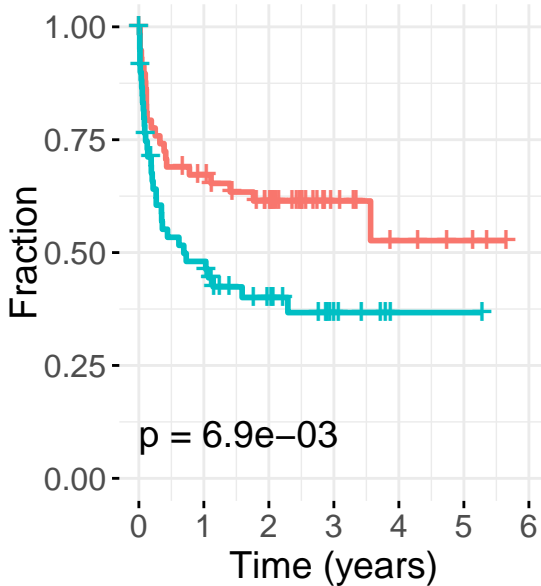
PD173074~ OS

Strata high low



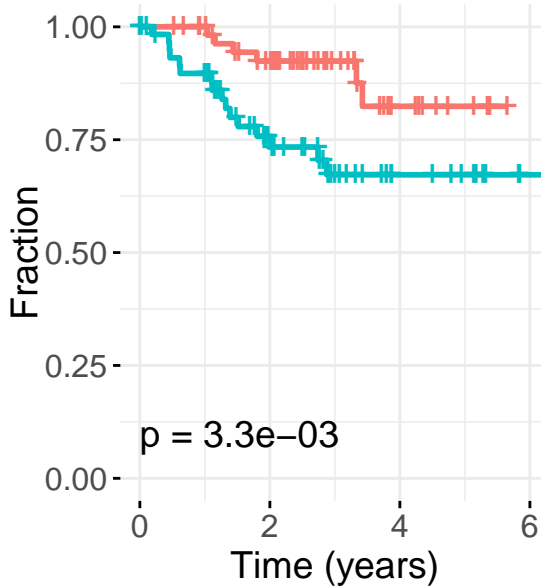
JNK-IN-8~ TTT

Strata + high + low



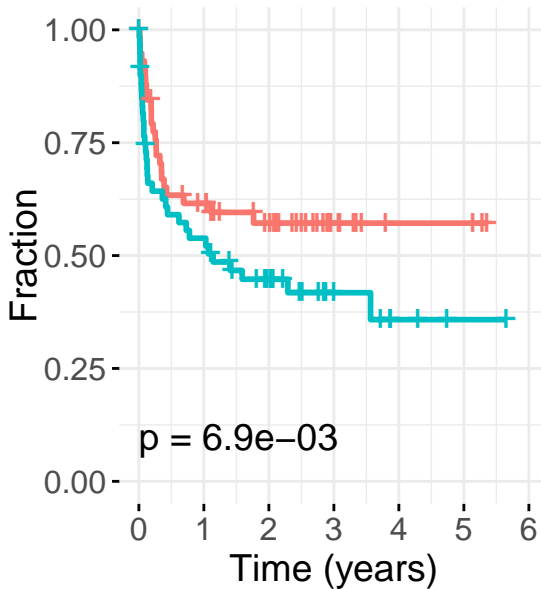
JNK-IN-8~ OS

Strata + high + low



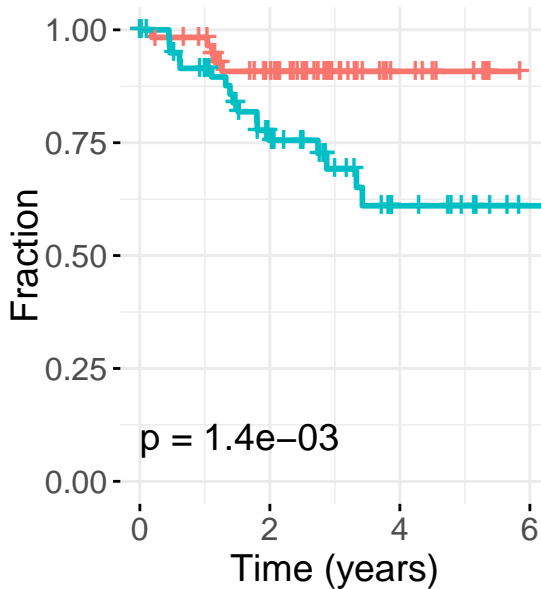
Staurosporine~ TTT

Strata + high + low



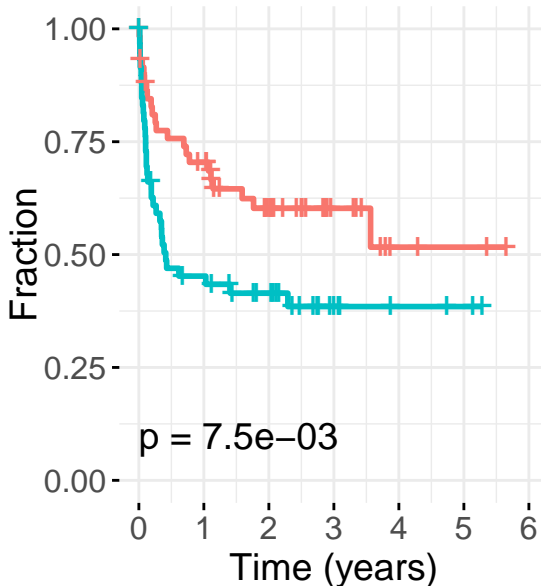
Staurosporine~ OS

Strata + high + low



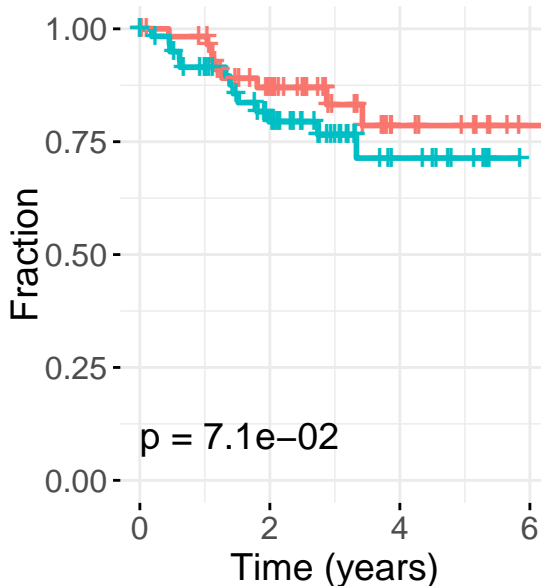
PD184352~ TTT

Strata + high + low



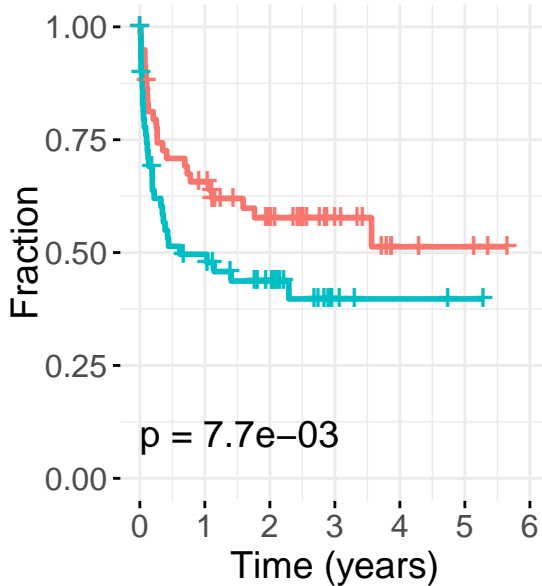
PD184352~ OS

Strata + high + low



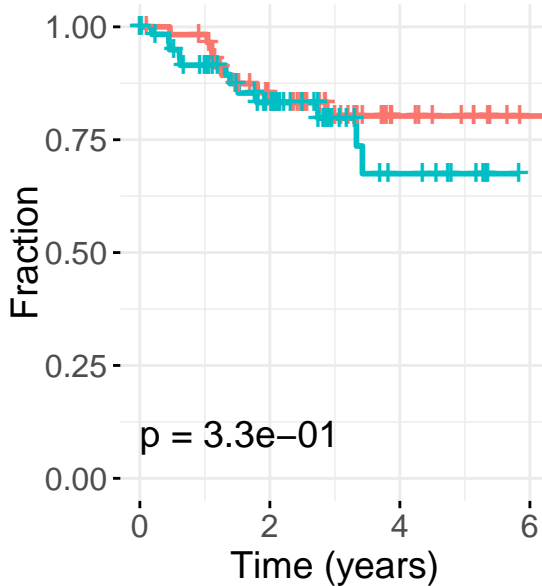
Fedratinib~ TTT

Strata + high + low



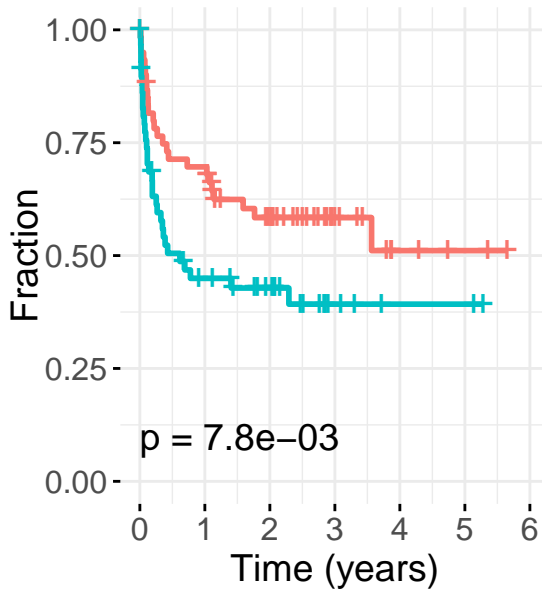
Fedratinib~ OS

Strata + high + low



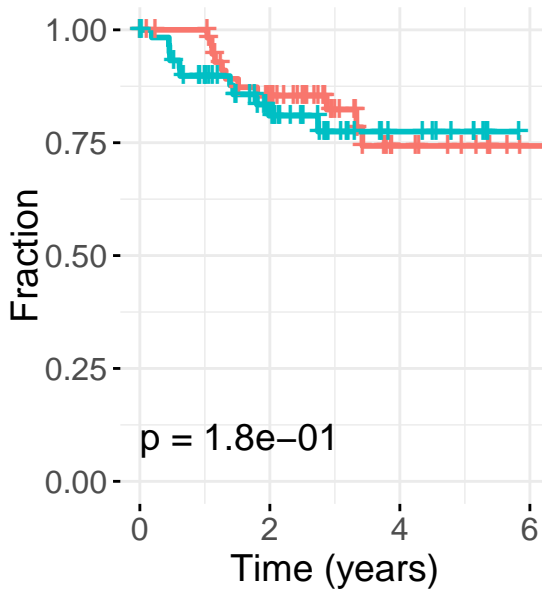
PF-562271~ TTT

Strata + high + low



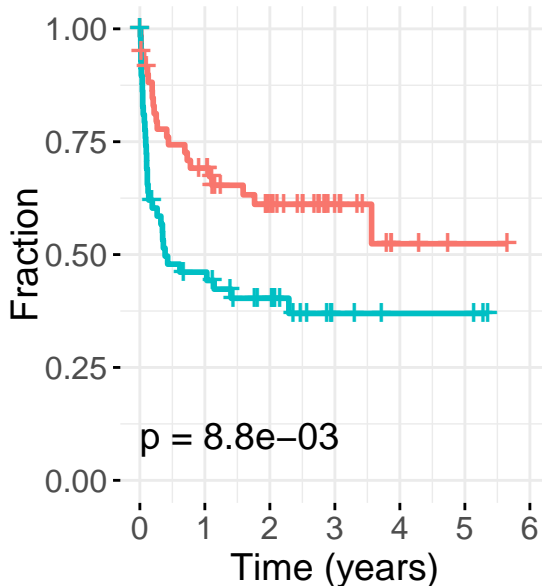
PF-562271~ OS

Strata + high + low



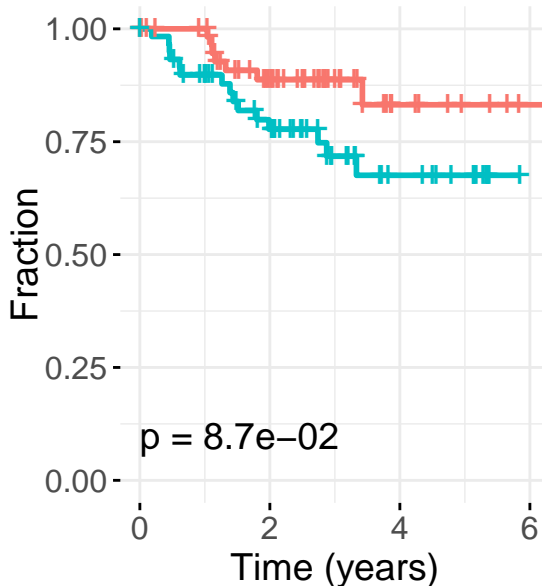
AZD1480~ TTT

Strata + high + low



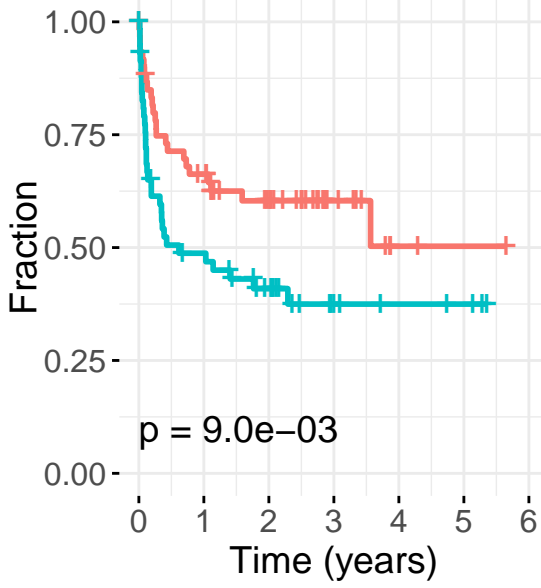
AZD1480~ OS

Strata + high + low



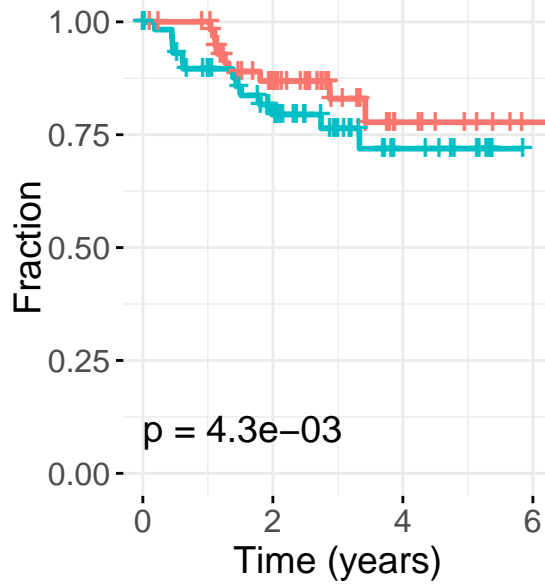
RAF265~ TTT

Strata high low



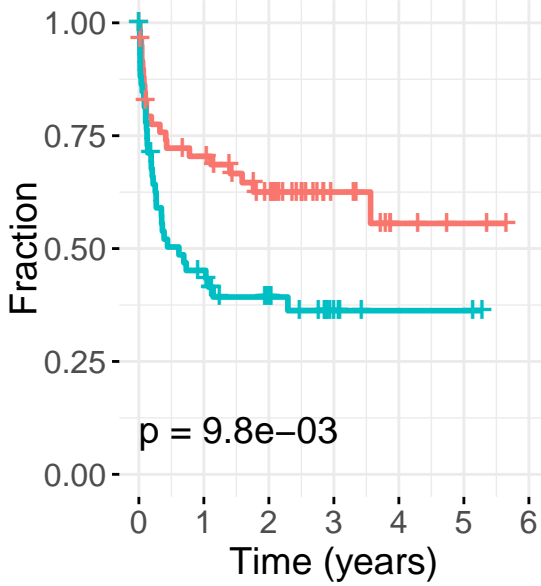
RAF265~ OS

Strata high low



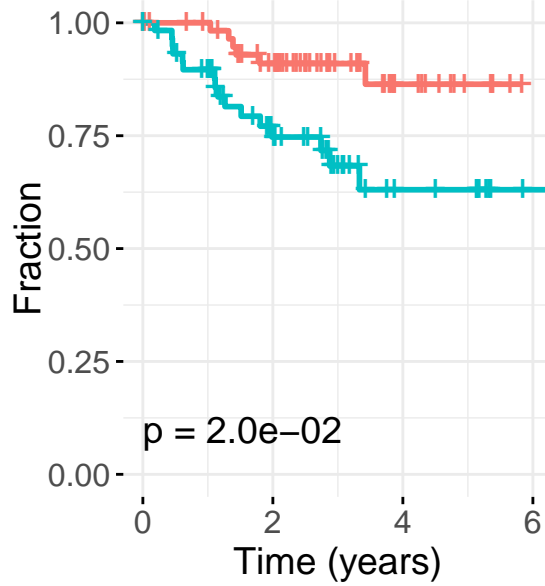
Kifunensine~ TTT

Strata high low



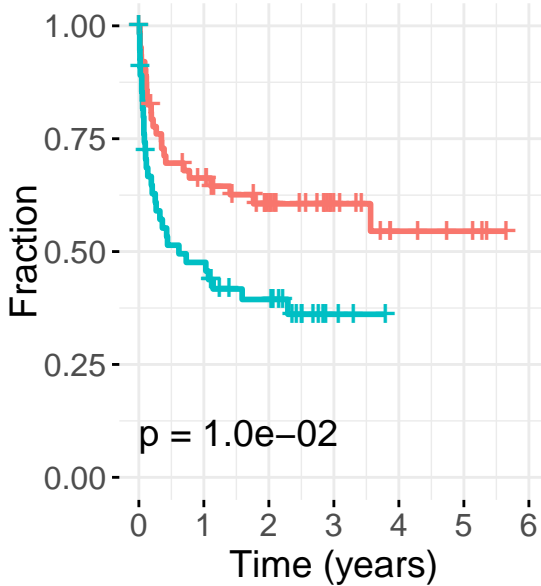
Kifunensine~ OS

Strata high low



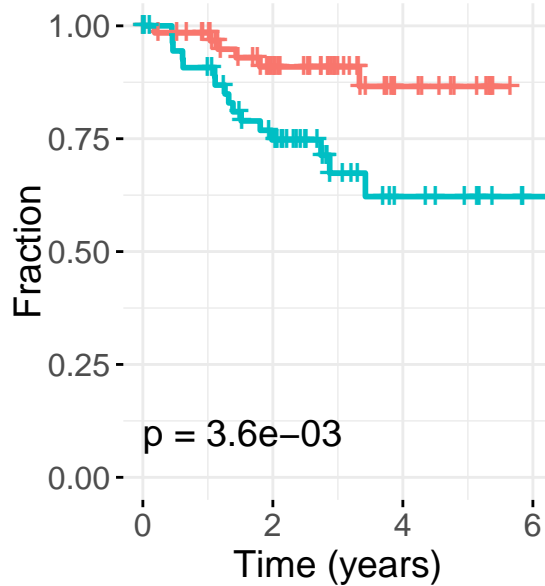
Luminespib~ TTT

Strata high low



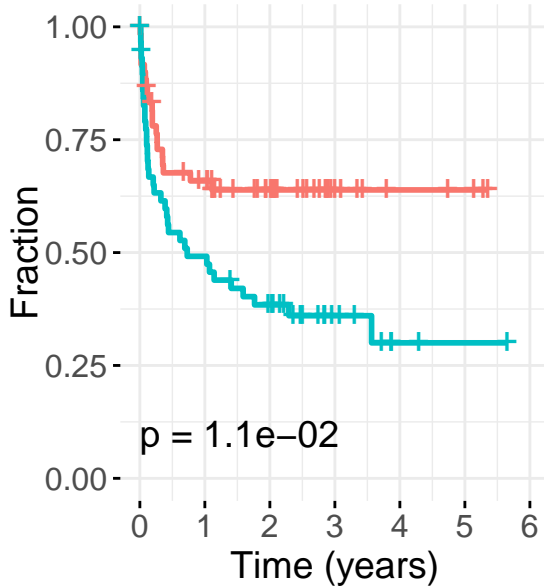
Luminespib~ OS

Strata high low



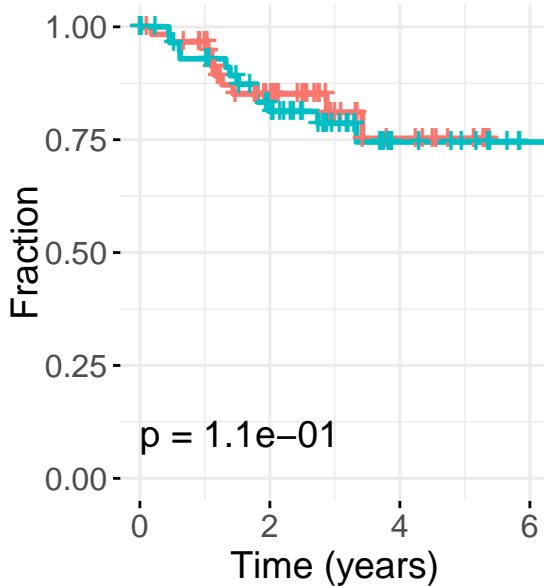
NU7441~ TTT

Strata + high + low



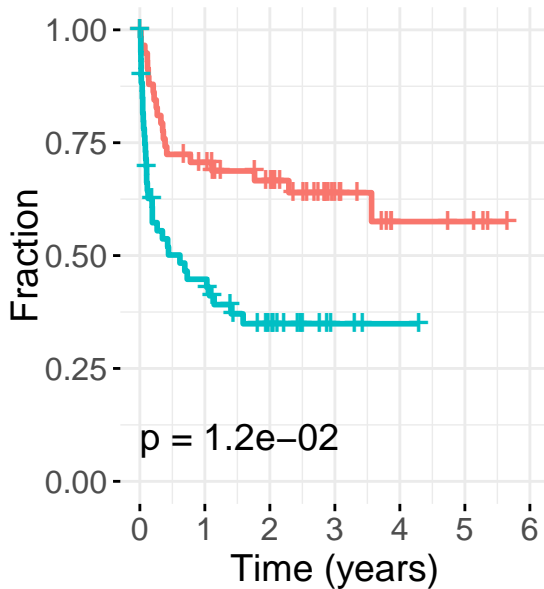
NU7441~ OS

Strata + high + low



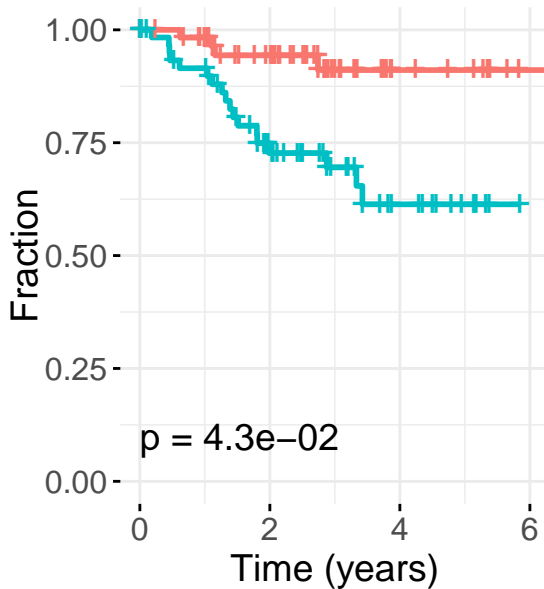
Imatinib~ TTT

Strata + high + low



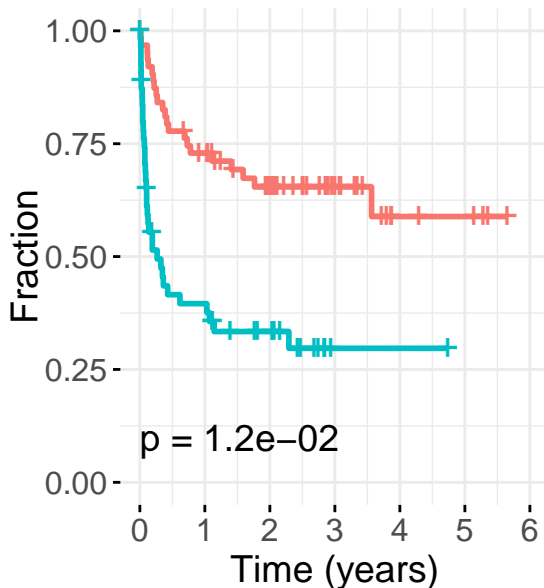
Imatinib~ OS

Strata + high + low



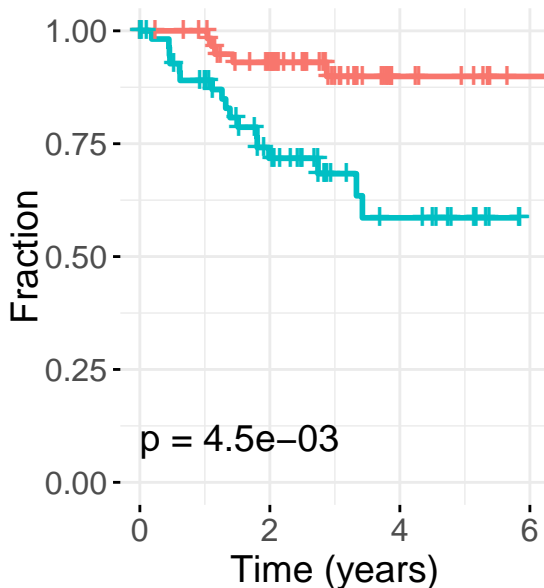
Bosutinib~ TTT

Strata + high + low



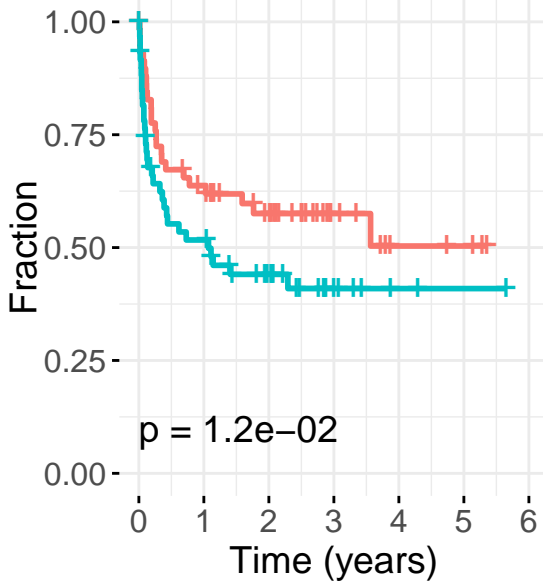
Bosutinib~ OS

Strata + high + low



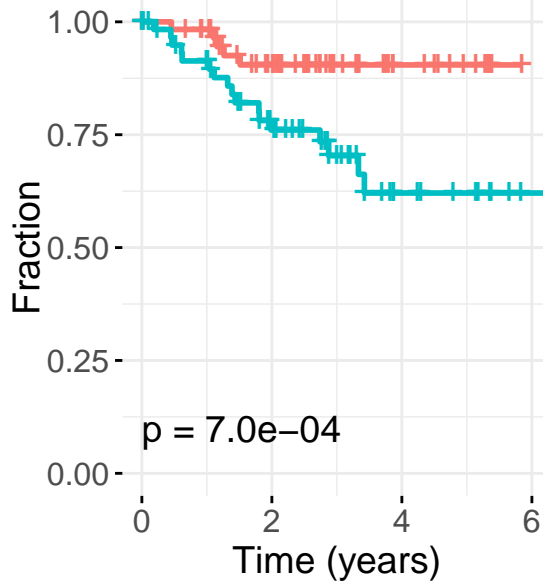
BS-181~ TTT

Strata high low



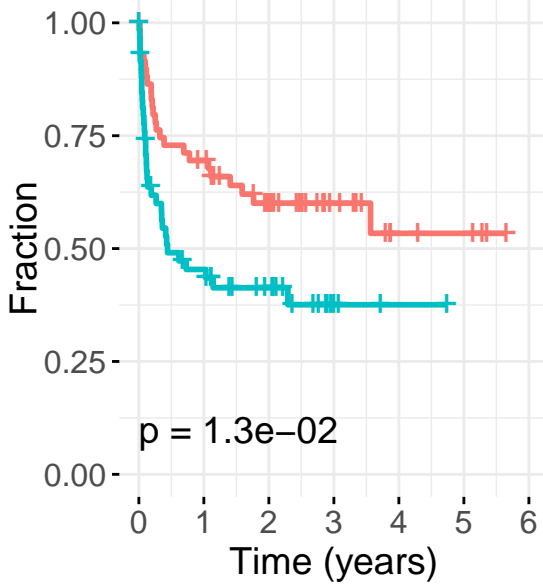
BS-181~ OS

Strata high low



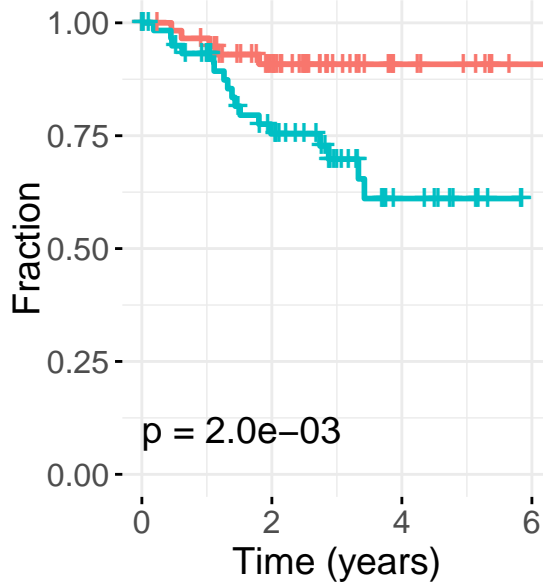
PD173955~ TTT

Strata high low



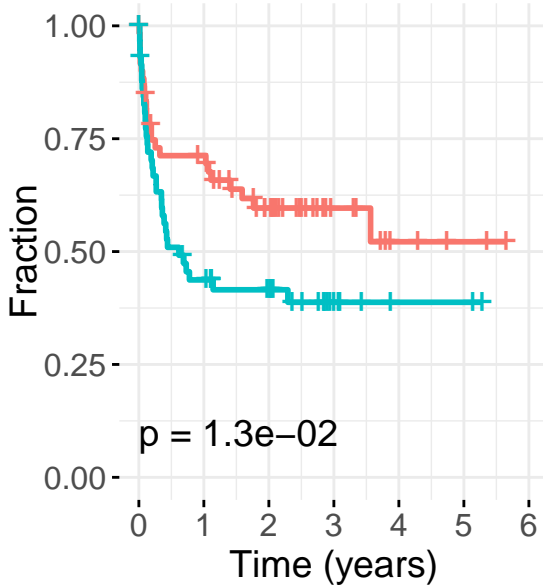
PD173955~ OS

Strata high low



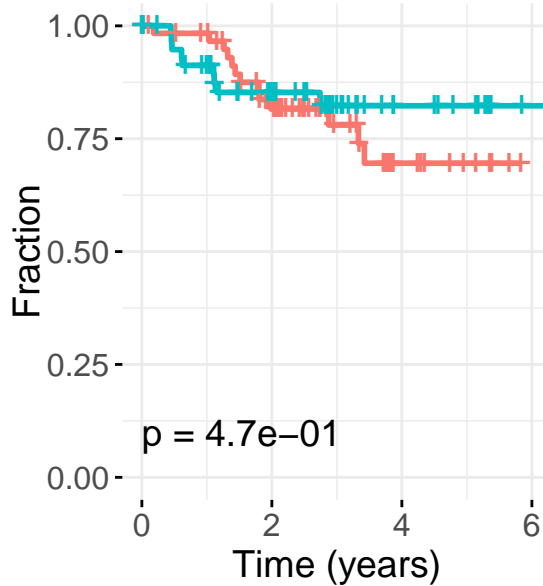
Veliparib~ TTT

Strata high low



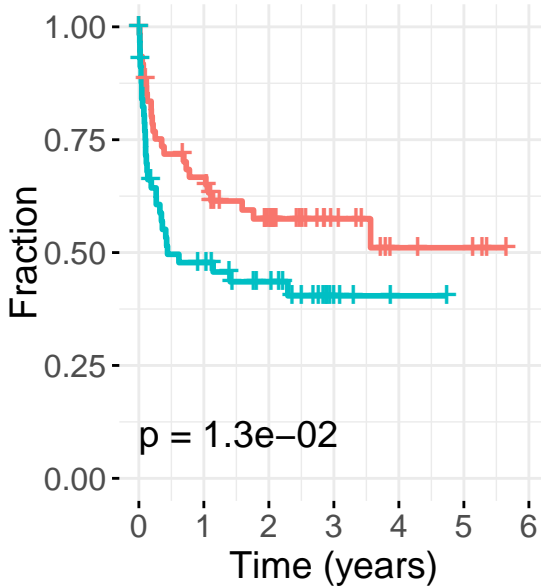
Veliparib~ OS

Strata high low



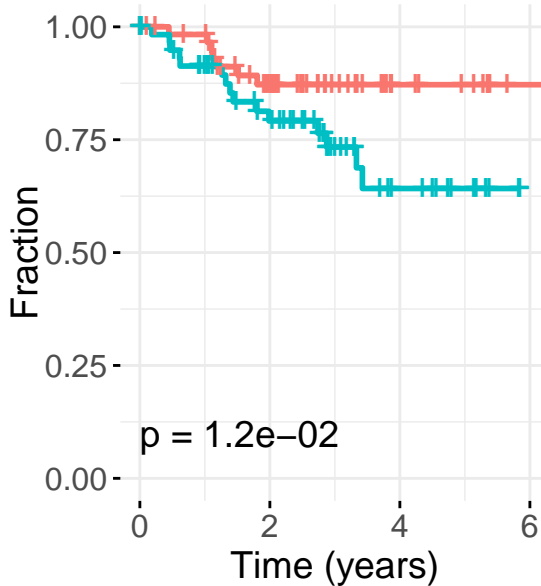
Pictilisib~ TTT

Strata + high + low



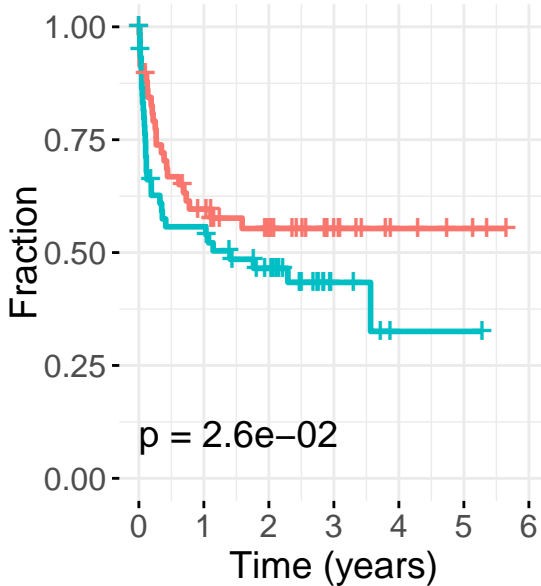
Pictilisib~ OS

Strata + high + low



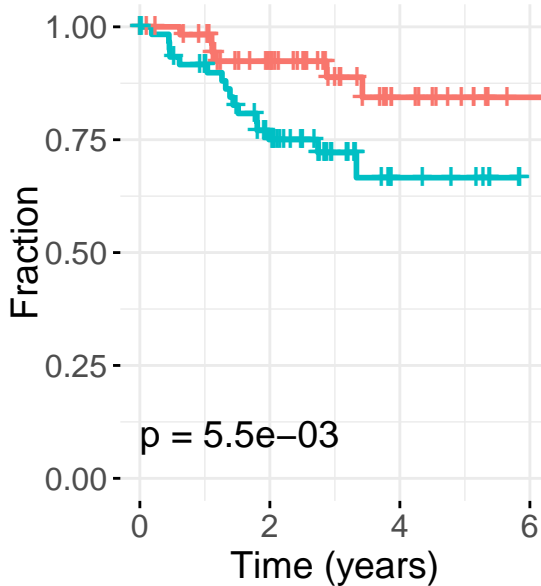
GSK1838705A~ TTT

Strata + high + low



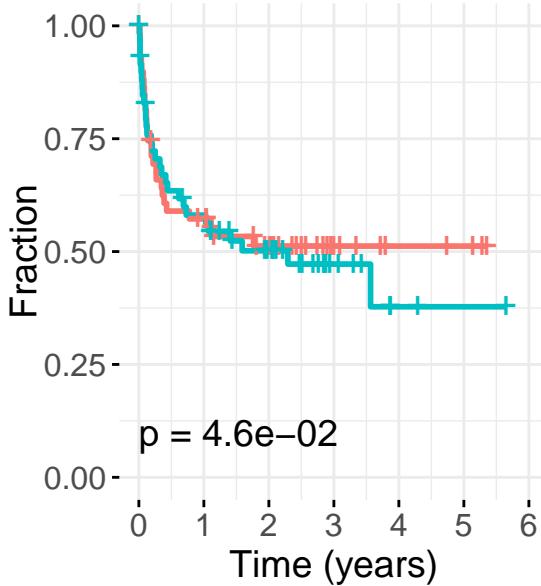
GSK1838705A~ OS

Strata + high + low



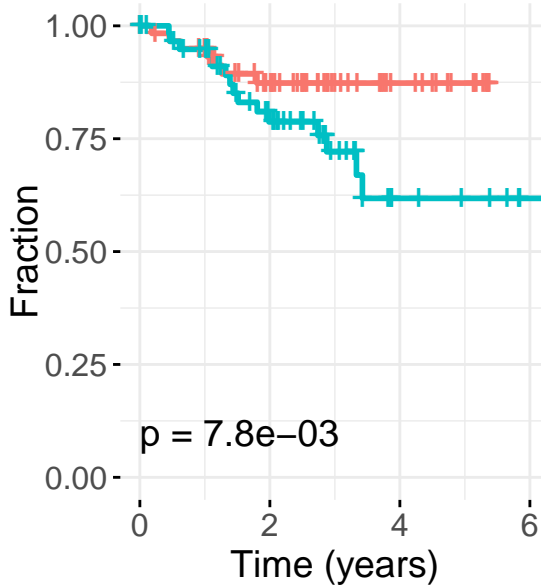
Dabrafenib~ TTT

Strata + high + low



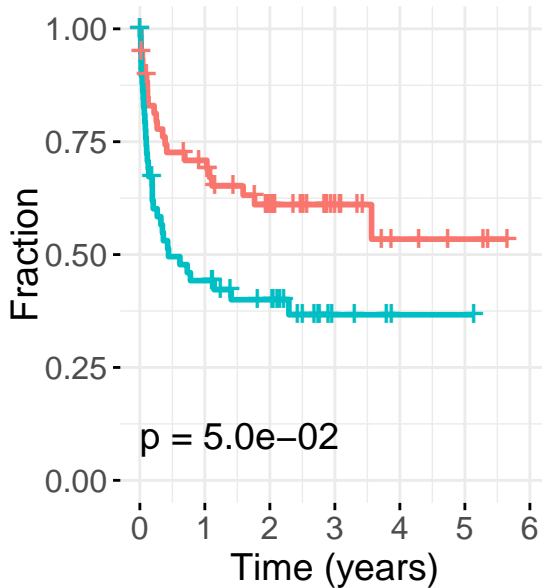
Dabrafenib~ OS

Strata + high + low



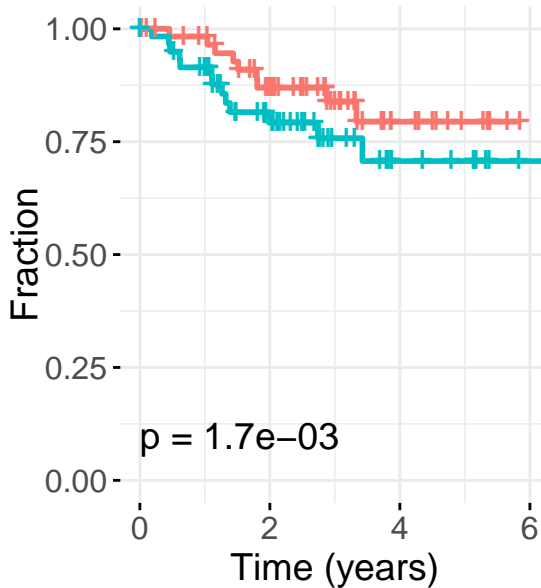
PKI-402~ TTT

Strata + high + low



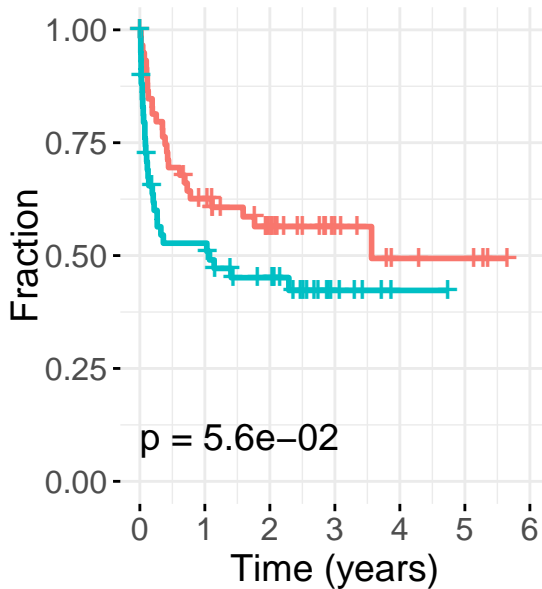
PKI-402~ OS

Strata + high + low



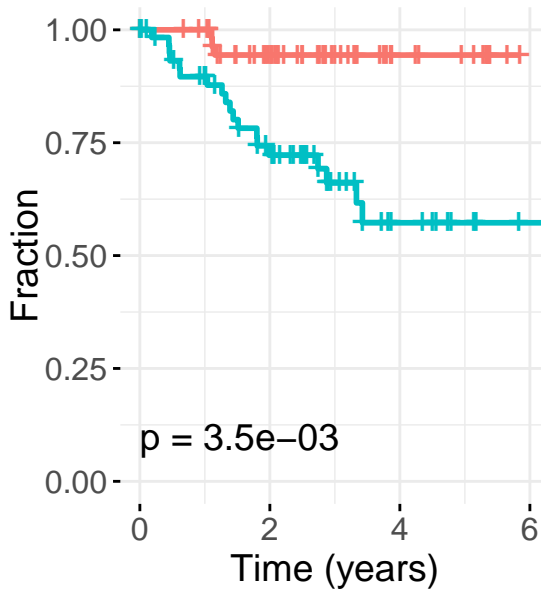
TAE684~ TTT

Strata + high + low



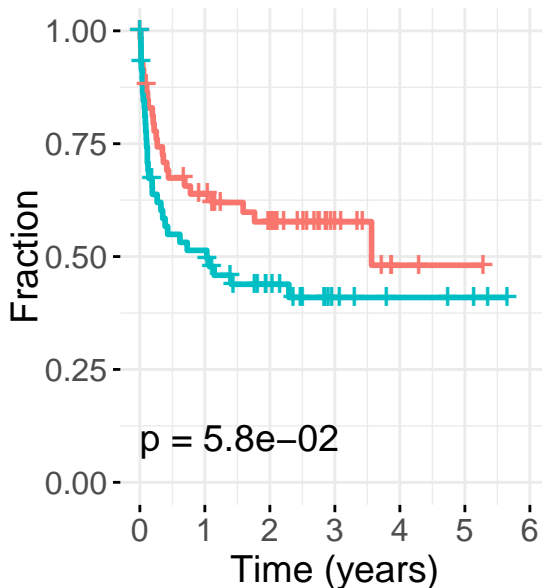
TAE684~ OS

Strata + high + low



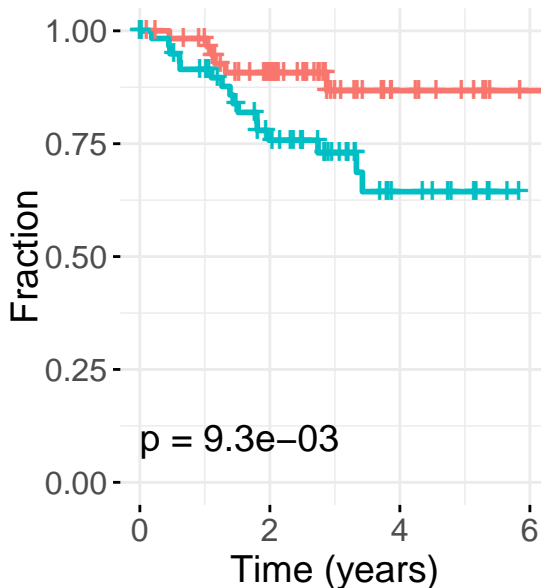
NH125~ TTT

Strata + high + low



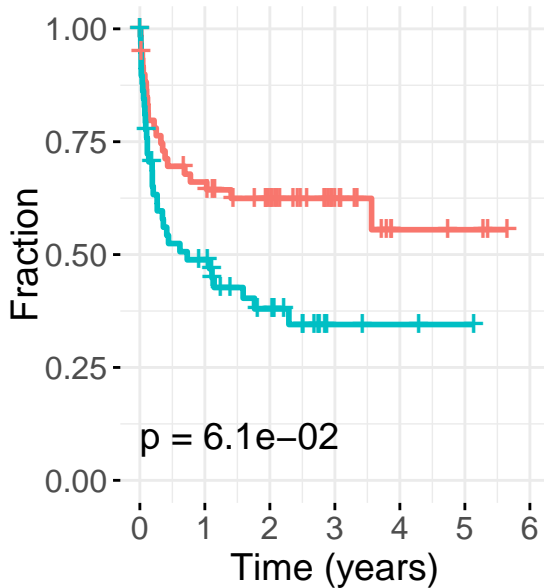
NH125~ OS

Strata + high + low



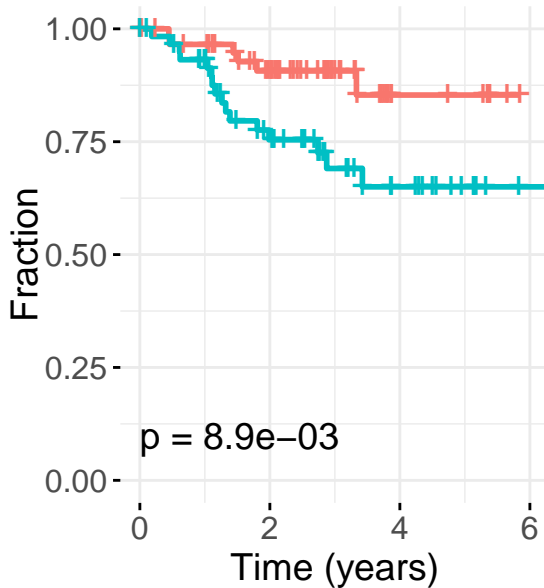
Fingolimod~ TTT

Strata + high + low



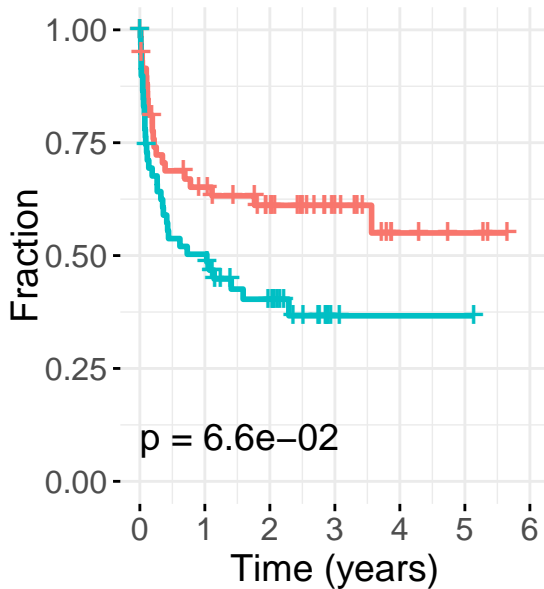
Fingolimod~ OS

Strata + high + low



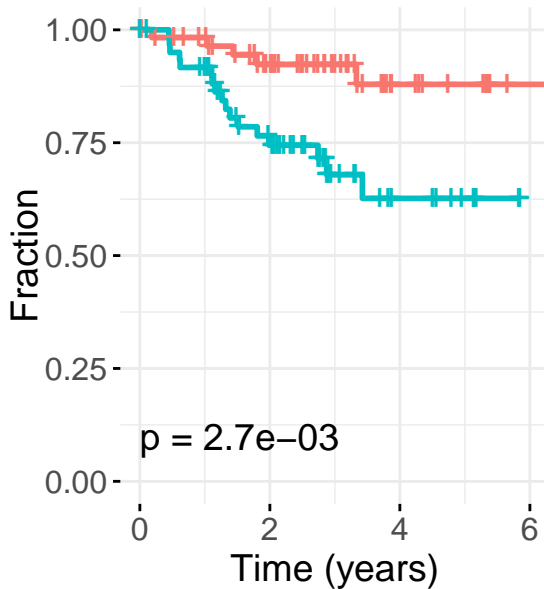
BX-795~ TTT

Strata + high + low



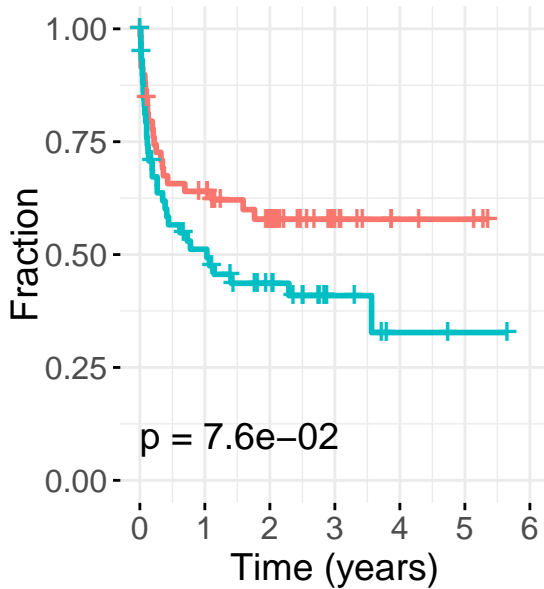
BX-795~ OS

Strata + high + low



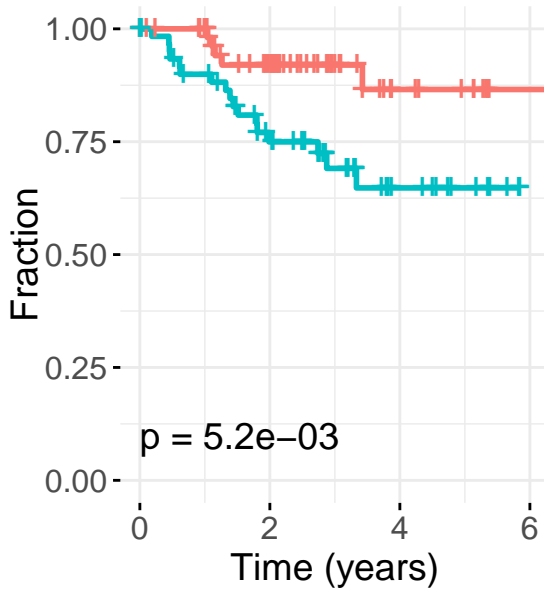
AT9283~ TTT

Strata + high + low



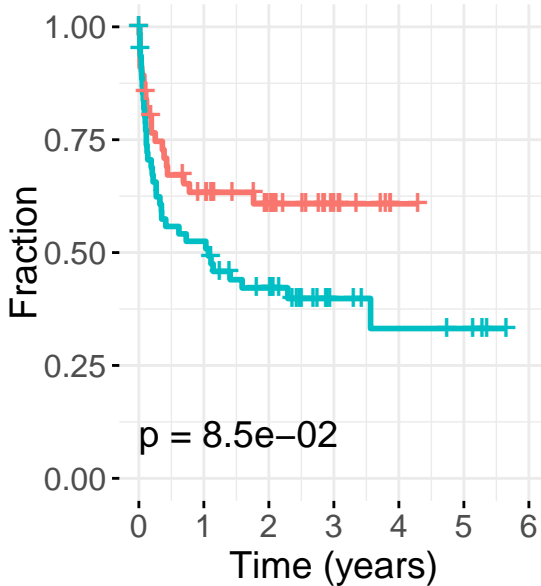
AT9283~ OS

Strata + high + low



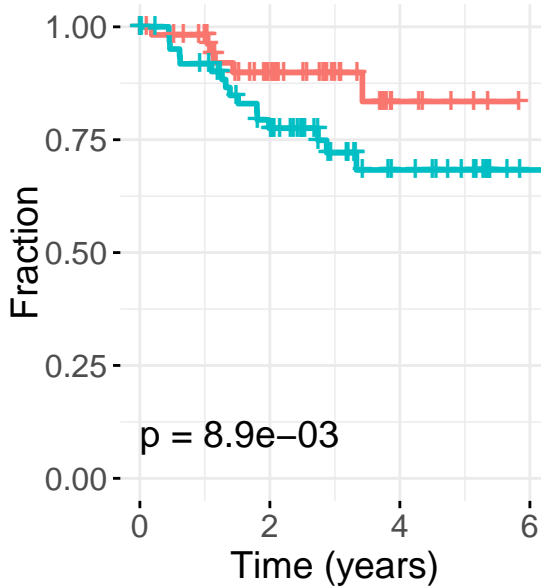
LGK-974~ TTT

Strata + high + low



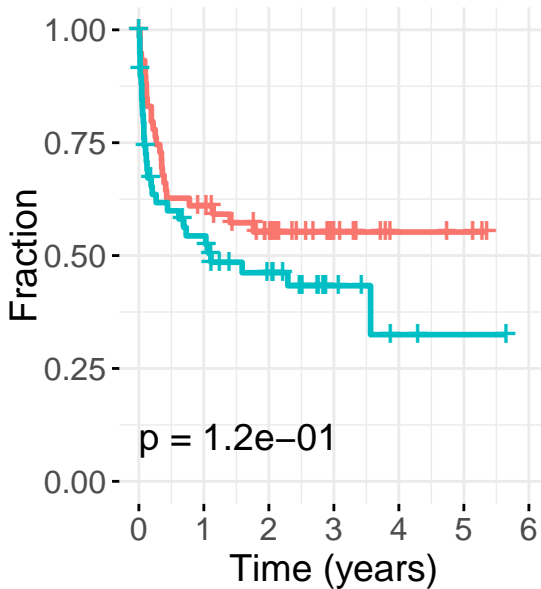
LGK-974~ OS

Strata + high + low



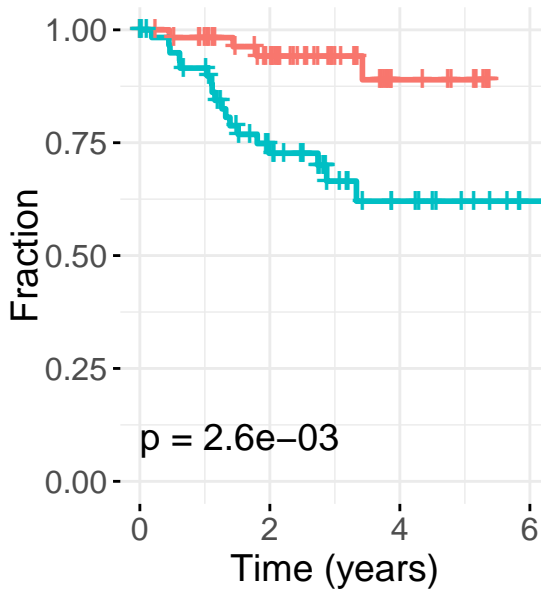
Talazoparib~ TTT

Strata + high + low



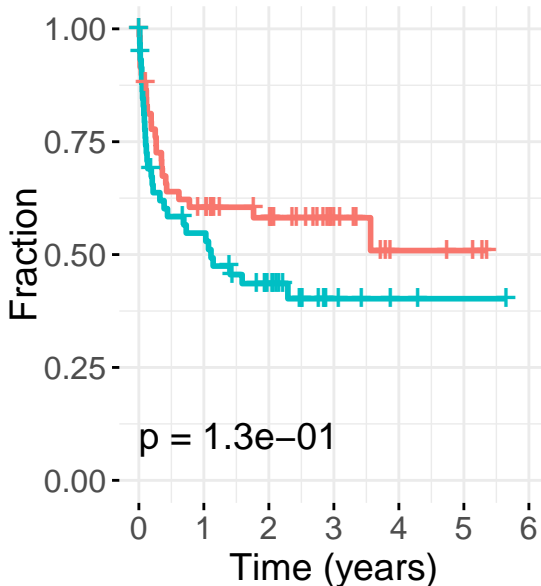
Talazoparib~ OS

Strata + high + low



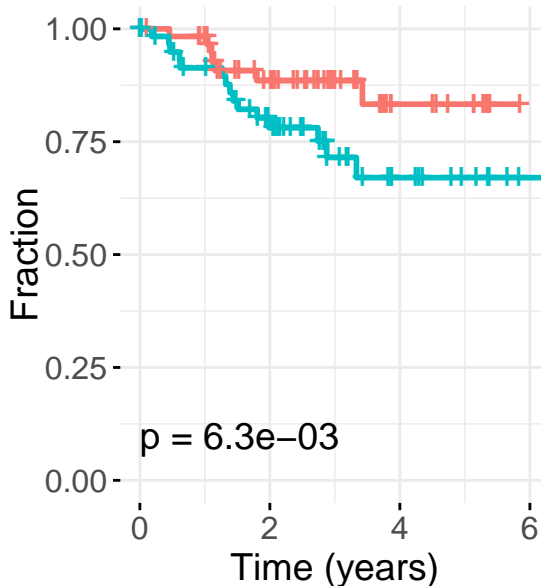
Rabusertib~ TTT

Strata + high + low



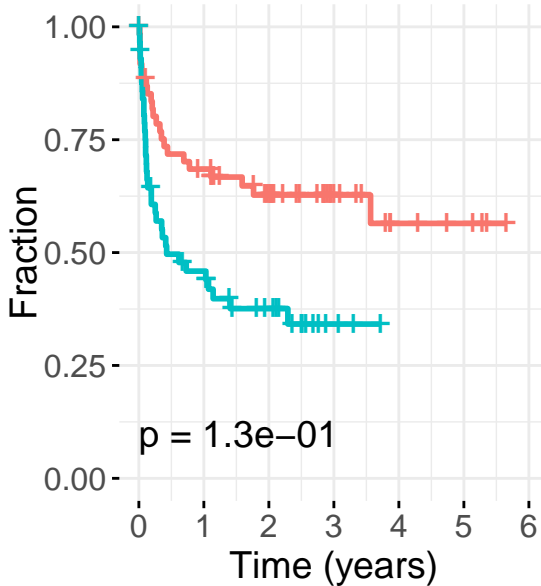
Rabusertib~ OS

Strata + high + low



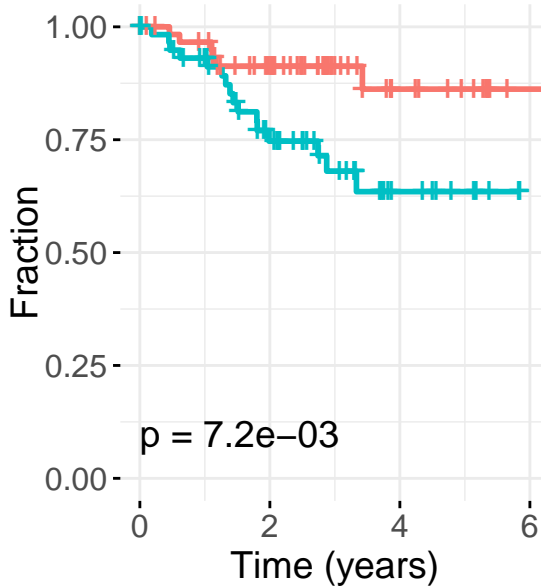
Ribociclib~ TTT

Strata + high + low



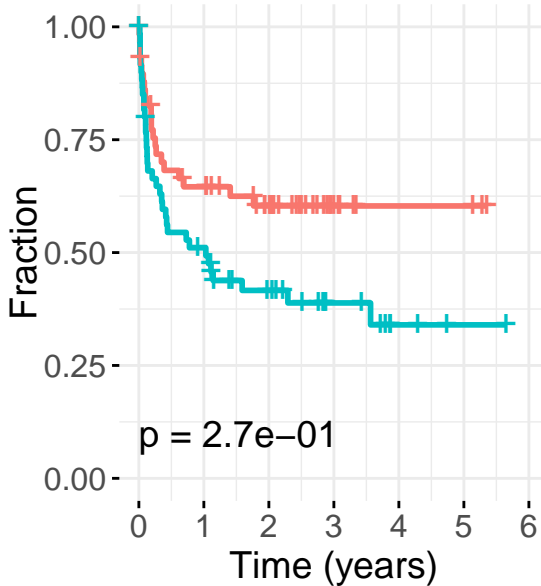
Ribociclib~ OS

Strata + high + low



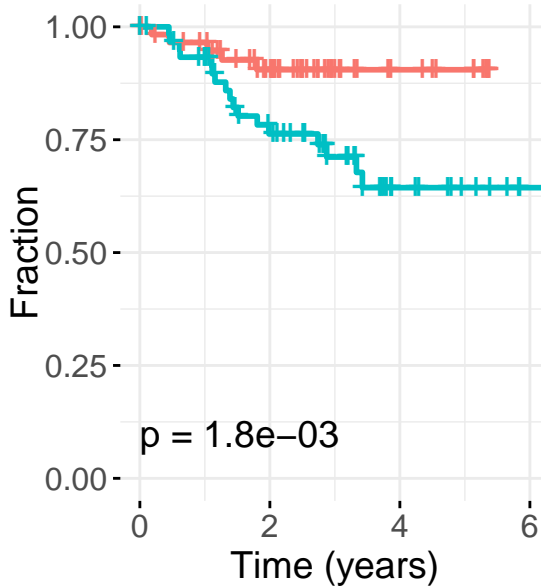
Foretinib~ TTT

Strata + high + low



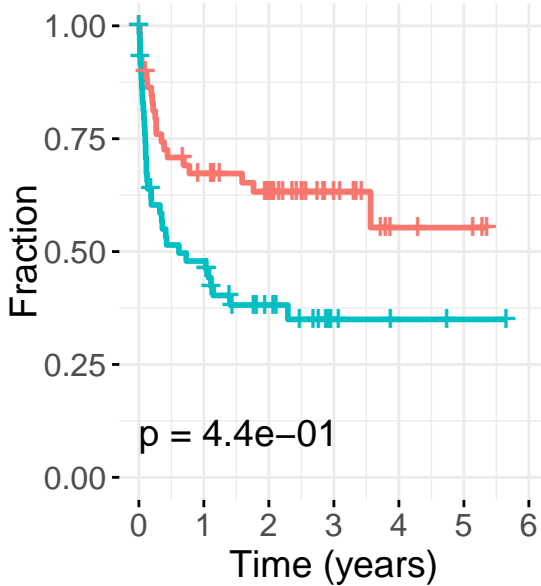
Foretinib~ OS

Strata + high + low



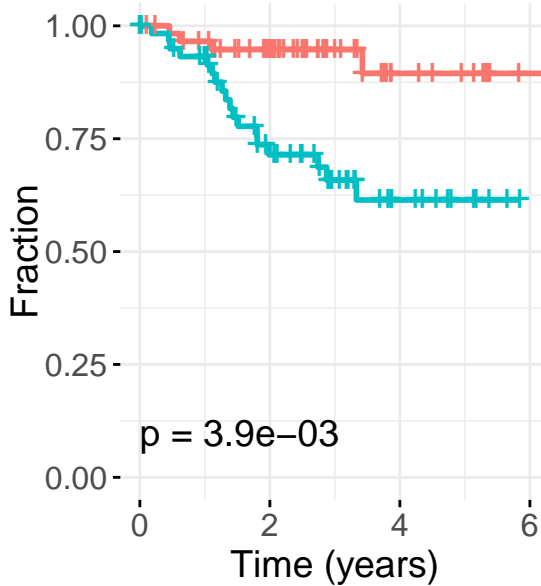
Encorafenib~ TTT

Strata + high + low



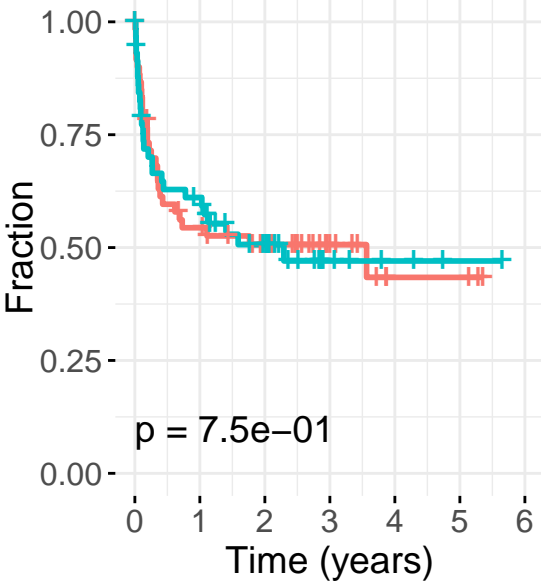
Encorafenib~ OS

Strata + high + low



Rucaparib~ TTT

Strata high low



Rucaparib~ OS

Strata high low

