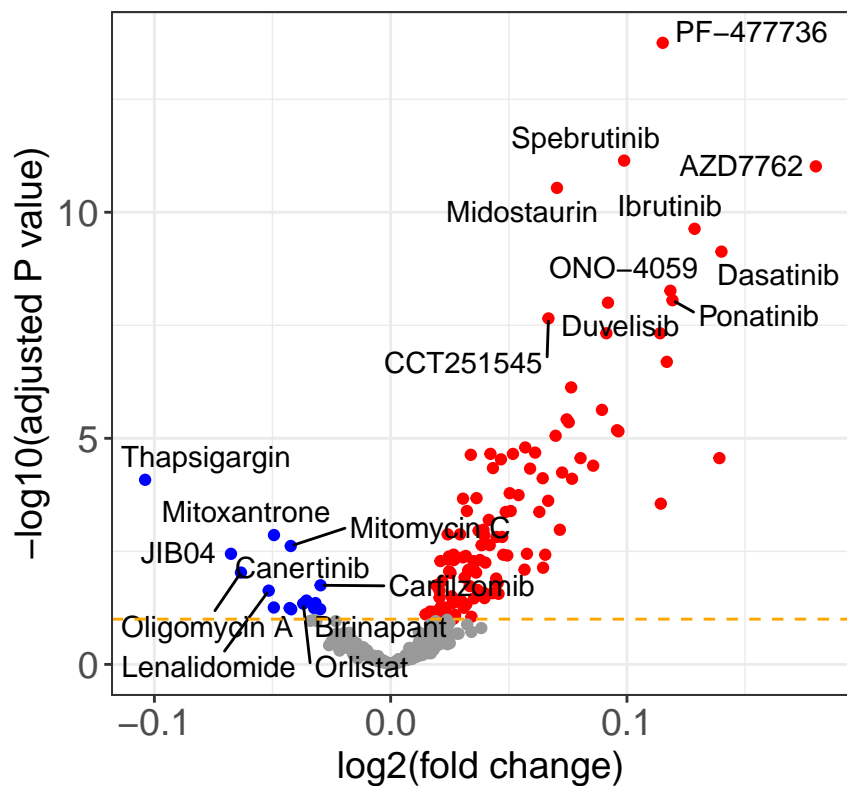
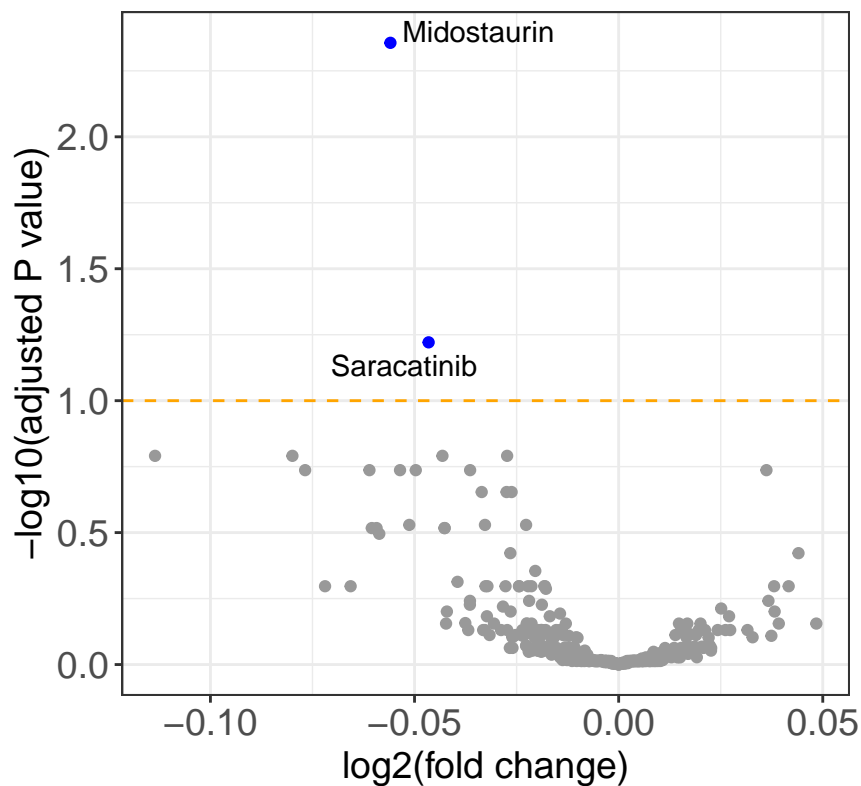
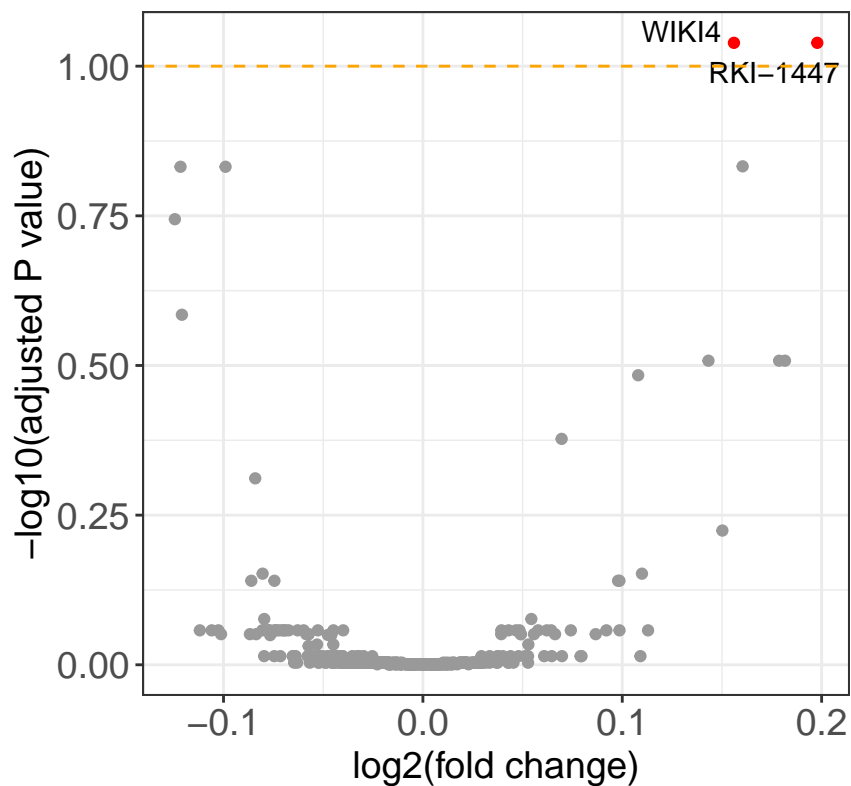


IGHV.status (mutated vs unmutated)

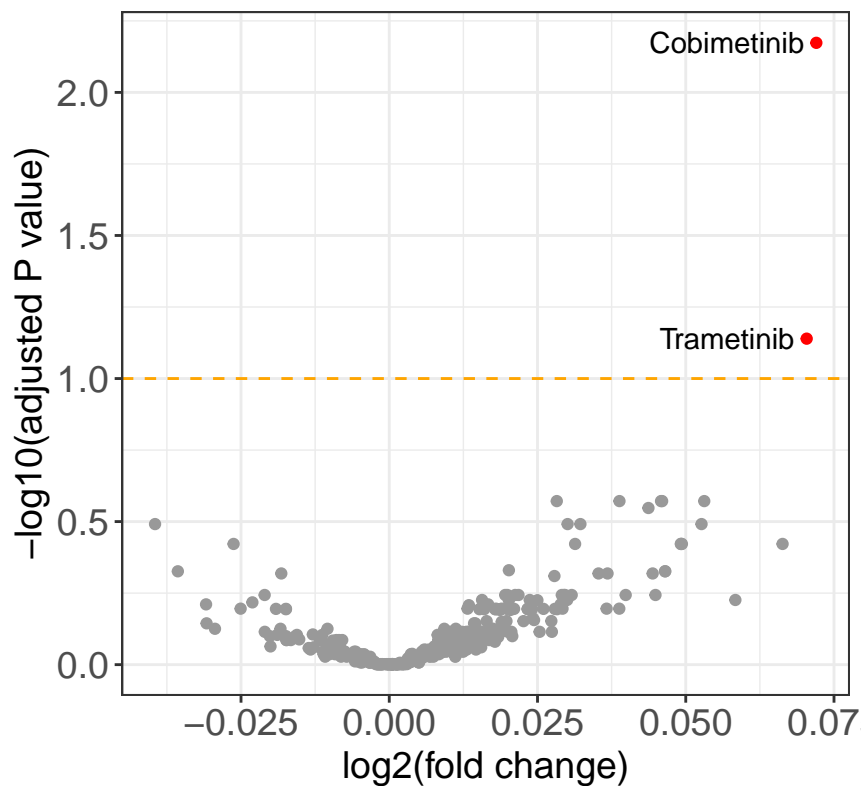
direction ● n.s. ● resistant ● sensitive

del11q (mutated vs unmutated)

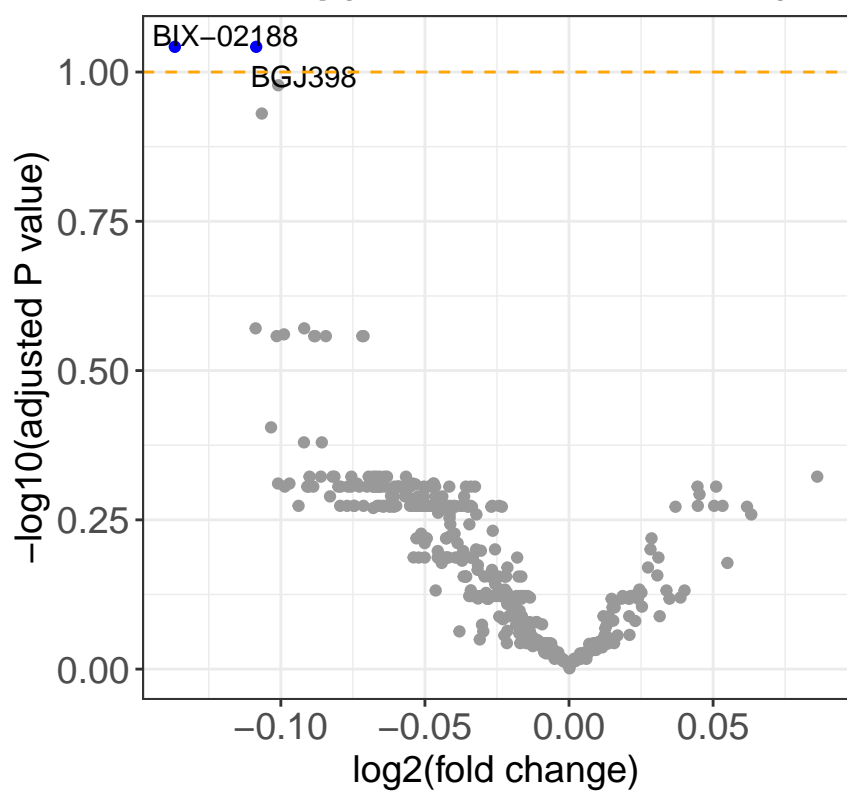
direction ● n.s. ● sensitive

del12q (mutated vs unmutated)

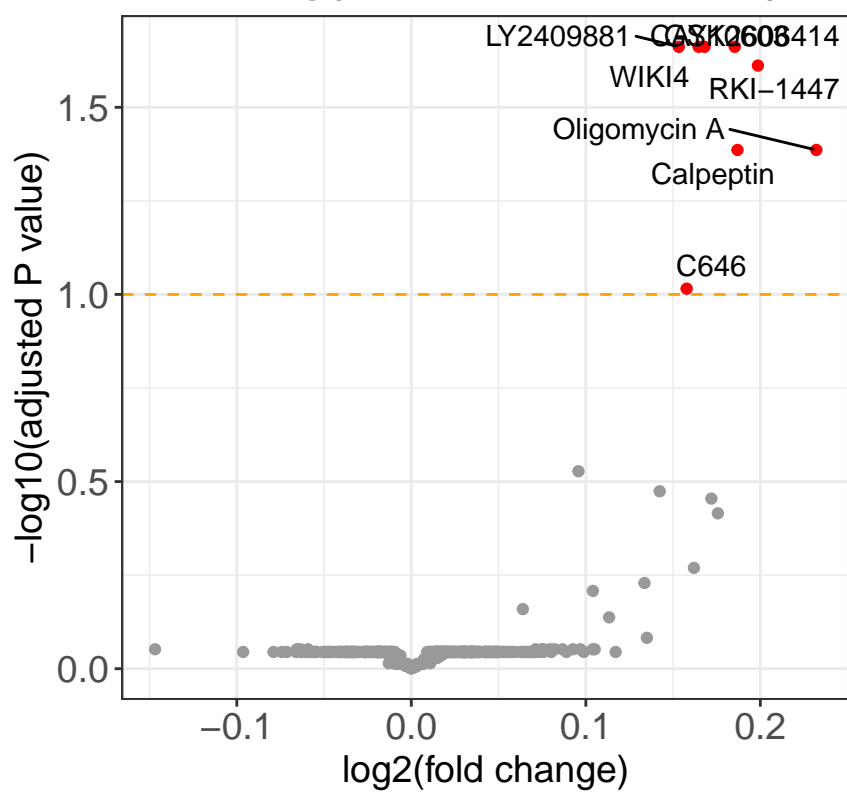
direction ● n.s. ● resistant

del13q (mutated vs unmutated)

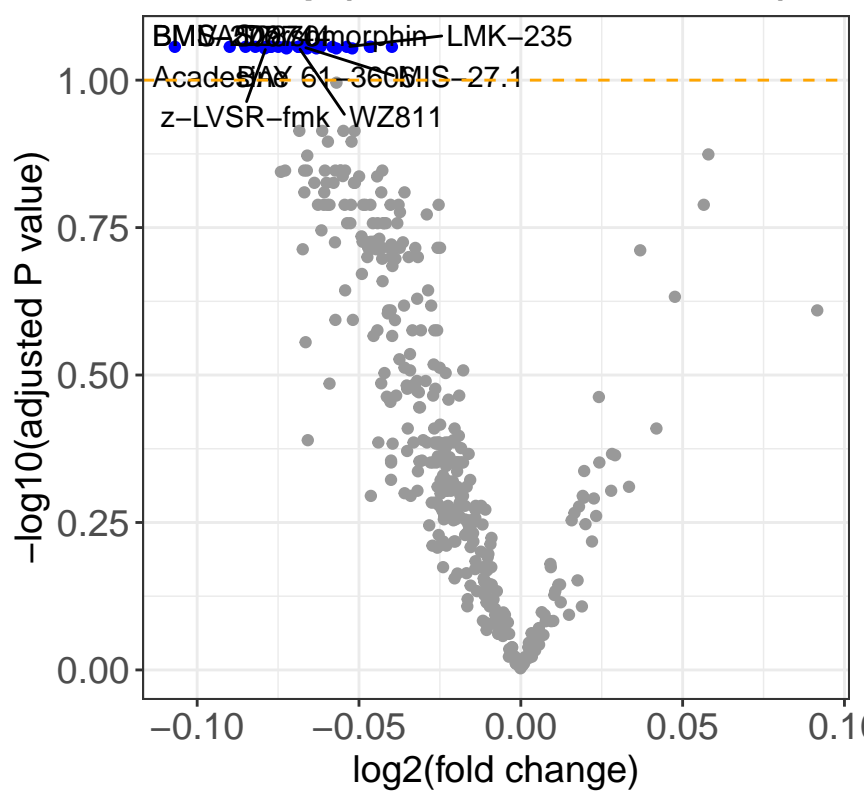
direction ● n.s. ● resistant

del14q (mutated vs unmutated)

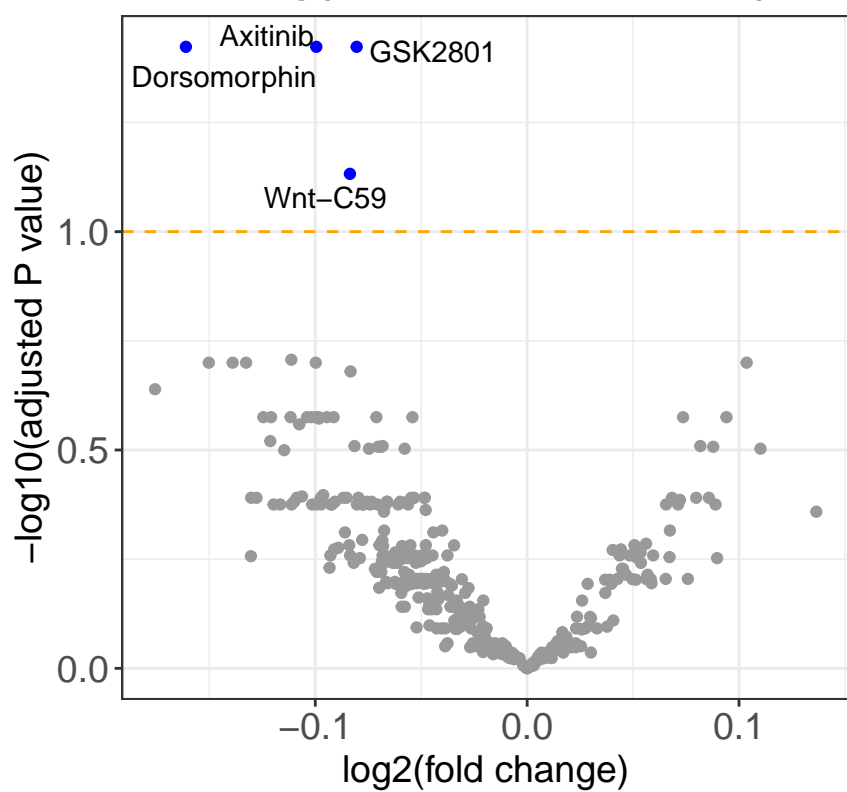
direction ● n.s. ● sensitive

del15q (mutated vs unmutated)

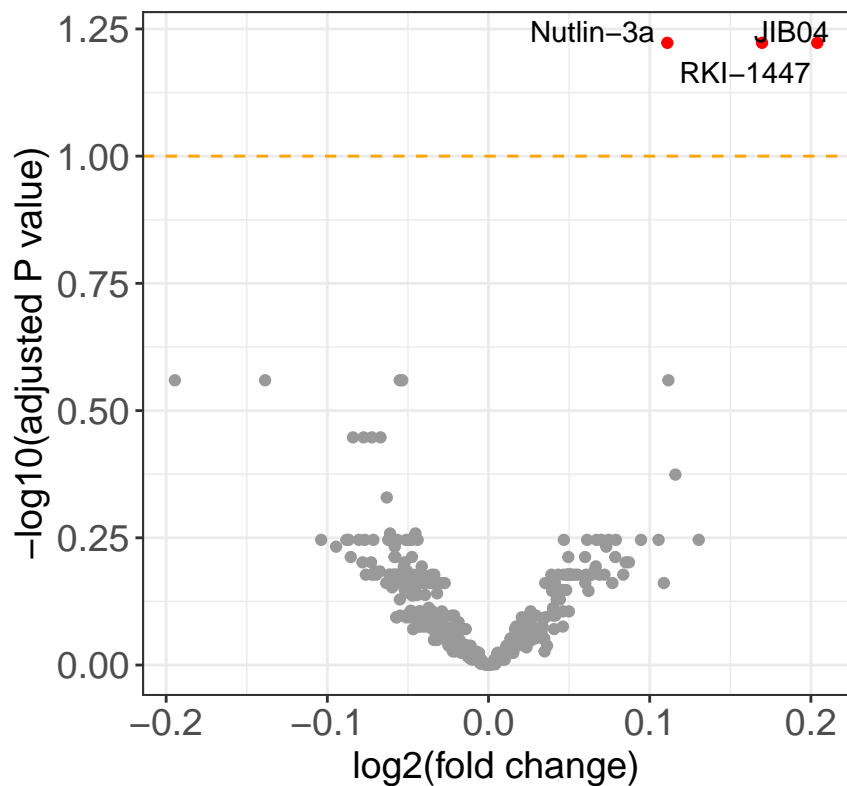
direction ● n.s. ● resistant

del17p (mutated vs unmutated)

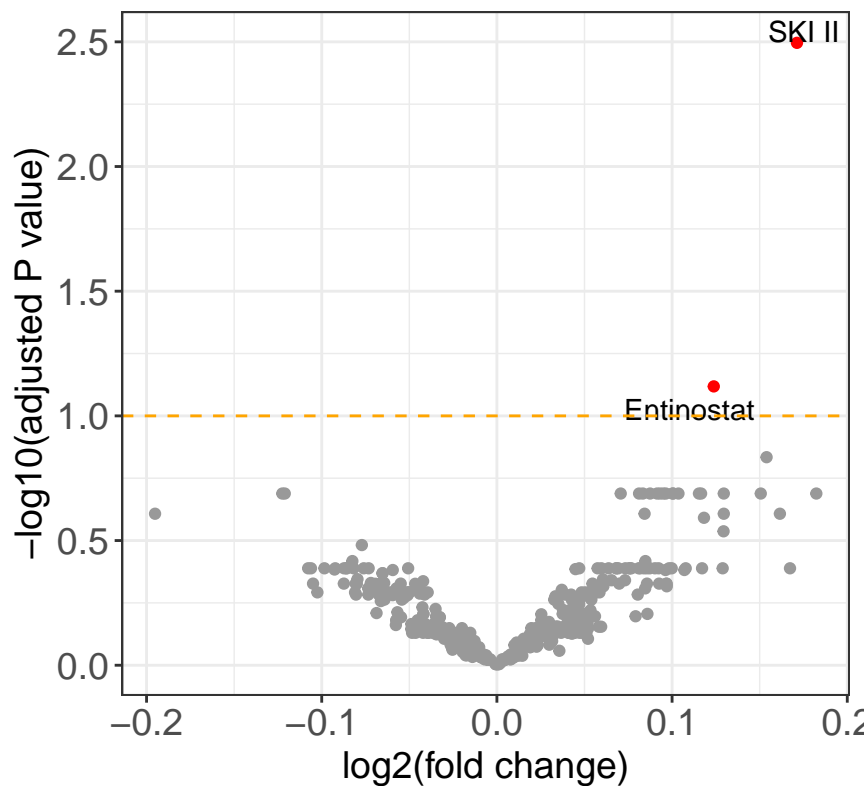
direction ● n.s. ● sensitive

del3q (mutated vs unmutated)

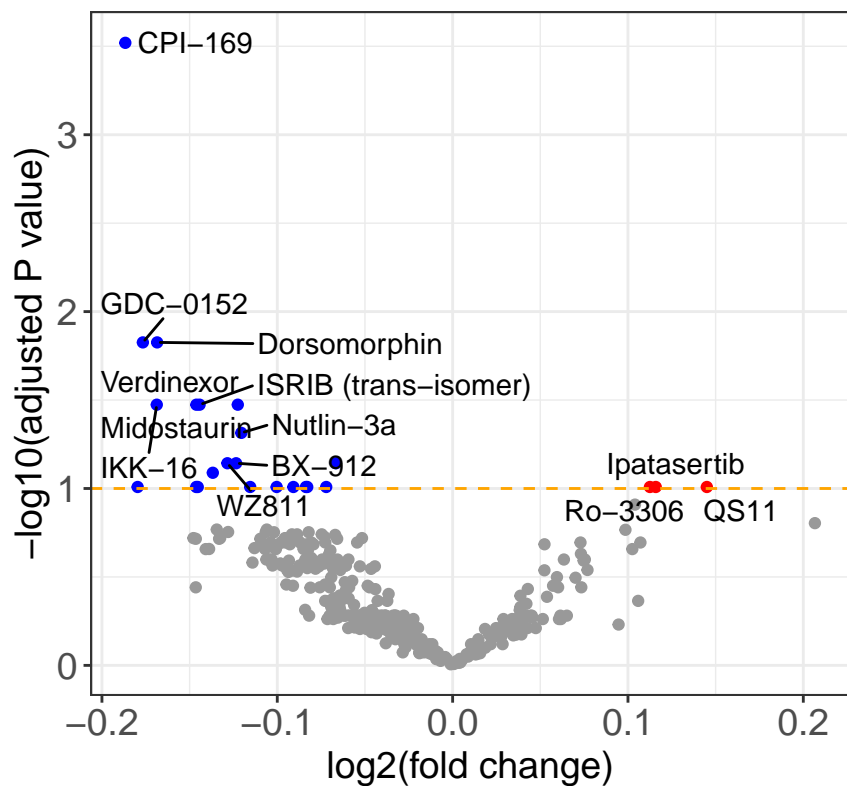
direction ● n.s. ● sensitive

del9p (mutated vs unmutated)

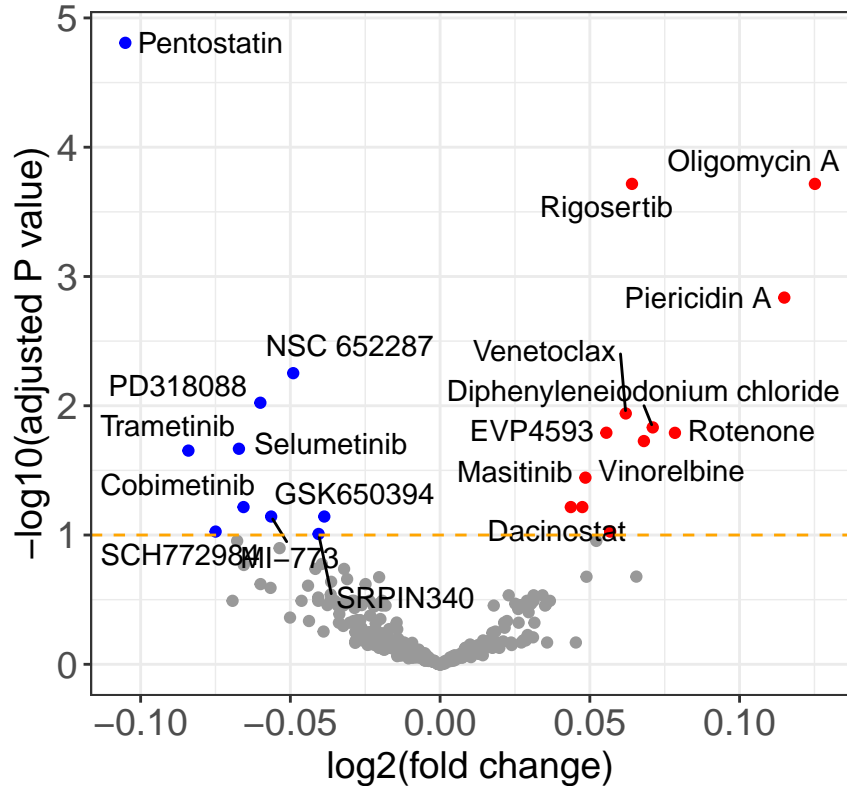
direction ● n.s. ● resistant

gain18p (mutated vs unmutated)

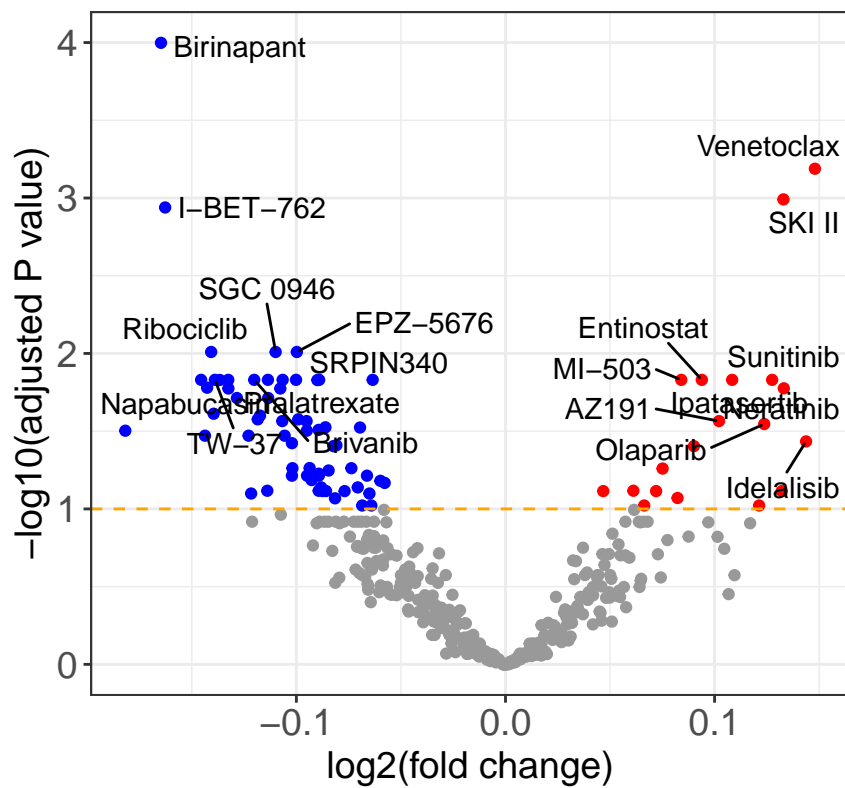
direction ● n.s. ● resistant

gain5p (mutated vs unmutated)

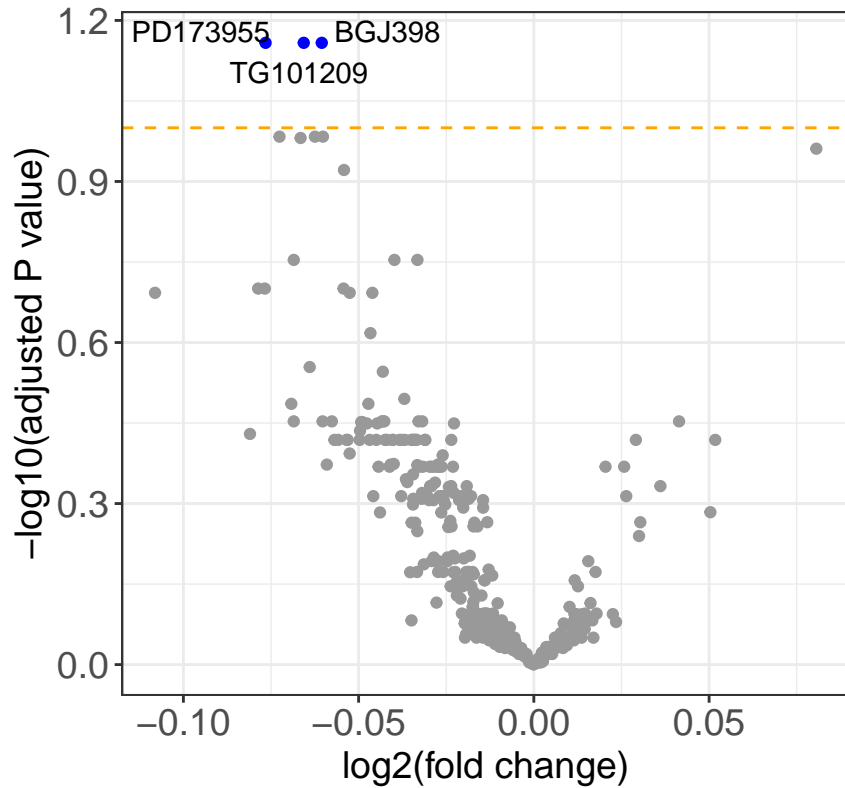
direction ● n.s. ● resistant ● sensitive

trisomy12 (mutated vs unmutated)

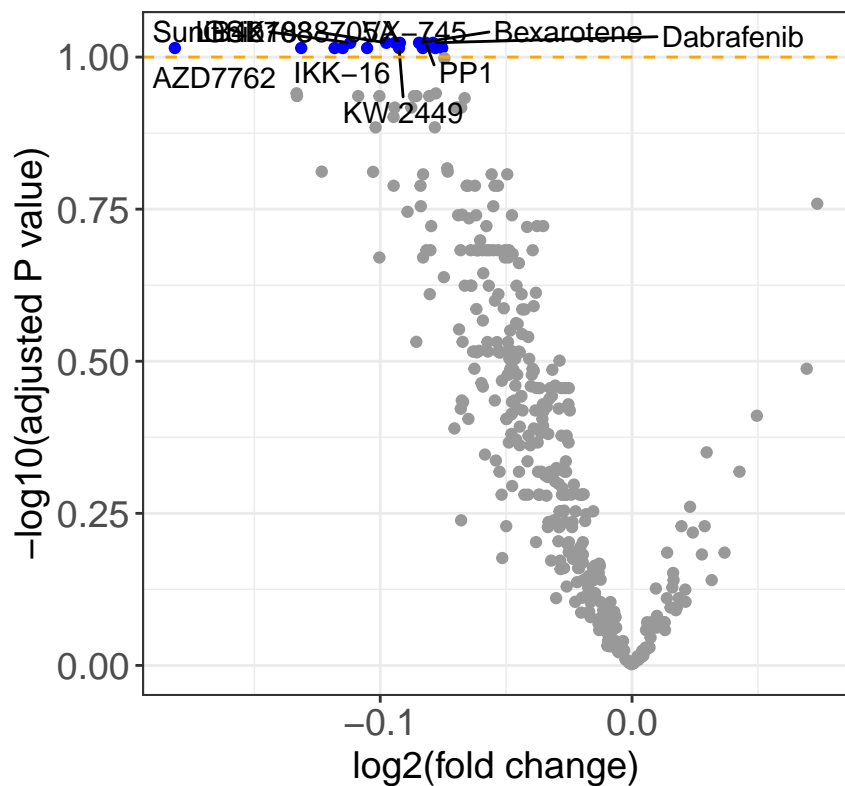
direction ● n.s. ● resistant ● sensitive

trisomy19 (mutated vs unmutated)

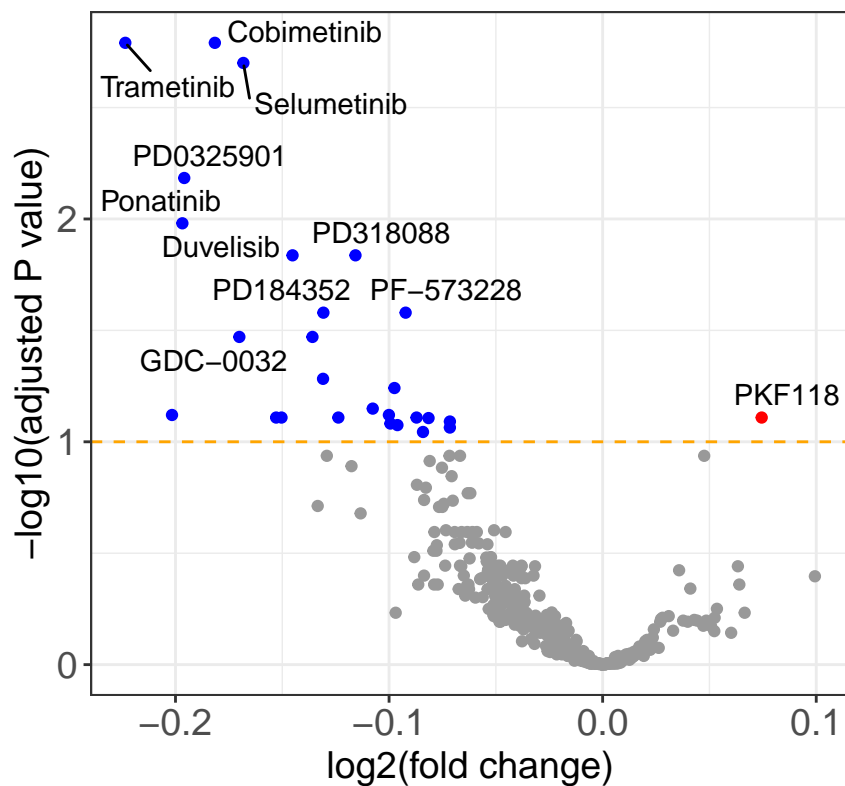
direction ● n.s. ● resistant ● sensitive

NOTCH1 (mutated vs unmutated)

direction ● n.s. ● sensitive

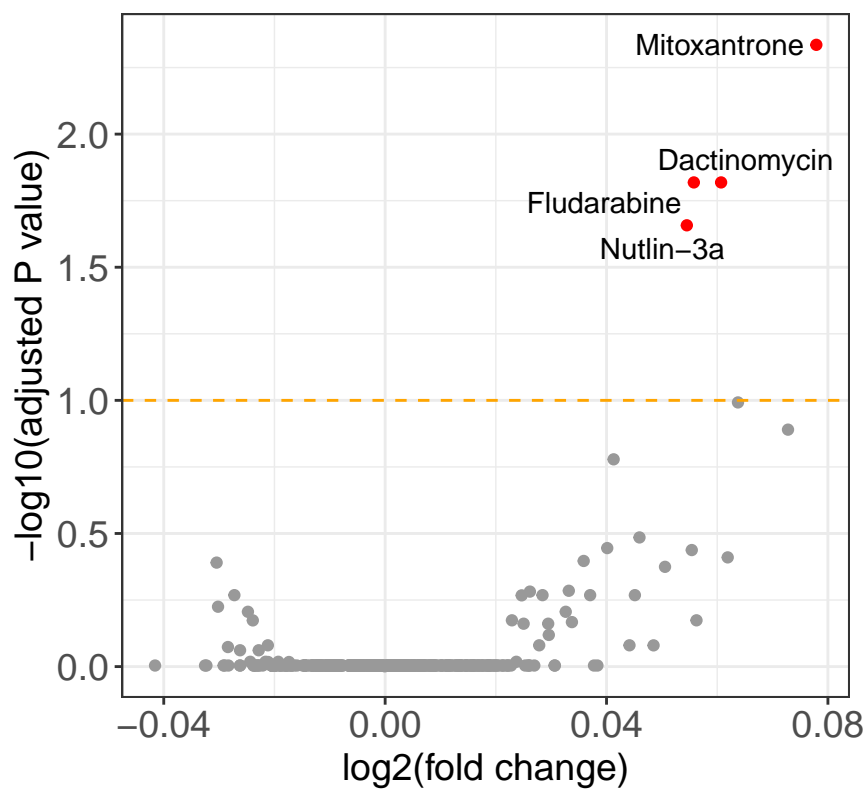
BRAF (mutated vs unmutated)

direction ● n.s. ● sensitive

KRAS (mutated vs unmutated)

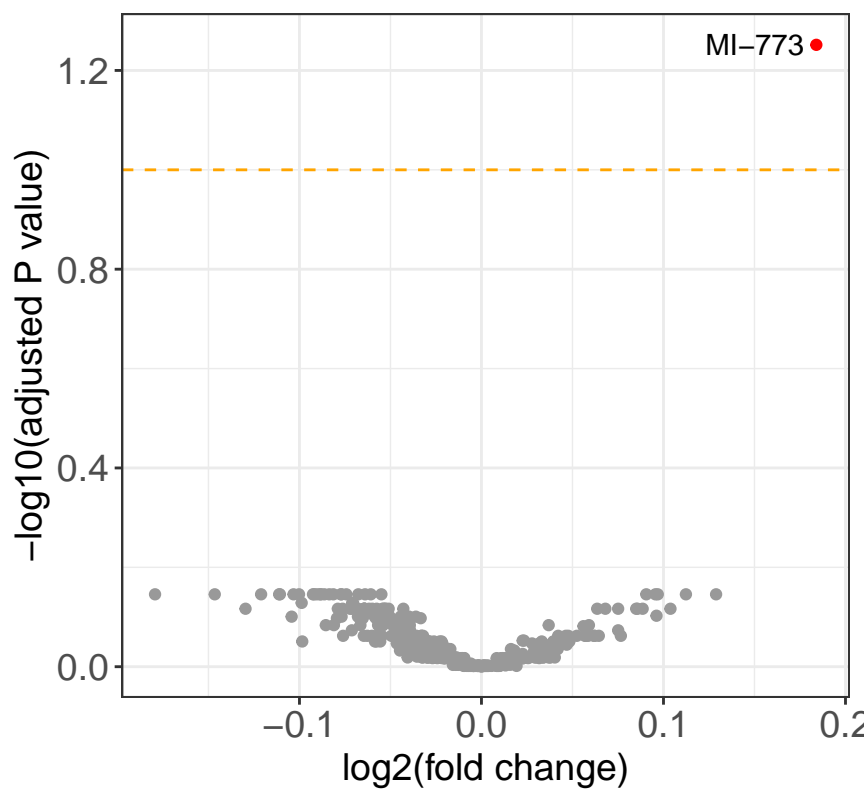
direction ● n.s. ● resistant ● sensitive

TP53 (mutated vs unmutated)



direction ● n.s. ● resistant

UMODL1 (mutated vs unmutated)



direction ● n.s. ● resistant