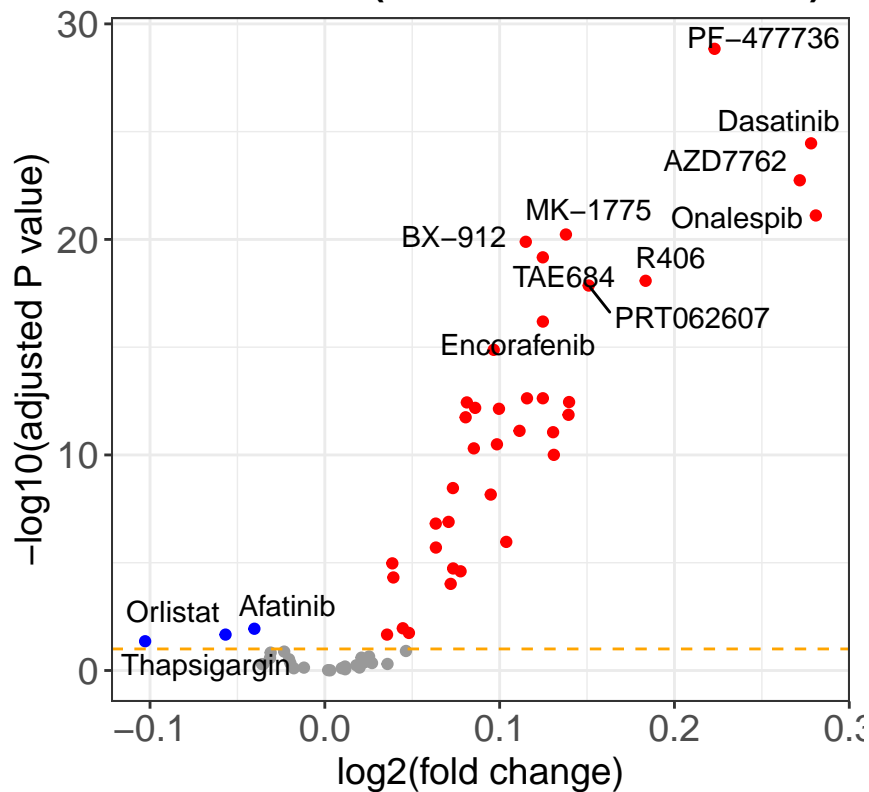
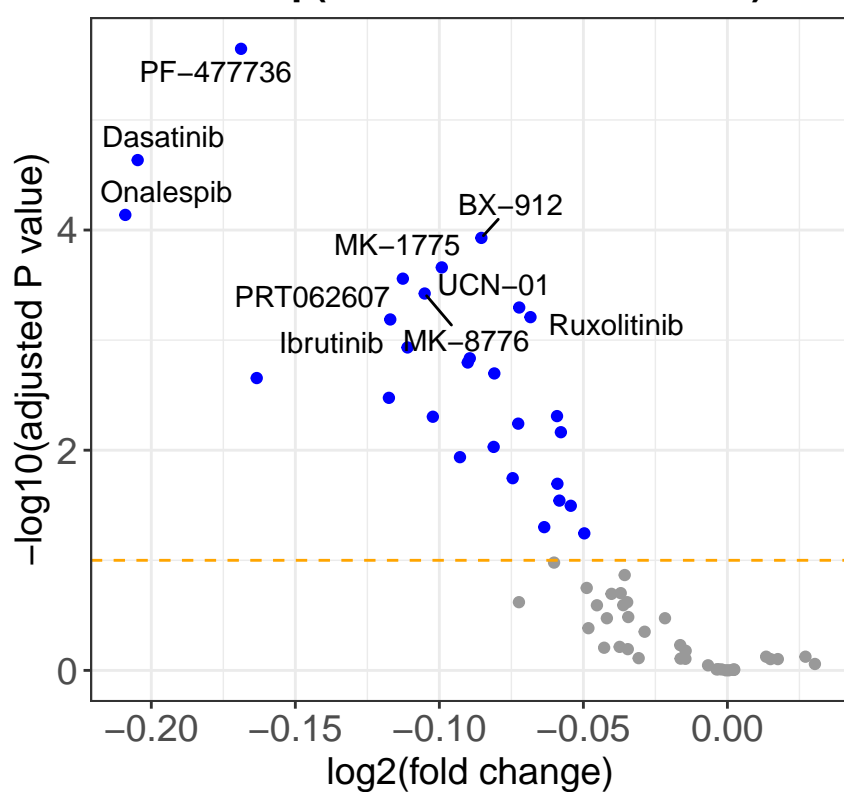
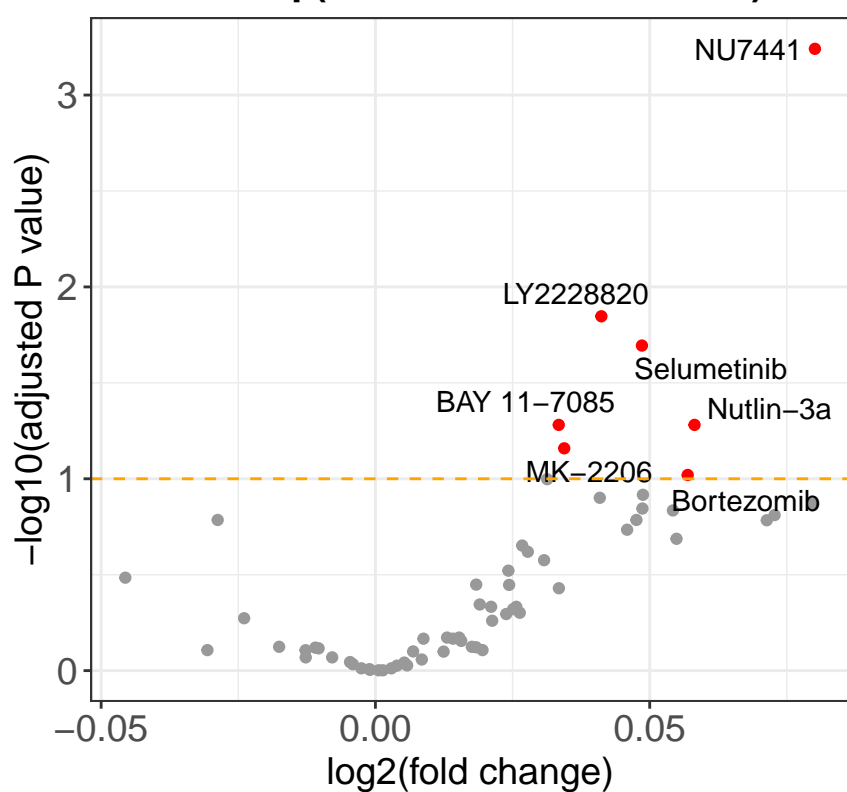


IGHV.status (mutated vs unmutated)

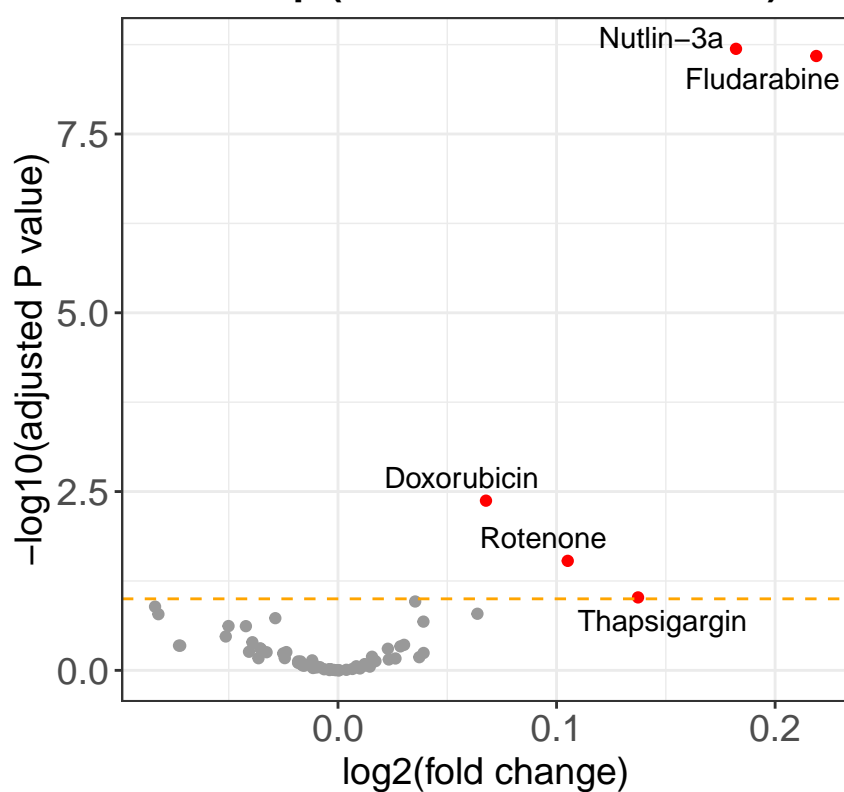
direction ● n.s. ● resistant ● sensitive

del11q (mutated vs unmutated)

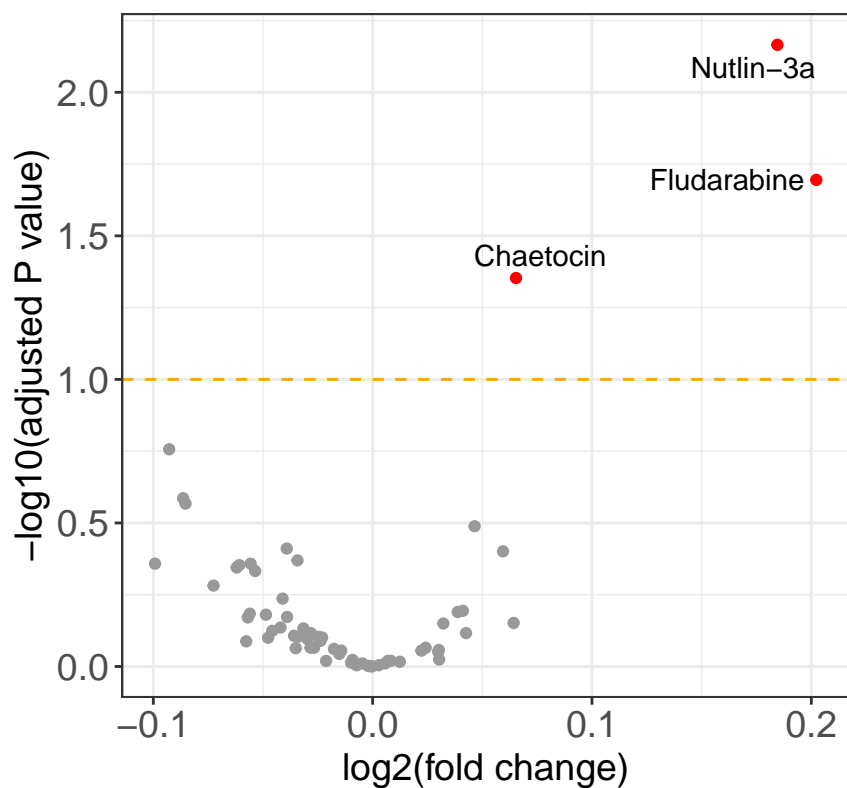
direction ● n.s. ● resistant ● sensitive

del13q (mutated vs unmutated)

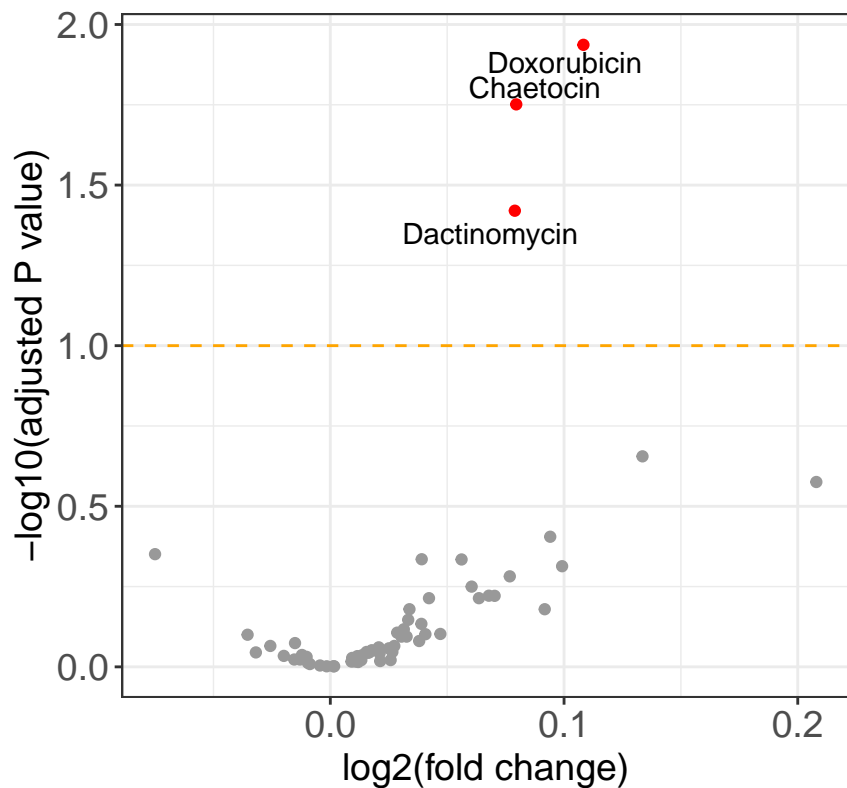
direction ● n.s. ● resistant ● sensitive

del17p (mutated vs unmutated)

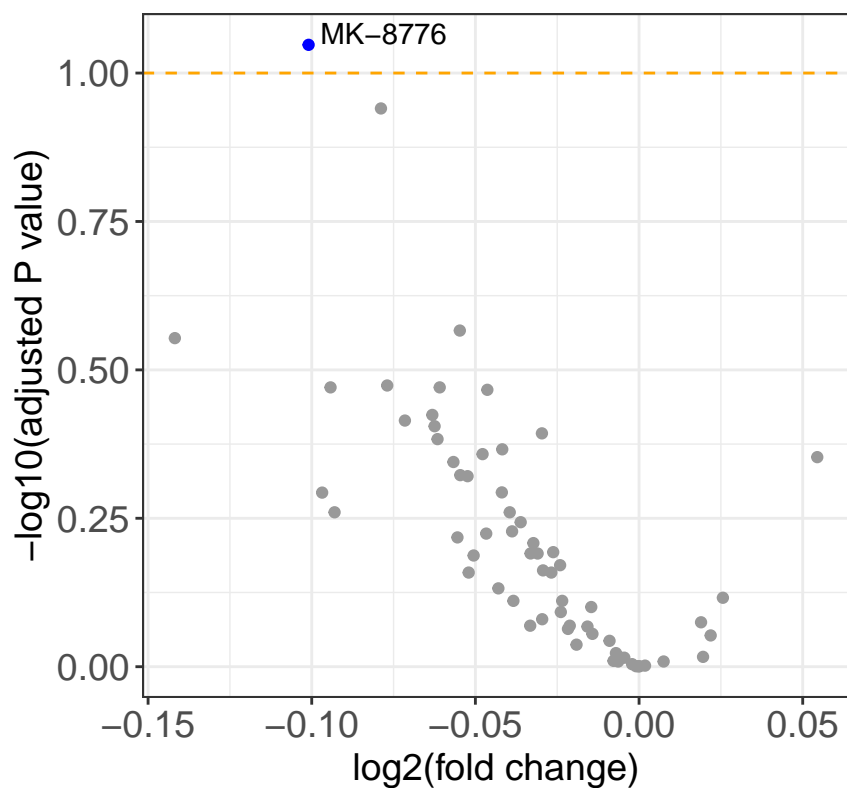
direction ● n.s. ● resistant ● sensitive

del9p (mutated vs unmutated)

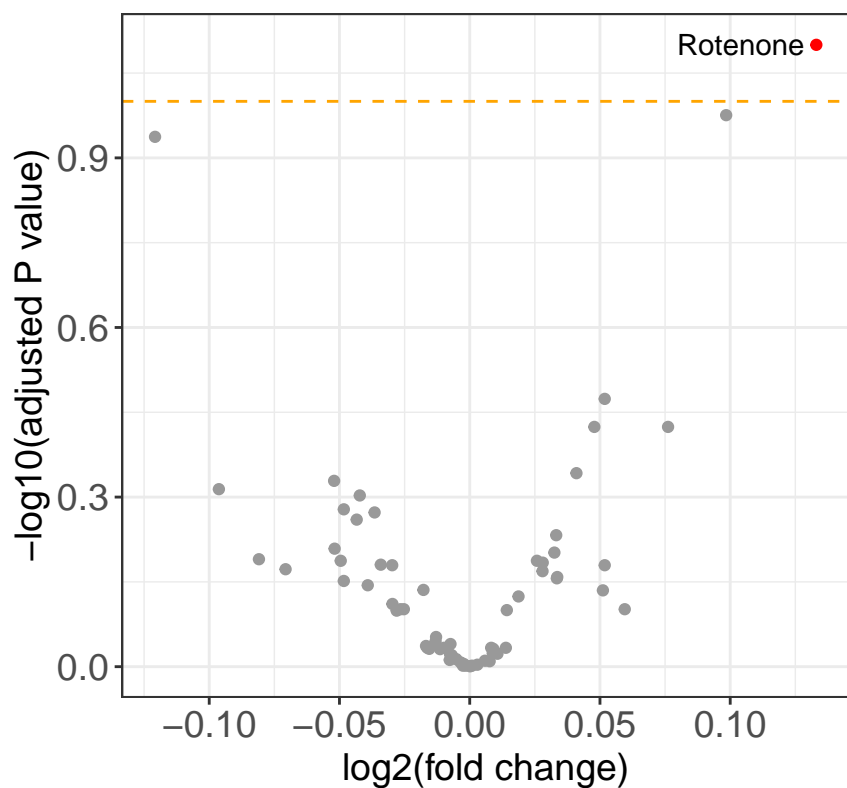
direction ● n.s. ● resistant ● sensitive

gain17q (mutated vs unmutated)

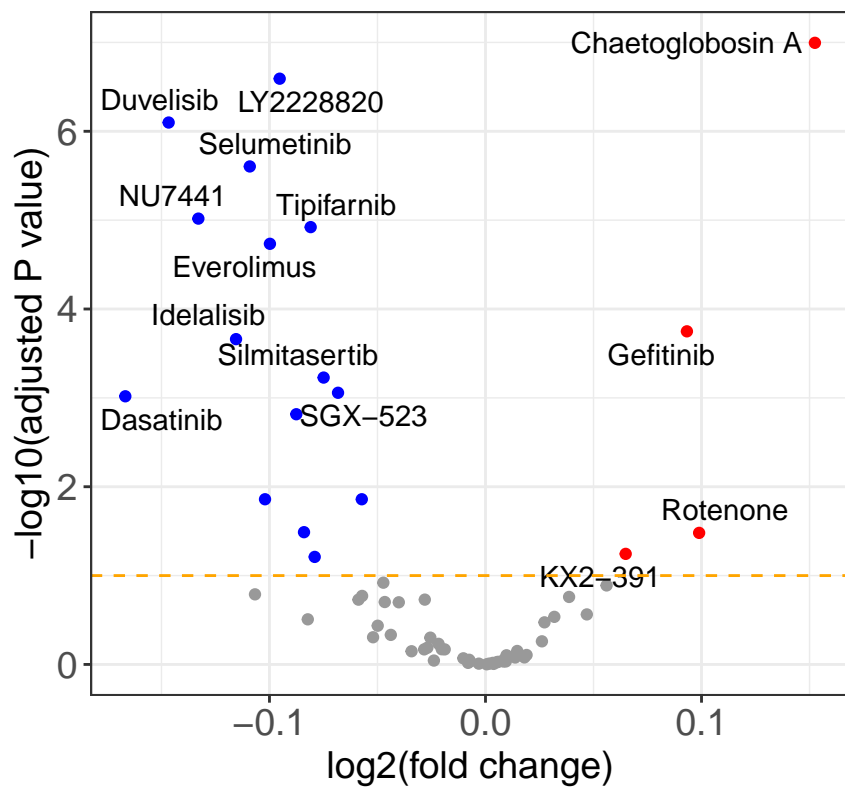
direction ● n.s. ● resistant ● sensitive

gain2p (mutated vs unmutated)

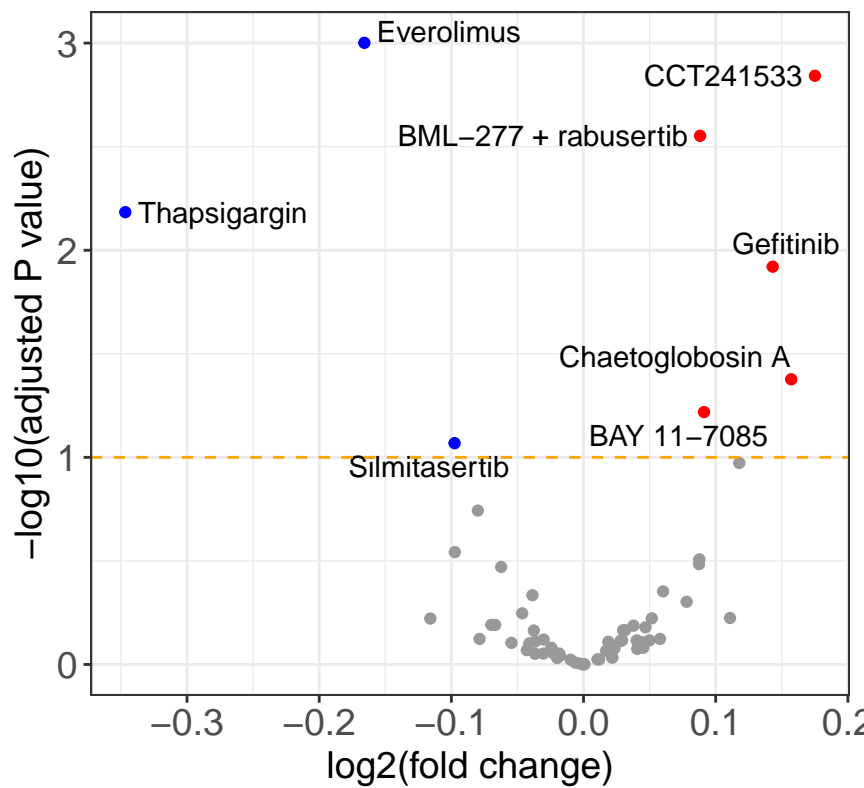
direction ● n.s. ● resistant ● sensitive

gain8q (mutated vs unmutated)

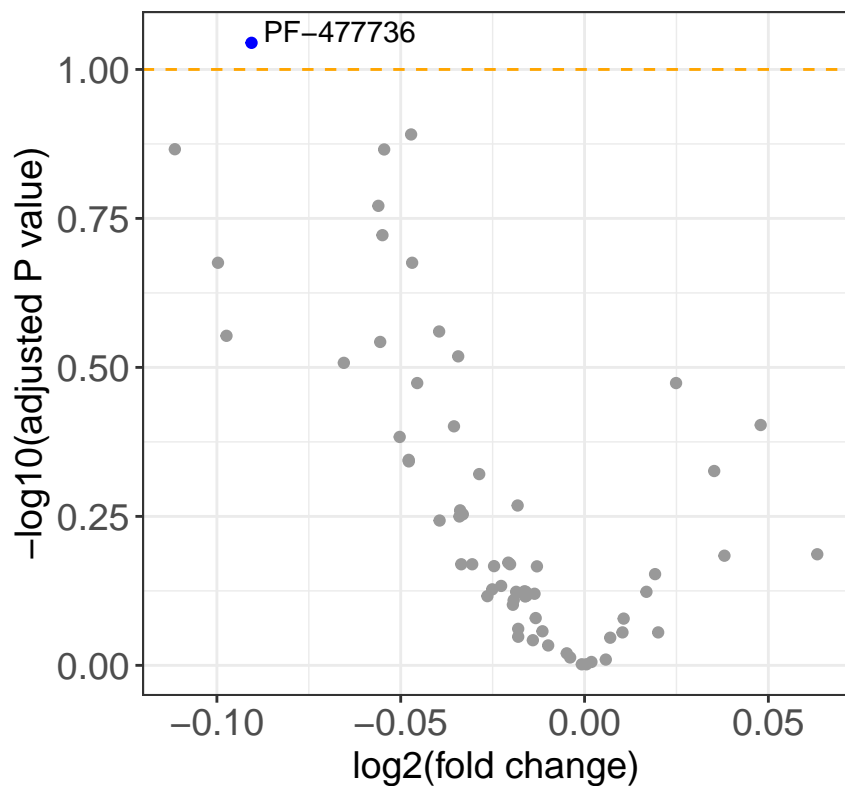
direction ● n.s. ● resistant ● sensitive

trisomy12 (mutated vs unmutated)

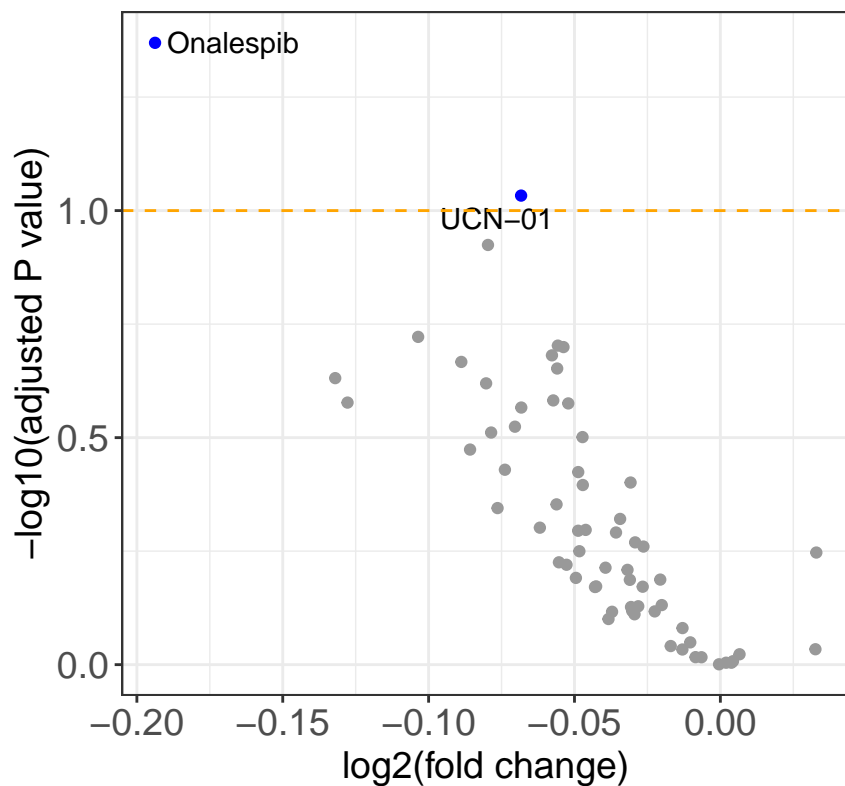
direction ● n.s. ● resistant ● sensitive

trisomy19 (mutated vs unmutated)

direction ● n.s. ● resistant ● sensitive

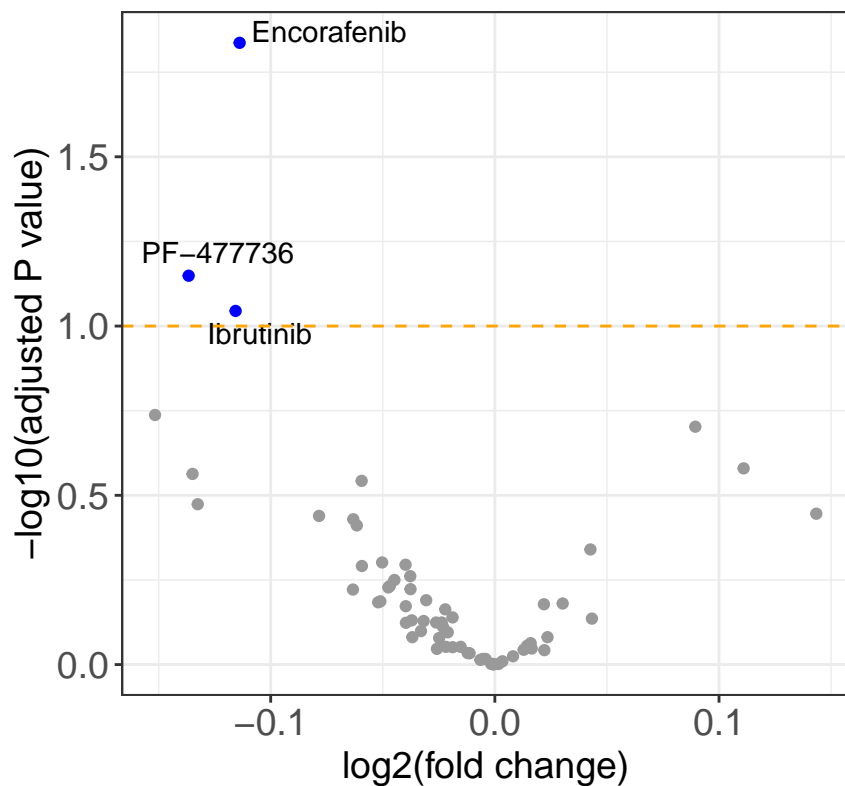
NOTCH1 (mutated vs unmutated)

direction ● n.s. ● resistant ● sensitive

ATM (mutated vs unmutated)

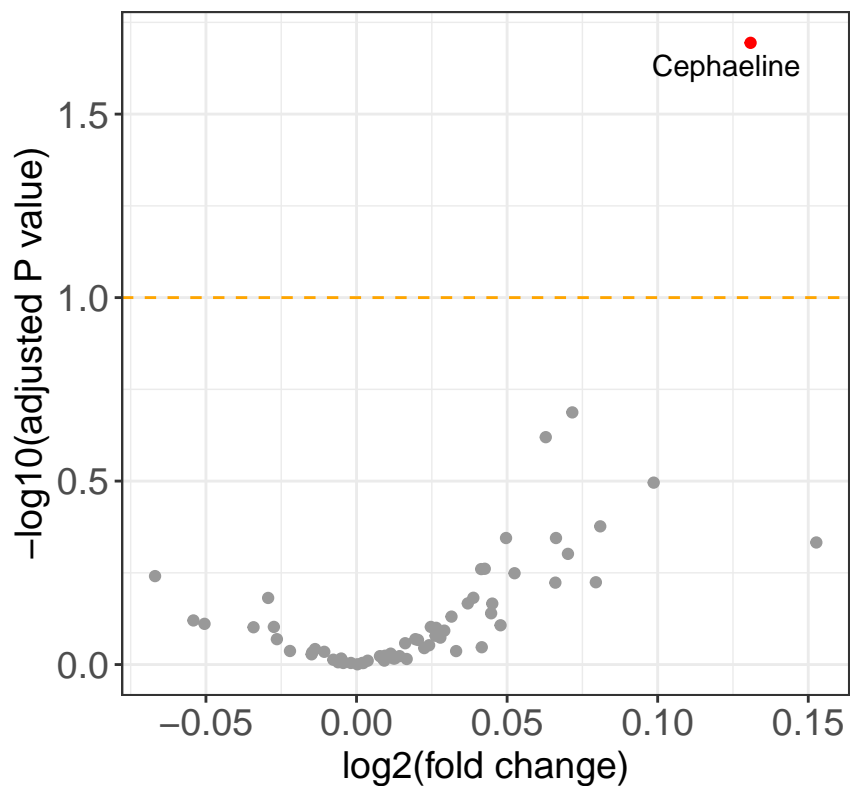
direction ● n.s. ● resistant ● sensitive

BRAF (mutated vs unmutated)



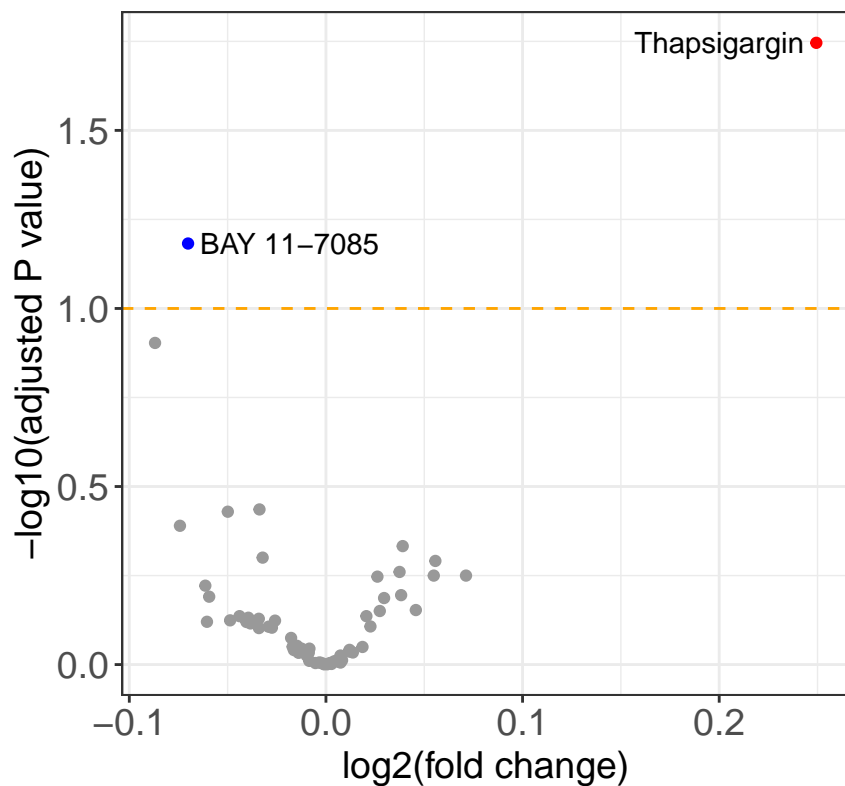
direction ● n.s. ● resistant ● sensitive

EGR2 (mutated vs unmutated)



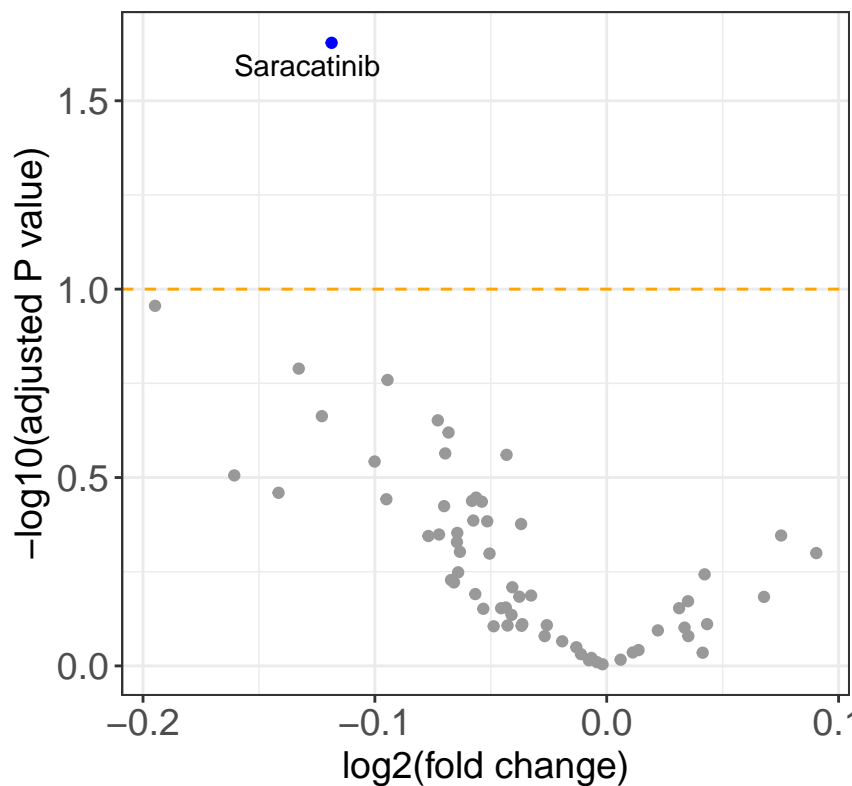
direction ● n.s. ● resistant ● sensitive

KRAS (mutated vs unmutated)



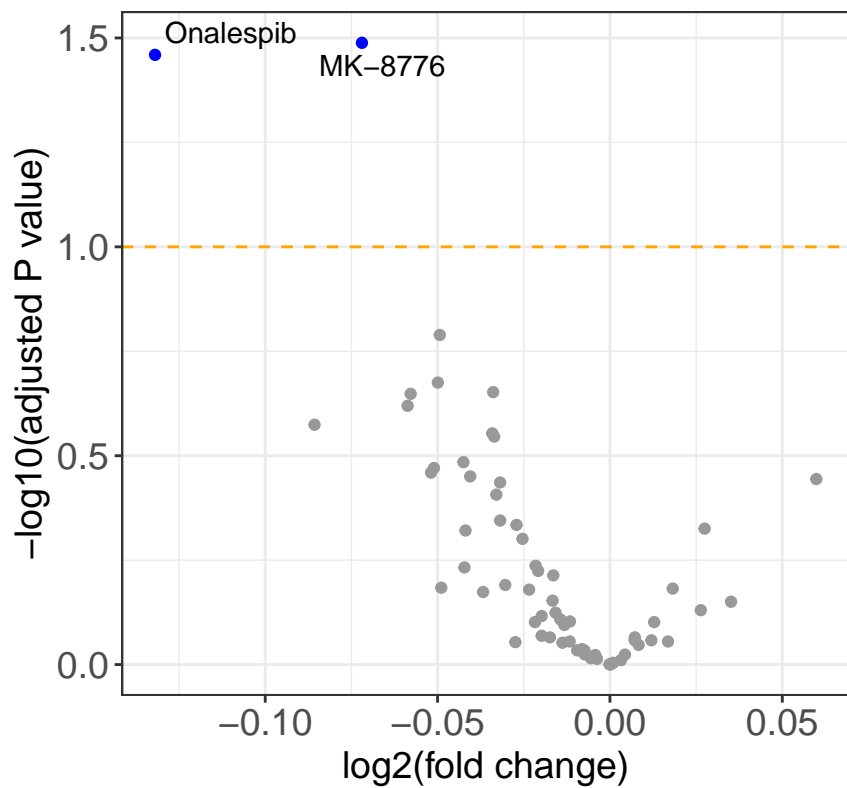
direction ● n.s. ● resistant ● sensitive

MED12 (mutated vs unmutated)



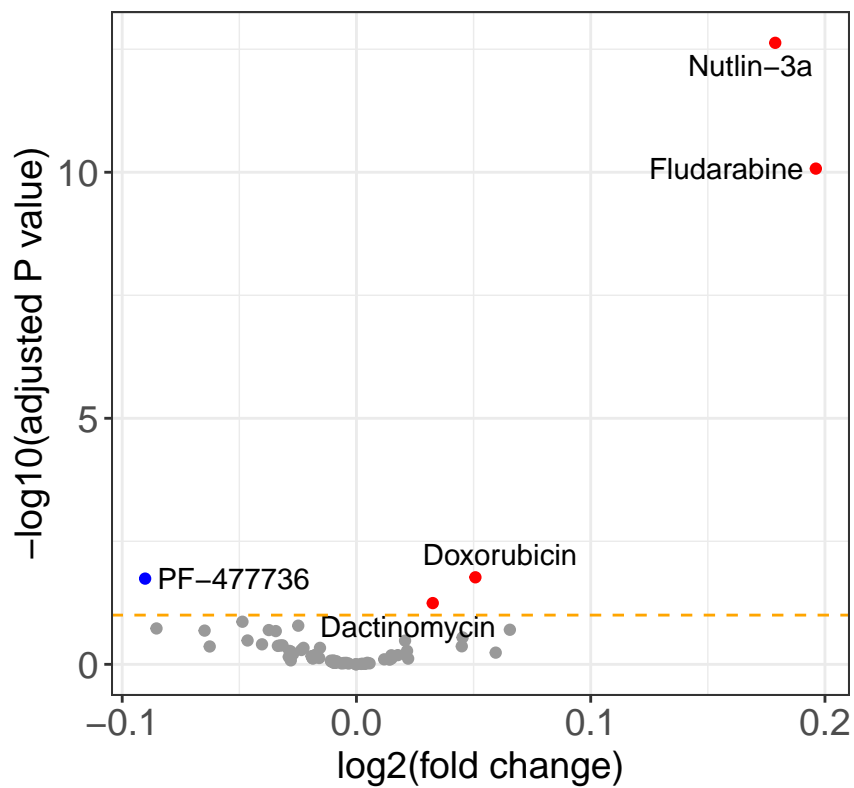
direction ● n.s. ● resistant ● sensitive

SF3B1 (mutated vs unmutated)



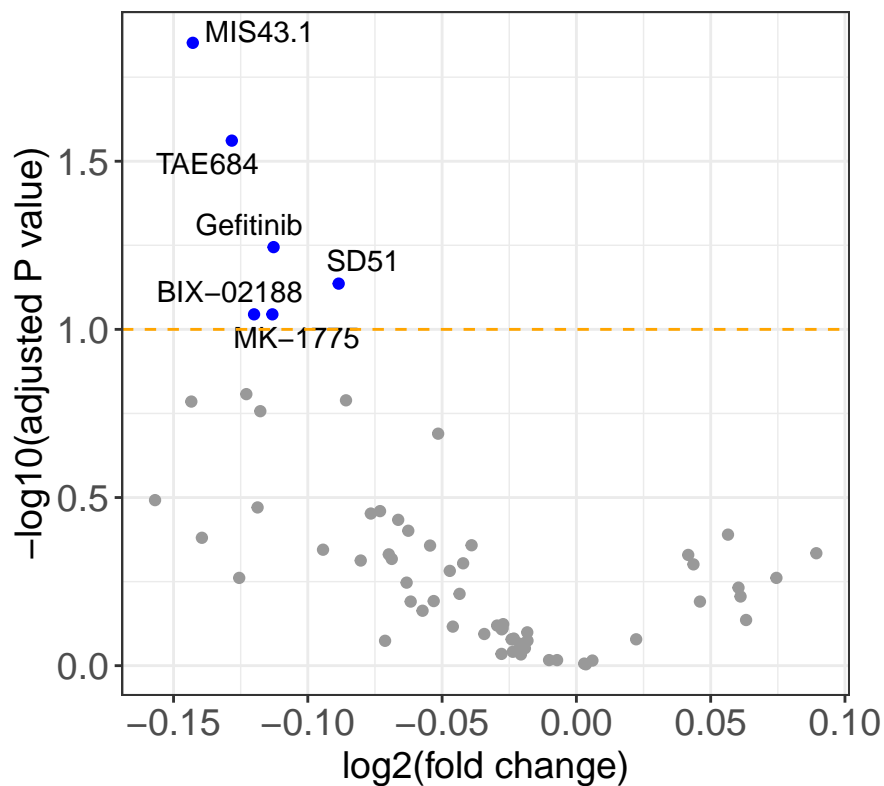
direction ● n.s. ● resistant ● sensitive

TP53 (mutated vs unmutated)



direction ● n.s. ● resistant ● sensitive

U1 (mutated vs unmutated)



direction ● n.s. ● resistant ● sensitive